

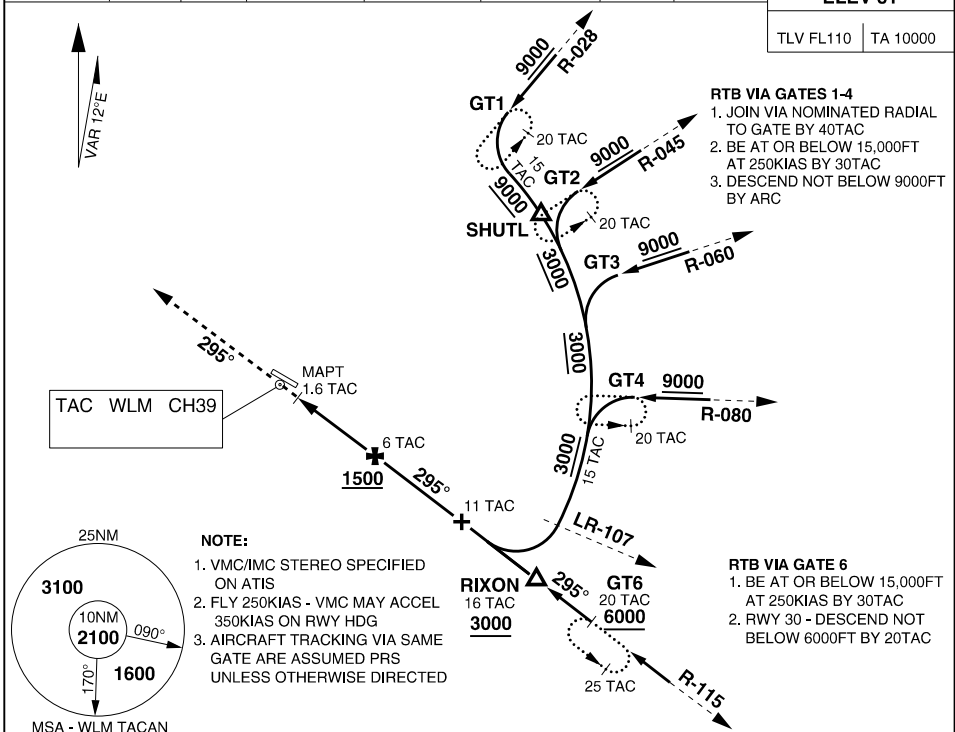
MILITARY USE ONLY

STEREO RWY 30
WILLIAMTOWN (YWLM)

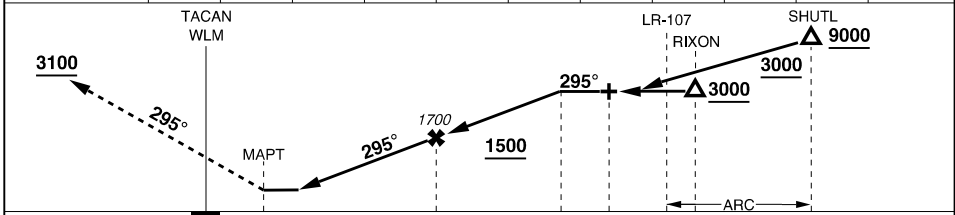
S32 47.70 E151 50.07
PANS-OPS, WGS 84

ATIS 134.45 365 316.1	ACD 130.35	SMC 121.8	TWR 118.3 280.9	WILLY APP HIGH 133.3 261.4	WILLY APP LOW 135.7 293.4	FIA (BN) 125.7	CTAF/AFRU/PAL 118.3	ELEVATIONS IN FEET AMSL BEARINGS ARE MAGNETIC
------------------------------------	----------------------	---------------------	---------------------------	--------------------------------------	-------------------------------------	--------------------------	-------------------------------	--

ELEV 31	
TLV FL110	TA 10000



WLM TACAN DIST	2.7	3	4	5	6	7	8	9	10	10.1	
ALTITUDE	650	750	1070	1380	1700	2020	2340	2660	2980	3000	



MISSED APPROACH: TRACK DIRECT TO TACAN THEN R-295. CLIMB TO 3100FT or AS DIRECTED BY ATC.

CATEGORY	C					D					
TACAN	650	634	-2600	(VIS -2000 WITH ACTUAL QNH)							
CIRCLING	810	779	-4000	1070	1039	-5000					

NOTE:

1. ACG USE ONLY - PROCEDURE NOT PANS-OPS 86/NATO SUPP/MOS 173 COMPLIANT
2. TERMINAL AUSTRALIA APPROACHES ARE AUTHORITATIVE PROCEDURES
3. STEREO PROCEDURE NOT VALIDATED BY AIS-AF

CHANGES: ARC HEIGHTS, APP FREQ, DIST/ALT TABLE, PROFILE DIAGRAM

30 NOV 23

ACG
MILITARY USE ONLY

WILLIAMTOWN (YWLM)
STEREO RWY 30