

MILITARY USE ONLY

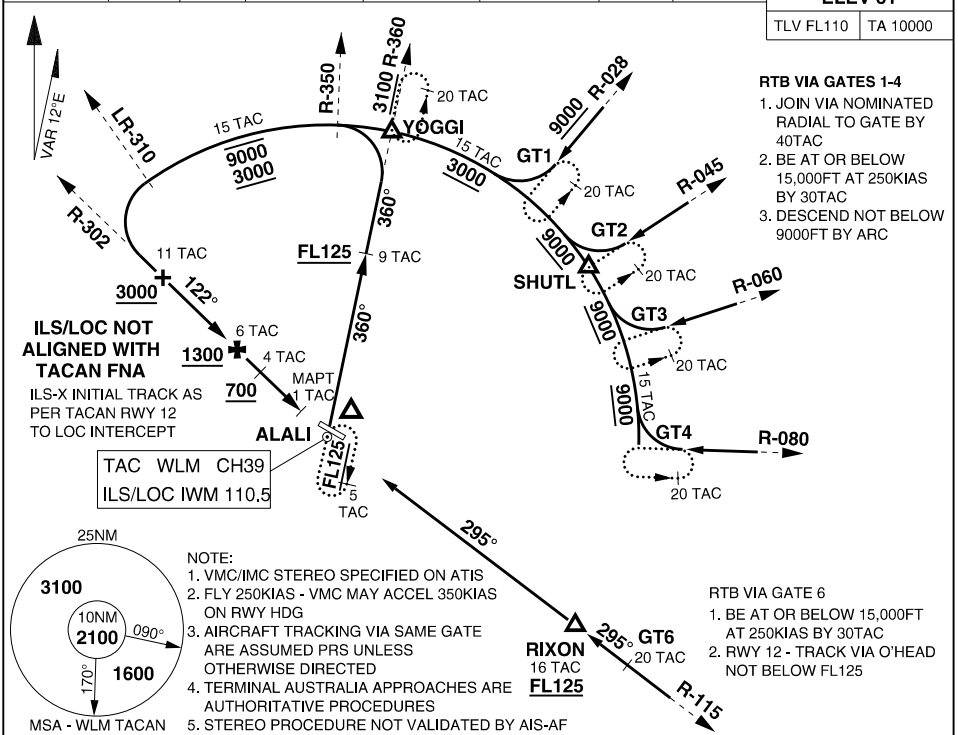
S32 47.70 E151 50.07  
PANS-OPS, WGS 84

STEREO RWY 12  
WILLIAMTOWN (YWLM)

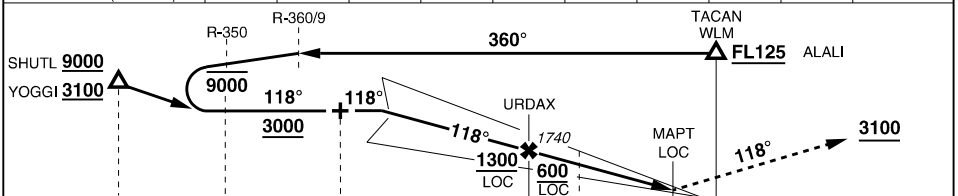
ATIS <b>134.45</b> 365 316.1	ACD <b>130.35</b>	SMC <b>121.8</b>	TWR <b>118.3 280.9</b>	WILLY APP HIGH <b>133.3 261.4</b>	WILLY APP LOW <b>135.7 293.4</b>	FIA (BN) <b>125.7</b>	CTAF/ AFRU/PAL <b>118.3</b>	ELEVATIONS IN FEET AMSL BEARINGS ARE MAGNETIC
------------------------------------	----------------------	---------------------	---------------------------	--------------------------------------	-------------------------------------	--------------------------	-----------------------------------	--

**ELEV 31**

TLV FL110 TA 10000



WLM TACAN DIST	10	9	8	7	6	5	4	3	2.3	
ALTITUDE (ILS/LOC)	3000	2690	2370	2050	1740	1420	1100	780	560	



TACAN WLM	15	ARC	15	11	6	3.5	1.2	0	THR 12 ELEV 29
-----------	----	-----	----	----	---	-----	-----	---	----------------

PROCEDURE	S-MINIMA	CIRCLING - CAT C	CIRCLING - CAT D	MISSED APPROACH
ILS-X RWY 12	<b>370</b> 341 -1200 (VIS -800 WITH ACTUAL QNH)	<b>810</b> 779 -4000	<b>1070</b> 1039 -5000	TRACK 118°, CLIMB TO <b>3100FT</b> or AS DIRECTED BY ATC
LOC-X RWY 12	<b>560</b> 529 -2000 (VIS -1500 WITH ACTUAL QNH)	<b>810</b> 779 -4000	<b>1070</b> 1039 -5000	
TACAN RWY 12	<b>640</b> 609 -2500 (VIS -1900 WITH ACTUAL QNH)	<b>810</b> 779 -4000	<b>1070</b> 1039 -5000	TRACK DCT TO TACAN THEN R-122, CLIMB TO <b>3100FT</b> or AS DIRECTED BY ATC

**NOTE:** 1. ACG USE ONLY - PROCEDURE NOT PANS-OPS 86/NATO SUPP/MOS173 COMPLIANT  
CHANGES: ARC HEIGHT, EDITORIAL, APP FREQ, DIST/ALT TABLE

**30 NOV 23**

ACG  
MILITARY USE ONLY

**WILLIAMTOWN (YWLM)**  
**STEREO RWY 12**