

TACAN WLM Chan 39	APCH CRS 295°	RWY LDG 10,033 THR ELEV 16 AD ELEV 31
----------------------	------------------	---

PANS-OPS, WGS-84

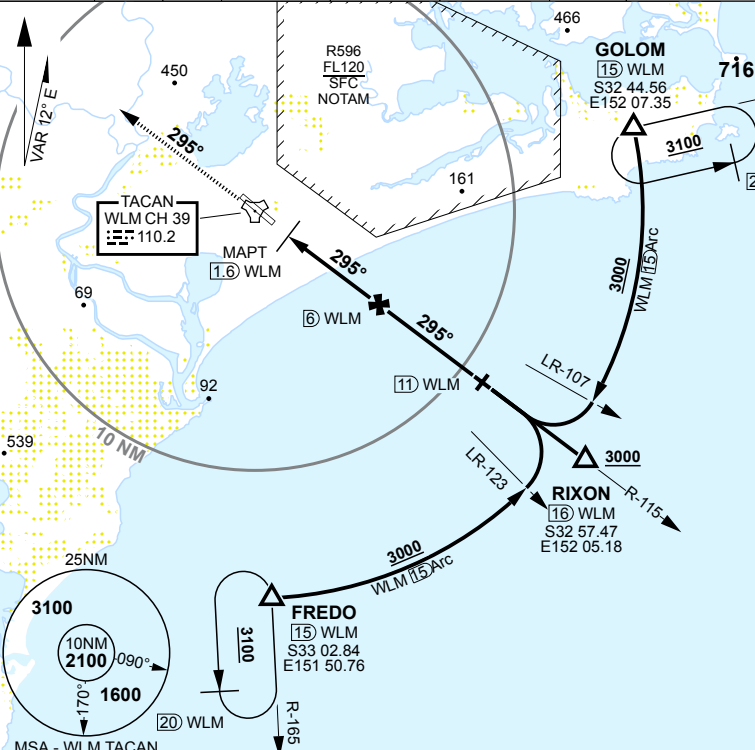
# TACAN RWY 30 WILLIAMTOWN (YWLM)

1. GLOM NOT AVBL WHEN R596 ACTIVE UNLESS APPROVED BY ATC.

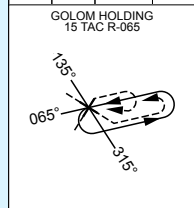


**MISSED APPROACH:**  
TRACK DIRECT TO TACAN THEN R-295. CLIMB TO 3100FT OR AS DIRECTED BY ATC.

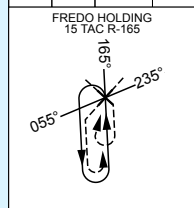
ATIS 134.45 316.1 365	ACD 130.35	SMC 121.8	TWR 118.3 280.9	WILLY APP HIGH 133.3 261.4	WILLY APP LOW 135.7 293.4	FIA (BN) 125.7	CTAF/AFRU/PAL 118.3	ELEVATIONS IN FEET AMSL BEARINGS ARE MAGNETIC
-----------------------------	---------------	--------------	--------------------	-------------------------------	------------------------------	-------------------	------------------------	--



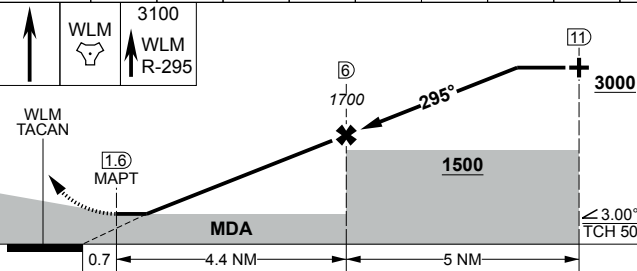
TRACK IN	TIME	MNM ALT	DME LIMIT
245°		3100	20



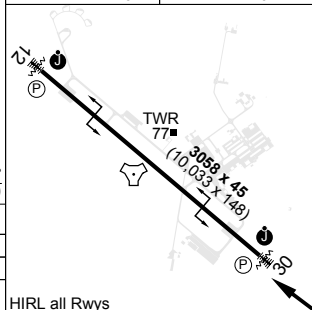
TRACK IN	TIME	MNM ALT	DME LIMIT
345°		3100	20



WLM TAC	2.7	3	4	5	6	7	8	9	10	10.1		
ALTITUDE	650	750	1070	1380	1700	2020	2340	2660	2980	3000		



TLV FL110	TA 10000
THR ELEV 16	TDZE 20



CATEGORY	A	B	C	D
S-30	650	634	2600m	(VIS -2000 WITH ACTUAL QNH)
CIRCLING	690 659 2000m	710 679 2400m	810 779 4000m	1070 1039 5000m

CHANGES: APP FREQ, ARC HEIGHTS

S32 47.70 E151 50.07

30 NOV 23

AIS-AF  
MILITARY USE ONLY

# WILLIAMTOWN (YWLM) TACAN RWY 30