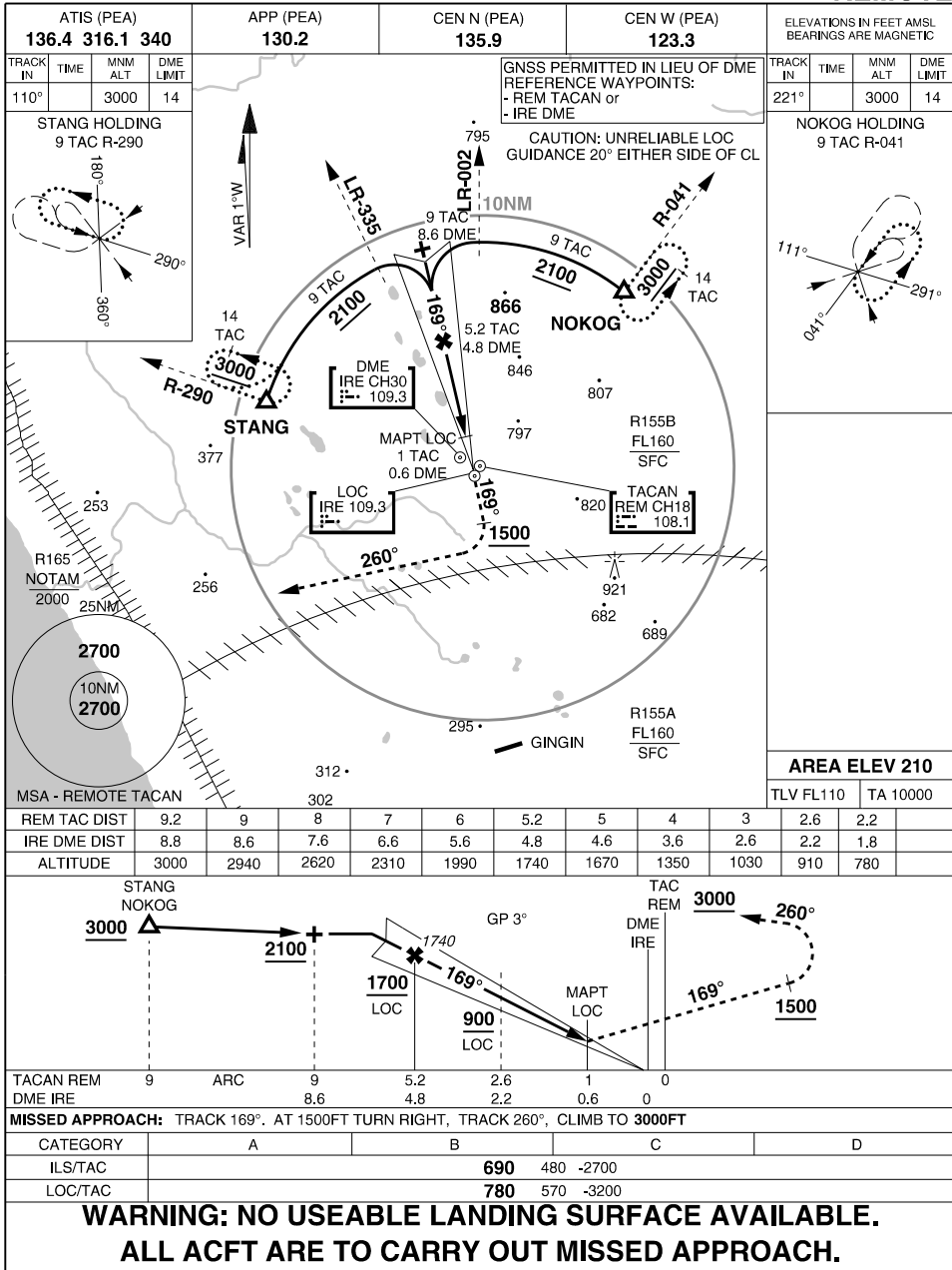


S31 16.41 E115 49.74  
PANS-OPS, WGS 84

**MILITARY USE ONLY**  
**ILS-I or LOC-I USING REM TACAN or IRE DME**  
**REMOTE**



CHANGES: REVISED PROCEDURE  
**17 APR 24**

**REMILITARY USE ONLY**  
**REMOTE**  
**ILS-I or LOC-I USING REM TACAN or IRE DME**