

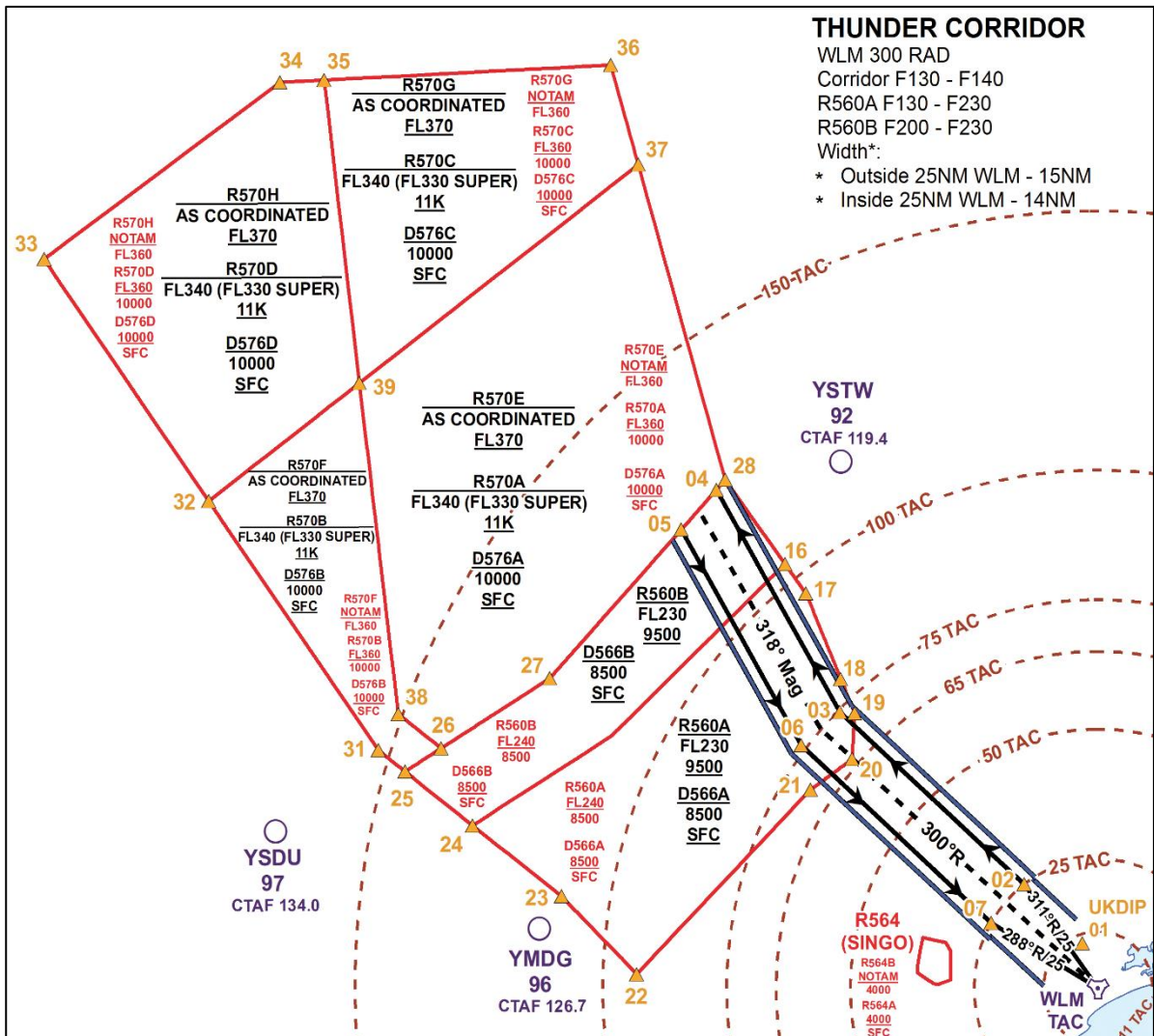
# YWLM AMD 02/24

## 1 Purpose

The purpose of this amendment is to replace the diagram located within section 4.3 of WLM AD2 SUPP Issue 2406. Figure 11 contains inaccurate 'Highest Usable' altitudes and was published in error.

## 2 Amendment details

The highest usable altitude operating within R560 should read FL230, below is the corrected diagram:



### **3 Cancellation**

This amendment will be cancelled when incorporated into WLM FIHA AD2 SUPP.

Approved:

SQNLDR William Todd

T/CO 453SQN