

YPEA AMD 03/24

1 Training Approaches using the RWY 18L ILS

1.1 Purpose

The RWY 18L Instrument Landing System (ILS) NAVAID model ILS3500 has been replaced by the model ILS7000 system. Due to certification timelines, the new ILS Instrument Approach Procedures (IAP) for the ILS7000 system are experiencing longer than expected delays. The ILS3500 IAP have been withdrawn by NOTAM YPEA C281/24. To maximise training throughput the ILS7000 system is radiating and will be used with the old ILS3500 ILS-Y or LOC-Y 18L IAP at pilot discretion. 'VISUAL' will be appended to clearance for this IAP.

This IAP is only applicable to locally briefed aircraft.

1.2 Procedures

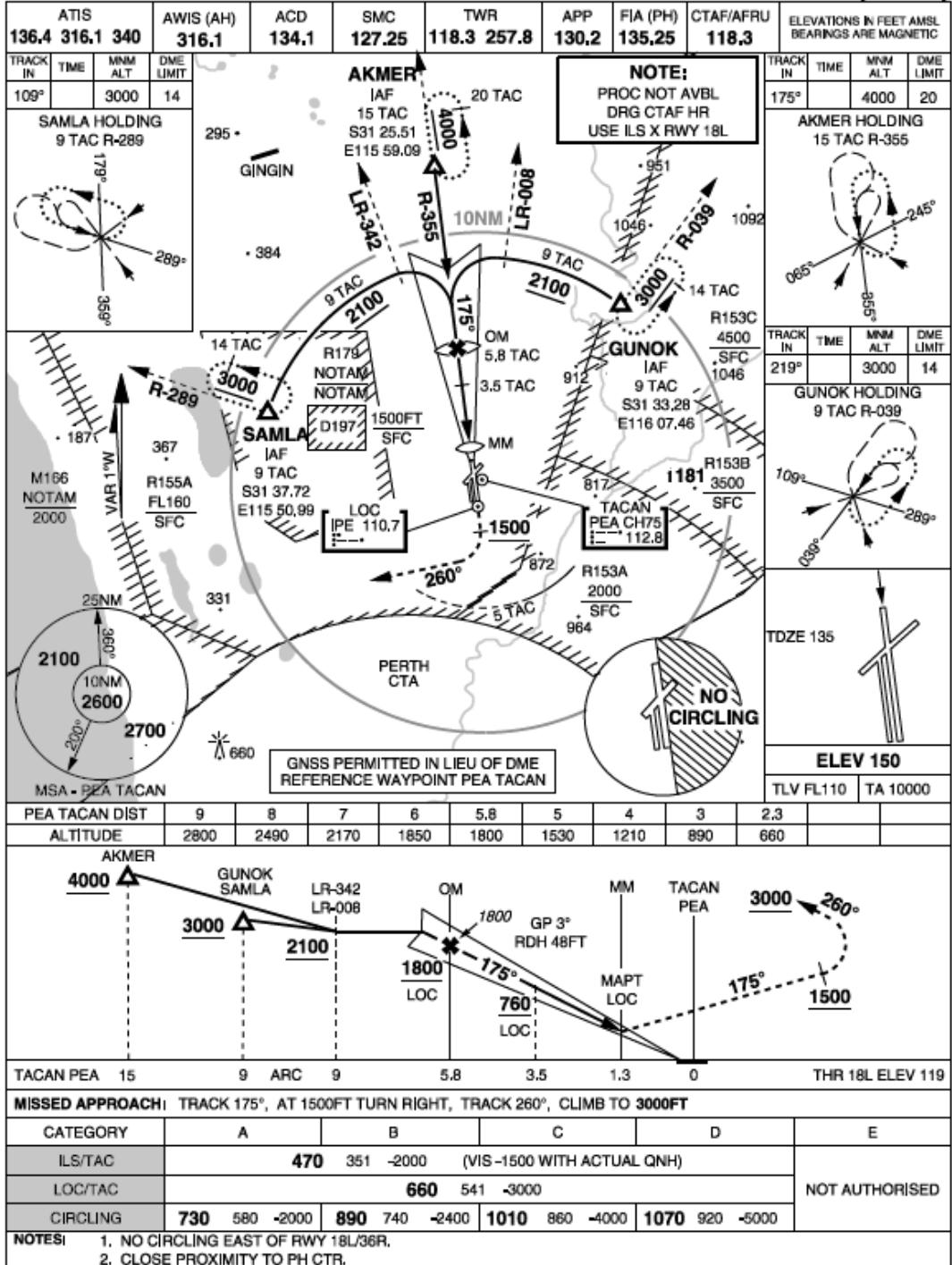
The following IAP is to be utilised:

S31 40,06 E116 00,90
PANS-OPS, WGS 84

ILS-Y or LOC-Y RWY 18L VISUAL

MILITARY USE ONLY

PEARCE (YPEA)



ILS-Y or LOC-Y RWY 18L VISUAL

1.3 Expiry

This amendment is effective until the issue of new ILS-Y or LOC-Y RWY 18L plates.

Approved:

T/CO 453SQN