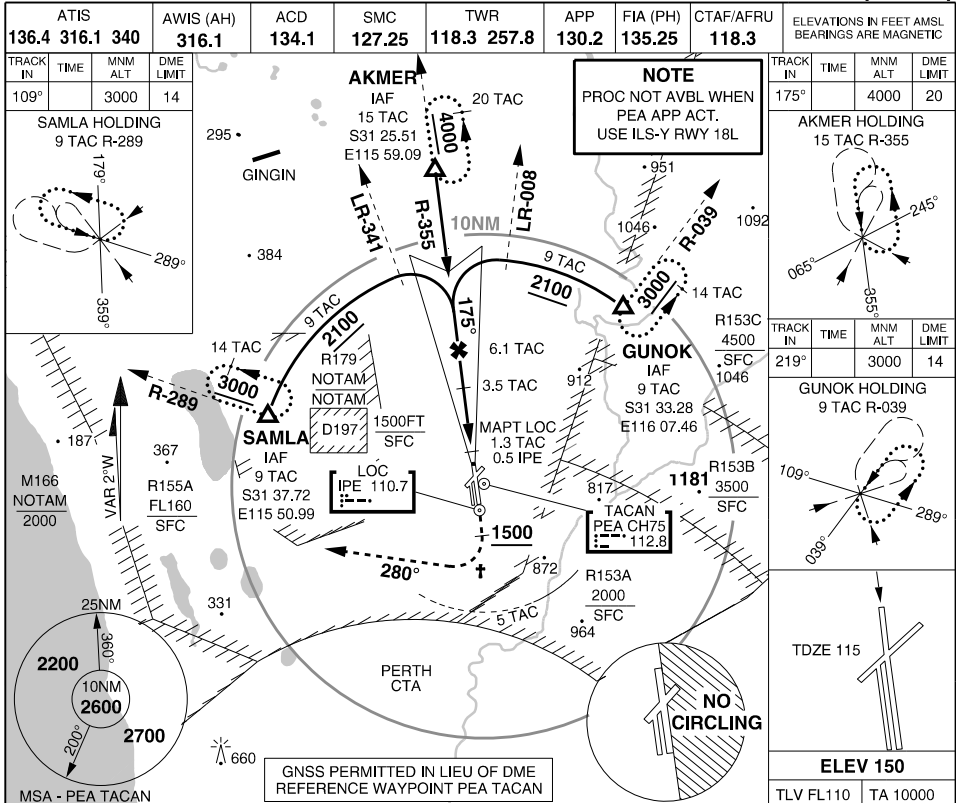


S31 40.06 E116 00.90
PANS-OPS, WGS 84

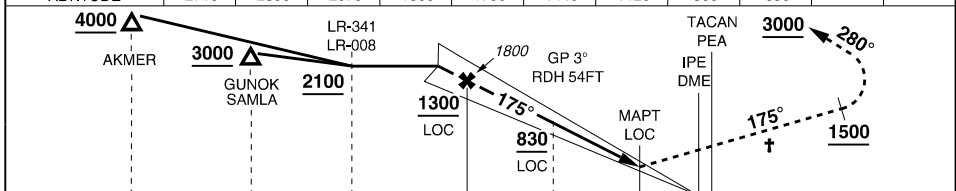
ILS-X or LOC-X RWY 18L (UNCONTROLLED HR ONLY)

PEARCE (YPEA)

MILITARY USE ONLY



IPE DME	8.2	7.2	6.2	5.3	5.2	4.2	3.2	2.2	1.7	
PEA TACAN DIST	9	8	7	6.1	6	5	4	3	2.5	
ALTITUDE	2710	2390	2070	1800	1750	1440	1120	800	650	



IPE DME	14.2	9	8.2	5.3	2.7	0.5	0			THR 18L ELEV 115
TACAN PEA	15	9	ARC	9	6.1	3.5	1.3	0		

MISSD APPROACH: † TRACK 175°, AT 1500FT TURN RIGHT, TRACK 280°, CONTINUE CLIMB TO 3000FT

CATEGORY	A	B	C	D	E
ILS/TAC	420	305	-1600	(VIS -1500 WITH ACTUAL QNH)	NOT AUTHORISED
LOC/TAC	690	575	-3000	(VIS -2400 WITH ACTUAL QNH)	
CIRCLING	730	580	-2000	880 730 -2400 980 830 -4000 1090 940 -5000	

- NOTES:**
1. NO CIRCLING EAST OF RWY 18L/36R
 - † 2. MISSED APCH PROC REQUIRES PH ATC CLEARANCE

11 FEB 25 **PEARCE (YPEA)**
MILITARY USE ONLY
ILS-X or LOC-X RWY 18L (UNCONTROLLED HR ONLY)