

YWLM AMD 04/25

1 Purpose

This amendment introduces trial procedures for 81WG and 82WG Part A Compliant departures and arrivals to/from the Thunder Corridor, and 81WG and 82WG Part A Compliant departures on flight planned routes north of YWLM.

2 Procedures

Thunder Corridor/Northern Planned Route Departures

The following procedures apply:

- [SYGNA ONE DEPARTURE RWY 12](#) (WSTN/NORTHERN FPR) (Annex A)
- [IBADI ONE DEPARTURE RWY 12](#) (NORTHERN FPR) (Annex B)

Note: CLASSIC ONE SID remains the primary SID for all RWY 30 departures, and departures to OWTR GFTA Gates from RWY 12.

Thunder Corridor Arrivals

The following procedures apply:

- [IPMED ONE VICTOR ARRIVAL RWY 12](#) (VMC Recovery) (Annex C)
- [IPMED ONE ALPHA ARRIVAL RWY 12](#) (IMC Recovery) (Annex D)
- [UKDIP ONE ALPHA ARRIVAL RWY 12](#) (Overhead Recovery) (Annex E)
- [HEXAM ONE VICTOR ARRIVAL RWY 30](#) (VMC Recovery) (Annex F)
- [HEXAM ONE ALPHA ARRIVAL RWY 30](#) (IMC Recovery) (Annex G)
- [HEXAM ONE TANGO ARRIVAL RWY 30](#) (IMC Recovery) (Annex H)

3 Military departures

Tracking	RWY12	RWY30	RWY12 SAWR Low	RWY30 SAWR Low	RWY12 SAWR High	RWY30 SAWR High
G1 - G2	PEPPER	PEPPER	PEPPER	PEPPER	PEPPER	PEPPER
G3- G7	CLASSIC	CLASSIC	CLASSIC*	PEPPER	CLASSIC*	Radar/VSD
G9-11	Radar/VSD	Radar/VSD	Radar/VSD	Radar/VSD	Radar/VSD	Radar/VSD
WSTN	SYGNA 1*	CLASSIC	SYGNA 1*	CLASSIC	SYGNA 1*	CLASSIC
* ACFT departing RWY12 for Gates 3-7 will avoid SAWR on the CLASSIC SID track						
* ACFT departing on CLASSIC 1 departure will be issued a direction of turn in the take-off clearance						
* SYGNA 1 Departures for WSTN Airspace is for 81WG and 82WG Only						

4 RT guide

<p>Aircraft recovering via Storm 2 can expect the following</p>	<p>Pilot WILLY (agency) (Callsign) Example: WILLY APPROACH, HPST</p> <p>ATC (Callsign) WILLY (agency) IDENTIFIED Example: HPST, WILLY APPROACH IDENTIFIED</p> <p>PILOT (Callsign) VISUAL, LAND (#) RECEIVED ATIS Example: HPST, VISUAL, LAND 2 RECEIVED INFORMATION ALPHA</p> <p>ATC (Callsign) CLEARED STORM 2 STAR (Thunder Corridor Arrivals) Example: HPST, CLEARED STORM 2, IPMED ONE ALPHA ARRIVAL RUNWAY 12, NOT BELOW FLIGHT LEVEL 130</p> <p>PILOT (Callsign) CLEARED STORM 2 STAR (Thunder Corridor Arrivals) Example: CLEARED STORM 2, IMPED ONE ALPHA ARRIVAL RUNWAY 12, NOT BELOW FLIGHT LEVEL 130, HPST</p> <p>ATC (Callsign) [at or prior to STORM Gate] DESCEND VIA STAR to (level) Example: HPST, DESCEND VIA STAR TO 3100</p> <p>PILOT (Callsign) DESCEND VIA STAR to (level) Example: DESCEND VIA STAR TO 3100, HPST</p> <p>ATC (Callsign) CLEARED (Approach) , [position] CONTACT TWR Example: HPST, CLEARED ILS ZULU APPROACH RUNWAY 12, AT 10 MILES CONTACT TOWER STUD 3</p>
---	--

5 ACG Acceptance

ACG has formally accepted the risk associated with the locally developed SIDs and STARs.

All SIDs are integrated with the [WILLY FOUR DEPARTURE \(RADAR\)](#). All STARs remain above WLM 25 NM MSA and terminate via an Instrument or Visual Approach procedure. Endorsement and acceptance from 81WG and 82WG per the following link: [BP53798234](#).

6 Cancellation

This amendment will be cancelled upon completion of the trial and the procedures will be incorporated into FIHA AD2 Supplement YWLM.

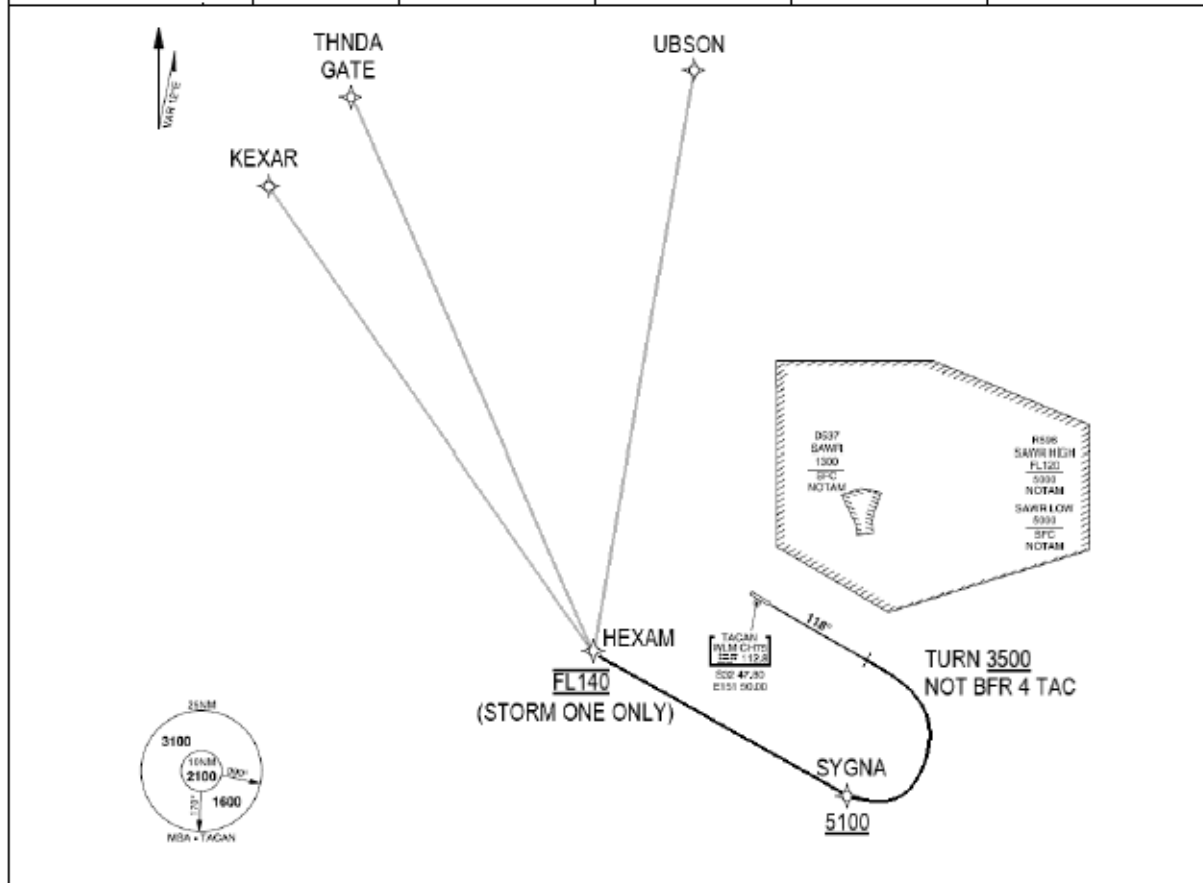
Approved:

WGCDR Damien Fairhurst CO 453SQN

81/82WG USE ONLY

**SYGNA ONE DEPARTURE
WILLIAMTOWN (YWLM)**

ATIS	ACD	SMC	TWR	APP HIGH	APP LOW
134.45 365 316.2	130.35	121.8	118.3 280.9	133.3 261.4	135.7 293.4



RWY 12

- GRAD 3.3% (IAW WILLY FOUR DEPARTURE)
 - Track 118°
 - At or above 3500FT, but not before 4 TAC
 - Track DCT WPT SYGNA
 - Cross SYGNA at or above 5100FT
 - Track DCT WPT HEXAM
 - Cross HEXAM at FL140 (For STORM ONE ONLY)
 - Thence as cleared
- Note: Maintain trail until passing HEXAM

Notes: NOISE ABATEMENT APPLIES

Changes: Nil

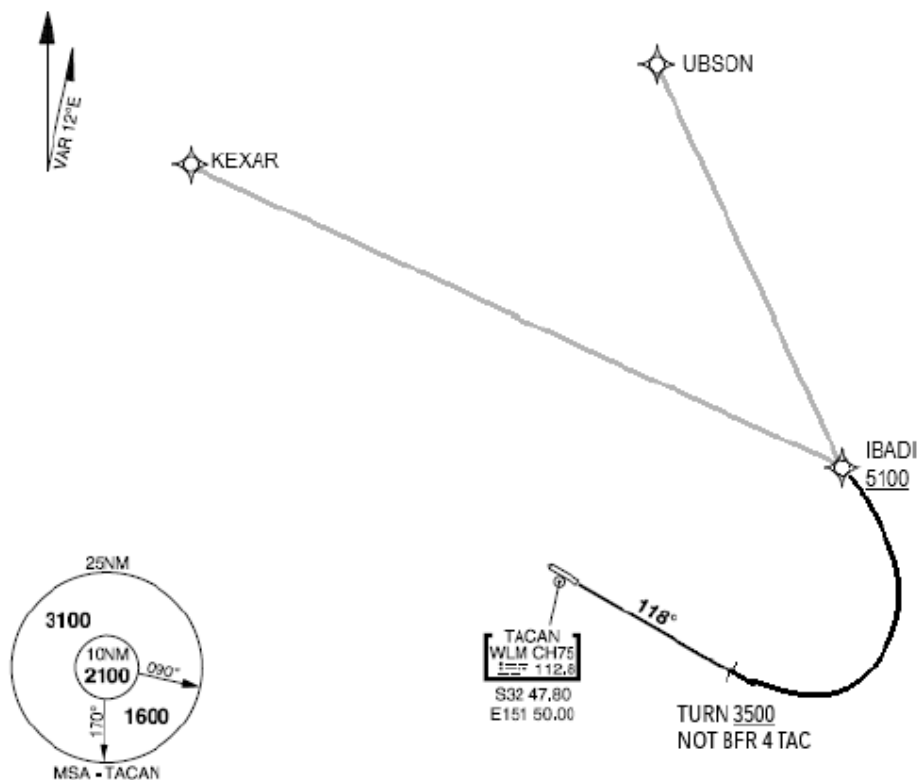
27 NOV 25

**WILLIAMTOWN (YWLM)
SYGNA ONE DEPARTURE**

81/82WG USE ONLY

IBADI ONE DEPARTURE RWY 12
WILLIAMTOWN (YWLM)

ATIS	ACD	SMC	TWR	APP HIGH	APP LOW
134.45 365 316.2	130.35	121.8	118.3 280.9	133.3 261.4	135.7 293.4



RWY 12

- GRAD 3.3% (IAW WILLY FOUR DEPARTURE)
- Track 118°
- At or above 3500FT, but not before 4 TAC
- Track DCT IBADI
- Cross IBADI at or above 5100FT
- Thence as cleared
- Note: Maintain trail until passing IBADI

Notes: NOISE ABATEMENT APPLIES

Changes: Nil

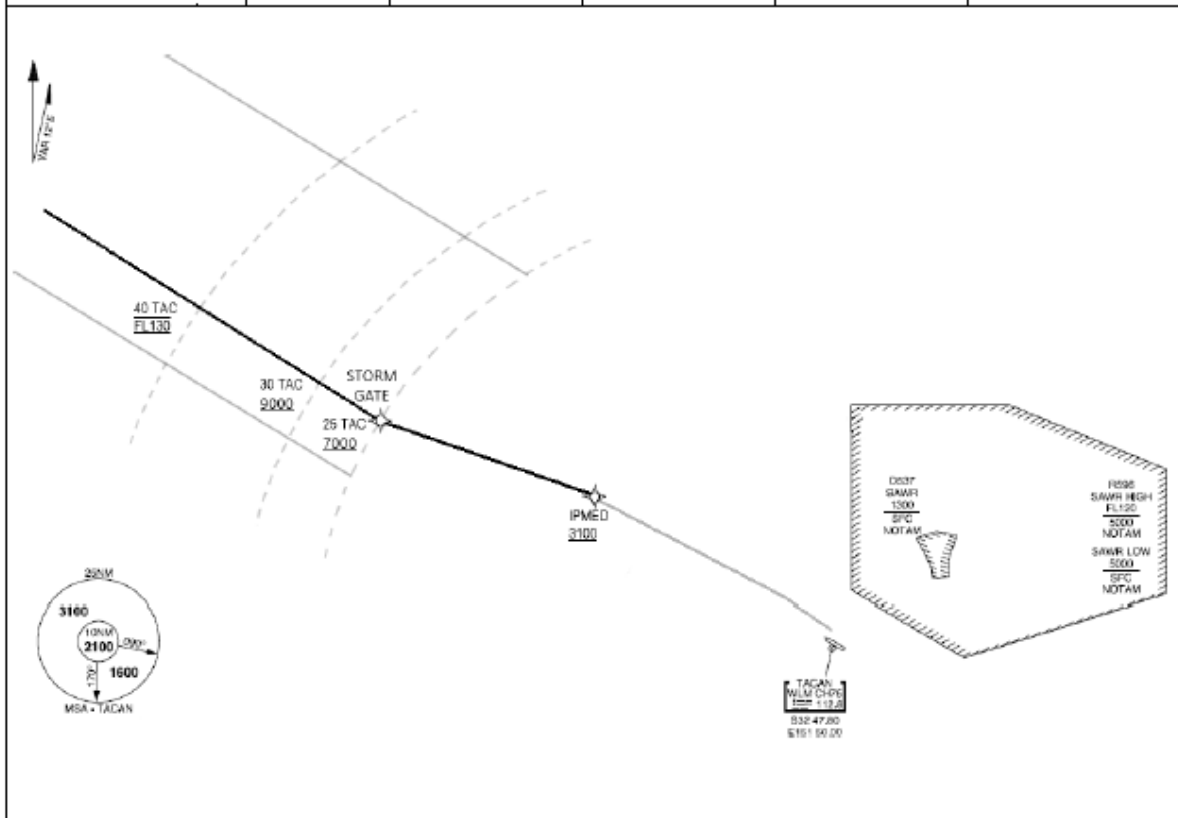
27 NOV 25

WILLIAMTOWN (YWLM)
IBADI ONE DEPARTURE RWY 12

81/82WG USE ONLY

**IPMED ONE VICTOR ARRIVAL RWY 12
WILLIAMTOWN (YWLM)**

ATIS	ACD	SMC	TWR	APP HIGH	APP LOW
134.45 365 316.2	130.35	121.8	118.3 280.9	133.3 261.4	135.7 293.4



RWY 12

- Track via STORM TWO
Cross 40 TAC AT FL130
Cross 30 TAC AT or ABV 9000FT
Cross 25 TAC AT or ABV 7000FT
- FROM STORM Gate track to IPMED
Cross IPMED AT or ABV 3100FT
- FROM IPMED track to Straight Initial RWY 12 for VISUAL procedure

Notes: Expect descent within 40 TAC, pending availability from BN Centre

Changes: Nil

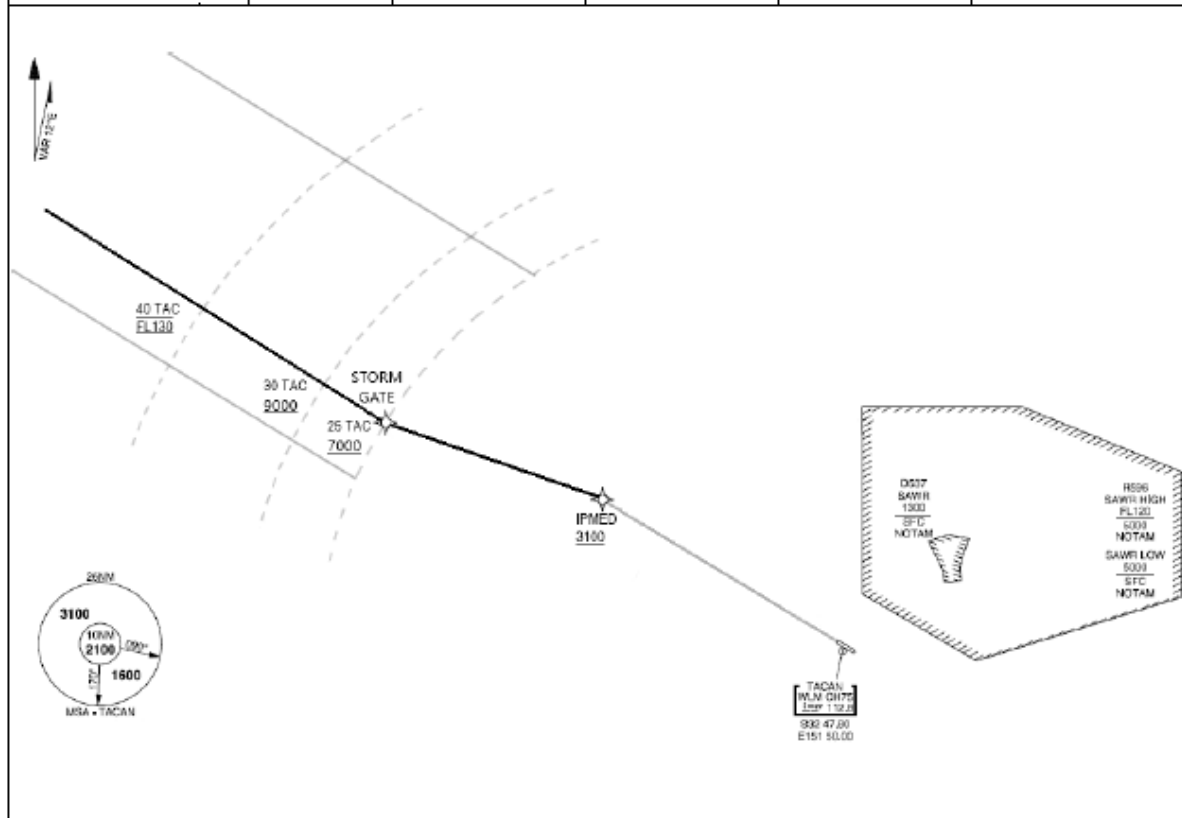
27 NOV 25

**WILLIAMTOWN (YWLM)
IPMED ONE VICTOR ARRIVAL RWY 12**

81/82WG USE ONLY

IPMED ONE ALPHA ARRIVAL RWY 12
WILLIAMTOWN (YWLM)

ATIS	ACD	SMC	TWR	APP HIGH	APP LOW
134.45 365 316.2	130.35	121.8	118.3 280.9	133.3 261.4	135.7 293.4



RWY 12

- Track via STORM TWO
Cross 40 TAC AT FL130
Cross 30 TAC AT or ABV 9000ft
Cross 25 TAC AT or ABV 7000ft
- FROM STORM Gate track to IPMED
Cross IPMED AT or ABV 3100ft
- FROM IPMED track via ILS-Z RWY 12

Notes: Expect descent within 40 TAC, pending availability from BN Centre

Changes: Nil

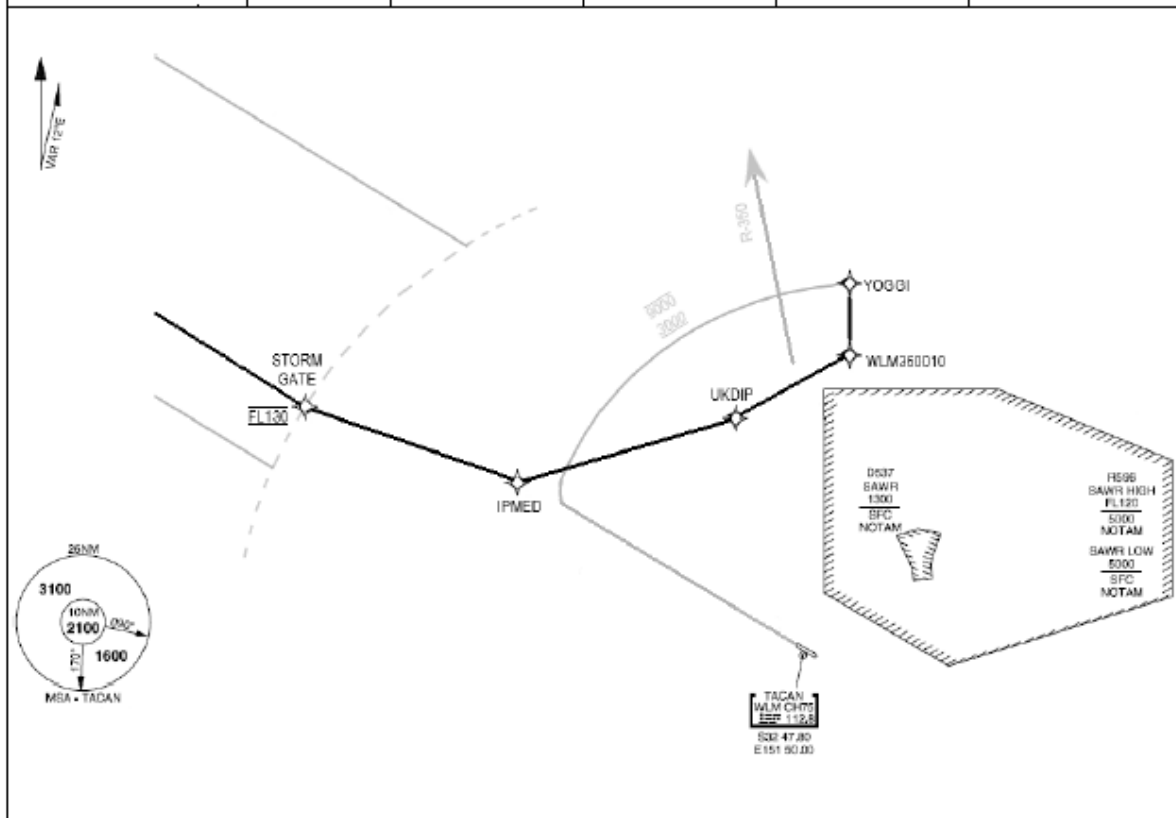
27 NOV 25

WILLIAMTOWN (YWLM)
IPMED ONE ALPHA ARRIVAL RWY 12

81/82WG USE ONLY

**UKDIP ONE ALPHA ARRIVAL RWY 12
WILLIAMTOWN (YWLM)**

ATIS	ACD	SMC	TWR	APP HIGH	APP LOW
134.45 365 316.2	130.35	121.8	118.3 280.9	133.3 261.4	135.7 293.4



RWY 12

- Track via STORM TWO
Cross STORM Gate AT FL130
 - FROM STORM Gate track IPMED
 - FROM IPMED track UKDIP
 - FROM UKDIP track WLM360010
 - FROM WLM360010 track to YOGGI
 - FROM YOGGI track via ILS-X RWY 12 or TACAN RWY 12
- Note: After passing YOGGI, pilot request for ARA RWY 12 will be authorised if requested

Notes:

Changes: Nil

27 NOV 25

**WILLIAMTOWN (YWLM)
UKDIP ONE ALPHA ARRIVAL RWY 12**

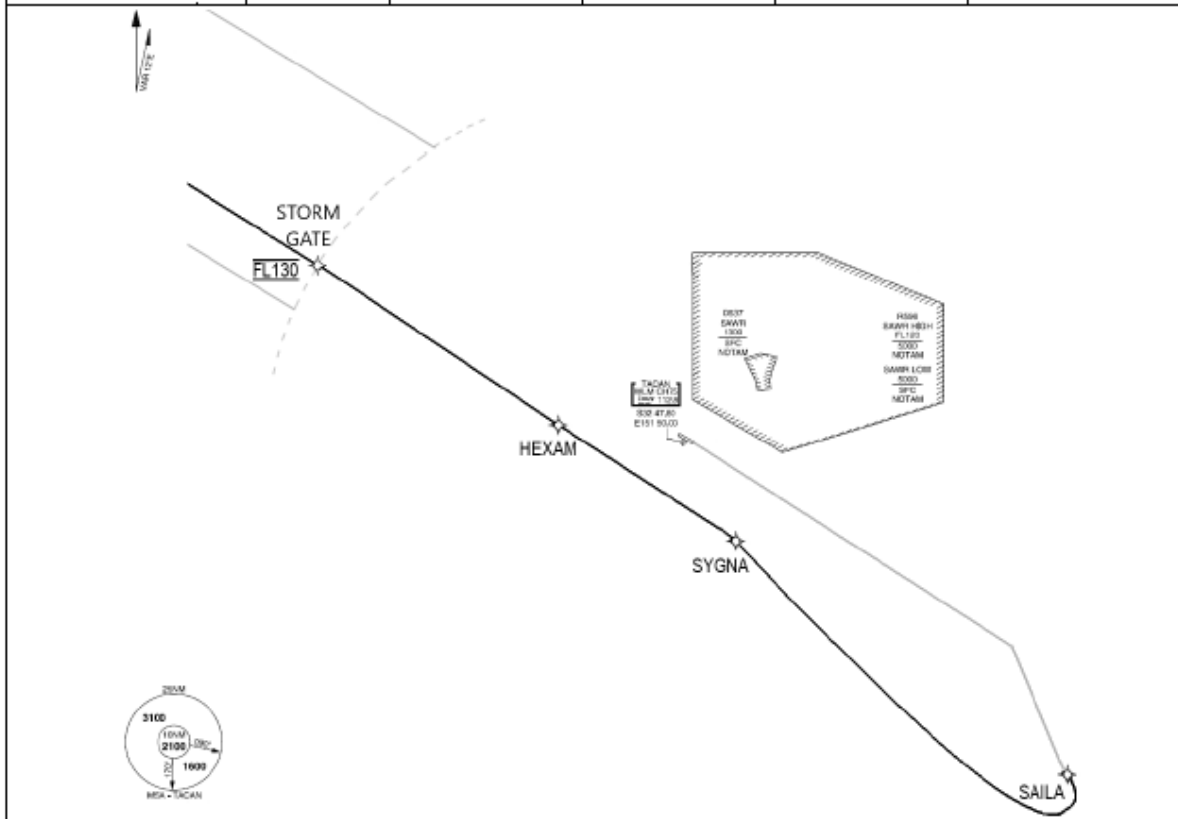
ONLY
HEXAM ONE VICTOR ARRIVAL RWY 30
WILLIAMTOWN (YWLM)

WILLIAMTOWN (YWLM)
HEXAM ONE VICTOR ARRIVAL RWY 30

81/82WG USE ONLY

HEXAM ONE ALPHA ARRIVAL RWY 30
WILLIAMTOWN (YWLM)

ATIS	ACD	SMC	TWR	APP HIGH	APP LOW
134.45 365 316.2	130.35	121.8	118.3 280.9	133.3 261.4	135.7 293.4



RWY 30

- Track via STORM TWO
Cross STORM Gate AT FL130
- FROM STORM Gate track HEXAM
- FROM HEXAM track SYGNA
- FROM SYGNA pilot position for SAILA (Remain south of the SYGNA/SAILA track)
- FROM SAILA track via ARA RWY 30

Notes:

Changes: Nil

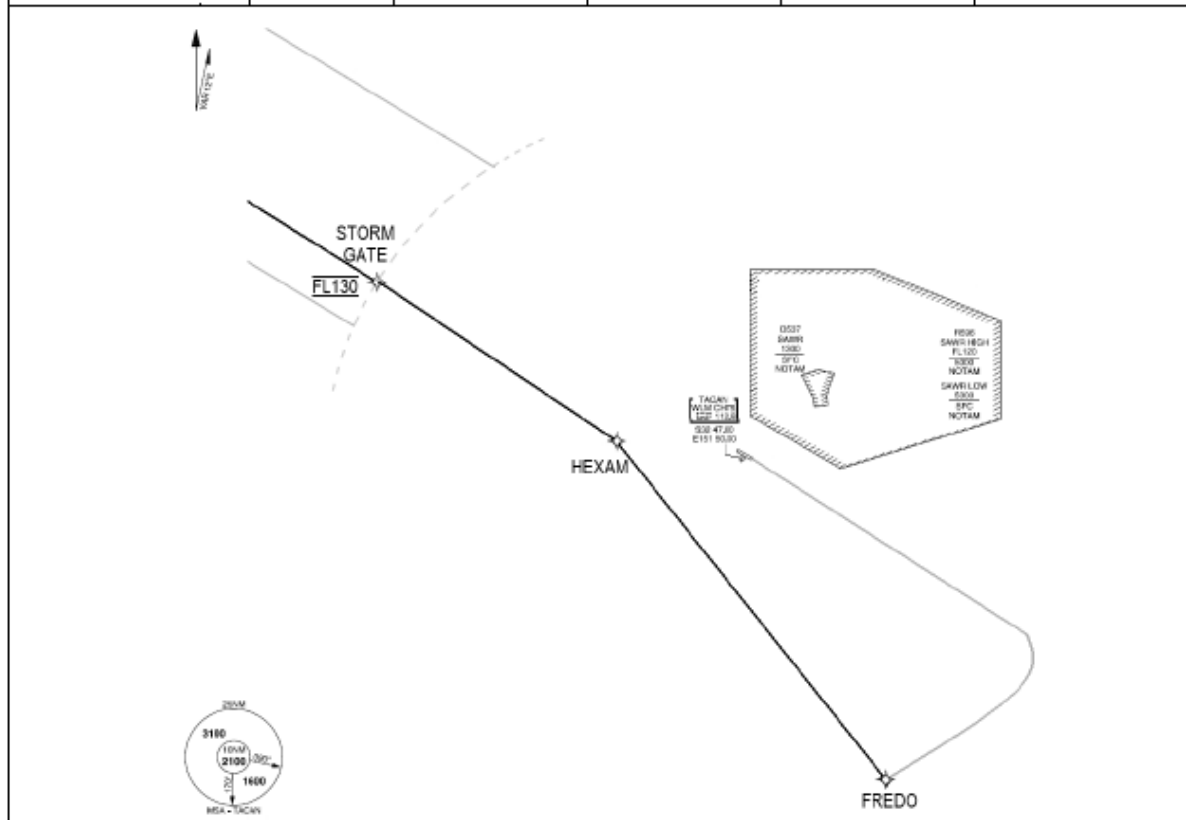
27 NOV 25

WILLIAMTOWN (YWLM)
HEXAM ONE ALPHA ARRIVAL RWY 30

81/82WG USE ONLY

HEXAM ONE TANGO ARRIVAL RWY 30
WILLIAMTOWN (YWLM)

ATIS	ACD	SMC	TWR	APP HIGH	APP LOW
134.45 365 316.2	130.35	121.8	118.3 280.9	133.3 261.4	135.7 293.4



RWY 30

- Track via STORM TWO
 Cross STORM Gate AT FL130
- FROM STORM Gate track HEXAM
- FROM HEXAM track FREDO
- FROM FREDO track via TACAN RWY 30

Notes:

Changes: Nil

27 NOV 25

WILLIAMTOWN (YWLM)
HEXAM ONE TANGO ARRIVAL RWY 30