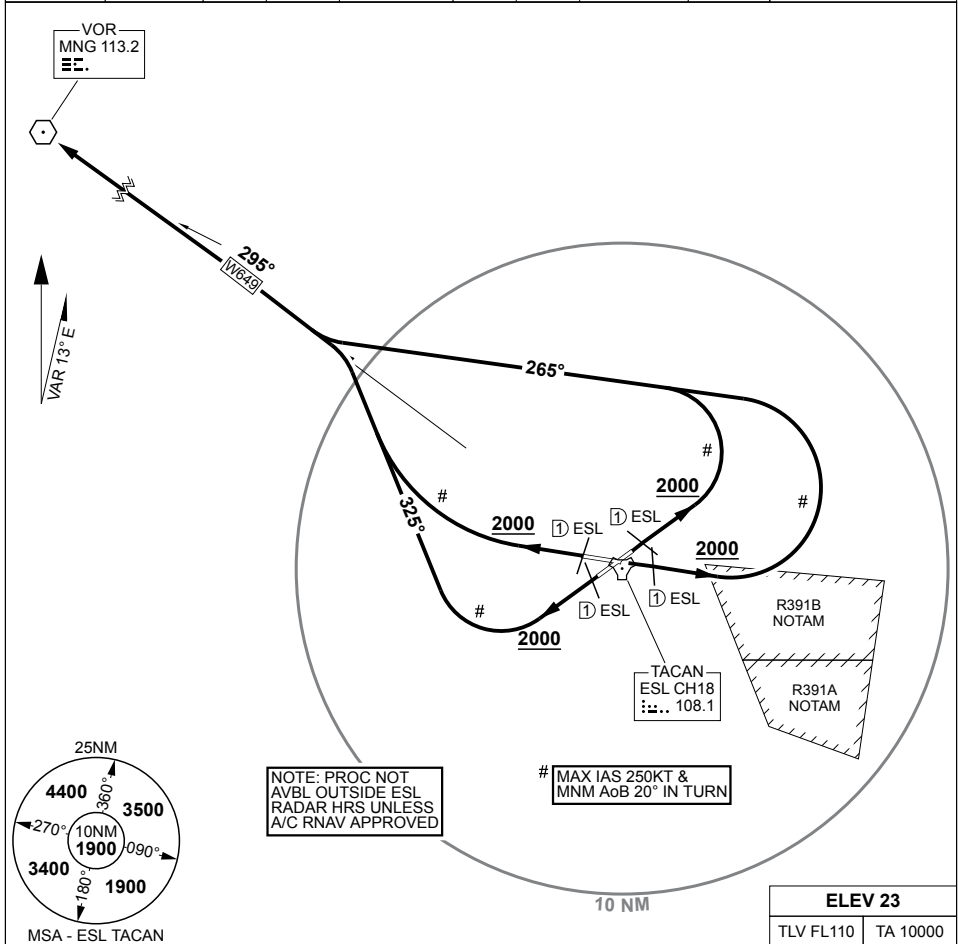


SID MANGALORE (MNG) THREE ALL RWYS EAST SALE (YMES)

PANS-OPS, WGS 84

MILITARY USE ONLY

ATIS 125.4 350	AWIS (AH) 125.4	ACD 133.6 134.1	SMC 127.25	TWR 118.3 257.8	APP 123.3 340.2	ACC 135.8	CTAF/AFRU 118.3	FIA (ML) 124.0	ELEVATIONS IN FEET AMSL BEARINGS ARE MAGNETIC
-------------------	--------------------	-----------------------	---------------	--------------------	-----------------------	--------------	--------------------	-------------------	--



DEPARTURE ROUTE DESCRIPTION

MANGALORE (MNG) THREE DEPARTURE:

RWY 04, GRAD 3.3%, TRACK 041°, AT OR ABV 2000FT, BUT NOT BEFORE 1 TAC UPWIND, TURN LEFT, TRACK 265° TO INTCP OUTBOUND TRACK

RWY 09, GRAD 3.3%, TRACK 086°, AT OR ABV 2000FT, BUT NOT BEFORE 1 TAC UPWIND, TURN LEFT, TRACK 265° TO INTCP OUTBOUND TRACK

RWY 22, GRAD 3.6%, TRACK 221°, AT OR ABV 2000FT, BUT NOT BEFORE 1 TAC UPWIND, TURN RIGHT, TRACK 325° TO INTCP OUTBOUND TRACK

RWY 27, GRAD 3.3%, TRACK 266°, AT OR ABV 2000FT, BUT NOT BEFORE 1 TAC UPWIND, TURN RIGHT TO INTCP OUTBOUND TRACK

CHANGES: CHART NAME AND FORMAT

S38 05.94 E147 08.97

02 DEC 21

AIS-AF: MILITARY USE ONLY

EAST SALE (YMES)

SID MANGALORE (MNG) THREE ALL RWYS