

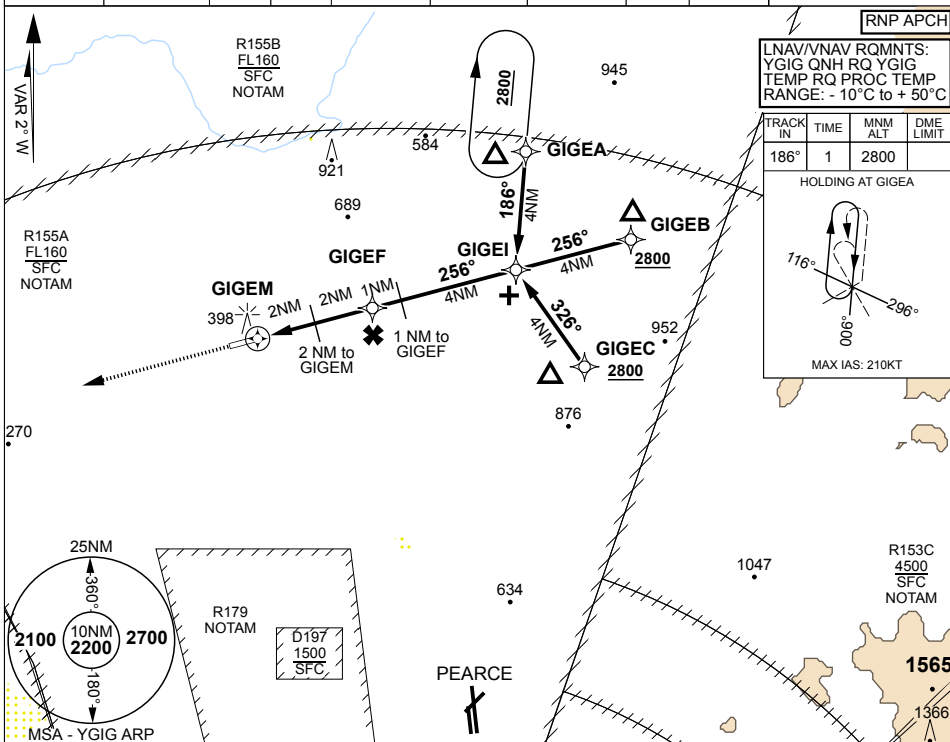
PANS-OPS, WGS-84

RNP RWY 26
GINGIN (YGIG)

1. MAX IAS INITIAL: 210KT.

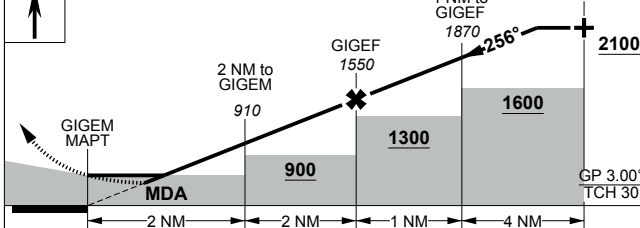
MISSED APPROACH:
TRACK 256°, CLIMB TO 3000FT.

ATIS (PEA) 136.4 316.1 340	AWIS (PEA) 316.1	SMC 267.0	TWR 118.5	ACD (PEA) 134.1	APP (PEA) 130.2	ACC (PEA) 135.9	CTAF/ AFRU 118.5	FIA (PH) 135.25	ELEVATIONS IN FEET AMSL BEARINGS ARE MAGNETIC
--	----------------------------	---------------------	---------------------	---------------------------	---------------------------	---------------------------	-------------------------------	---------------------------	--

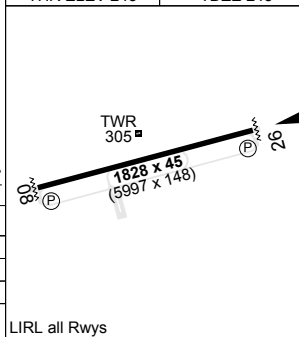


NM TO NEXT WPT	GIGEM	1	1.5	2	3	GIGEF	1	2	3	3.9			
ALTITUDE		580	760	910	1230	1550	1870	2180	2500	2800			

3000 ↑	1 NM to GIGEI	TLV FL110	TA 10000
		THR ELEV 243	TDZE 245



CATEGORY	A	B	C	D
LNAV/VNAV DA	580	333	1900m	
LNAV MDA	760	513	3000m	(VIS -2400 WITH ACTUAL QNH)
CIRCLING	990	743	2400m	1140 893 4000m 1340 1093 5000m



CHANGES: MAG VAR. EDITORIAL

S31 27.91 E115 51.80

20 MAR 25

**AIS-AF
MILITARY USE ONLY**

GINGIN (YGIG)
RNP RWY 26