

TACAN ESL Chan 18	APCH CRS 211°	RWY LDG THR ELEV AD ELEV	7995 14 23
----------------------	------------------	--------------------------------	------------------

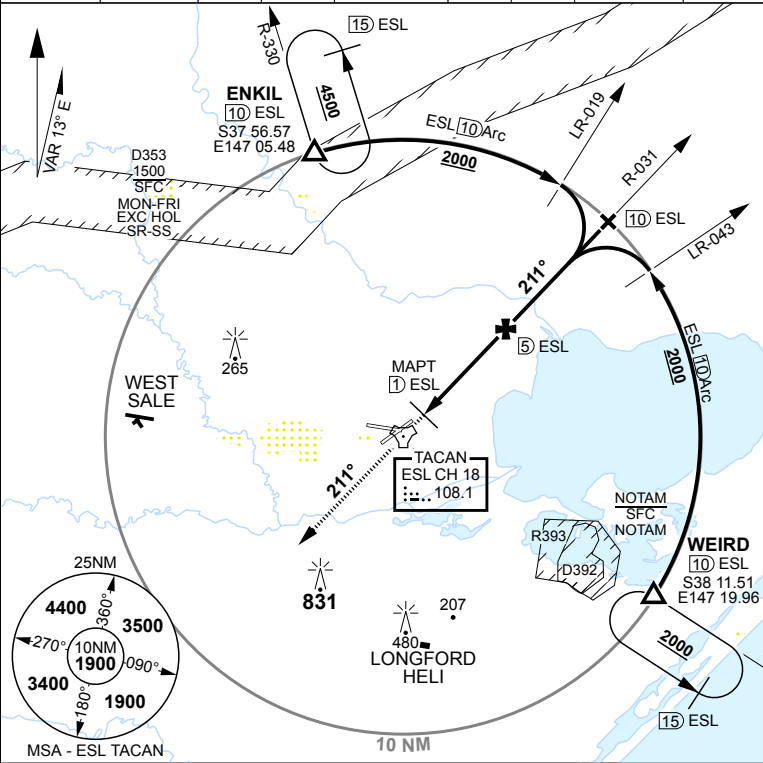
PANS-OPS, WGS-84

TACAN RWY 22
EAST SALE (YMES)

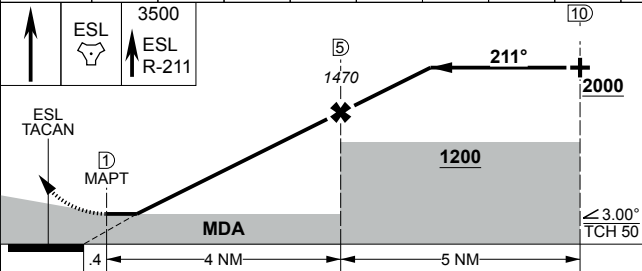
MISSED APPROACH:
TRACK 211°, CLIMB TO 3500FT OR AS DIRECTED BY ATC.

ATIS 125.4 350	AWIS (AH) 125.4	ACD 133.6 134.1	SMC 127.25	TWR 118.3 257.8	APP 123.3 340.2	ACC 135.8	CTAF/AFRU 118.3	FIA (ML) 124.0
-------------------	--------------------	-----------------------	---------------	--------------------	-----------------------	--------------	--------------------	-------------------

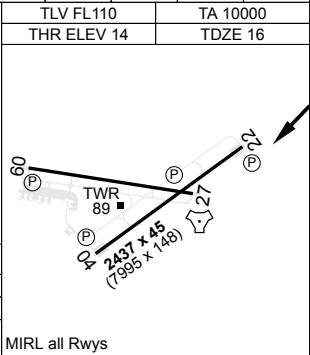
ELEVATIONS IN FEET AMSL BEARINGS ARE MAGNETIC			
TRACK IN	TIME	MNM ALT	DME LIMIT
150°		4500	15
ENKIL HOLDING 10 TAC R-330			
TRACK IN	TIME	MNM ALT	DME LIMIT
290°		2000	15
WEIRD HOLDING 10 TAC R-110			



ESL TAC	2.1	3	4	5	6	6.7													
ALTITUDE	550	830	1150	1470	1790	2000													



CATEGORY	A	B	C	D
S-22	550 536	3000m	(VIS -2400 WITH ACTUAL QNH)	
CIRCLING	630 607	2400m	830 807 4000m	1030 1007 5000m



CHANGES: CIRCLING S38 05.94 E147 08.97

04 SEP 25

AIS-AF
MILITARY USE ONLY

EAST SALE (YMES)
TACAN RWY 22