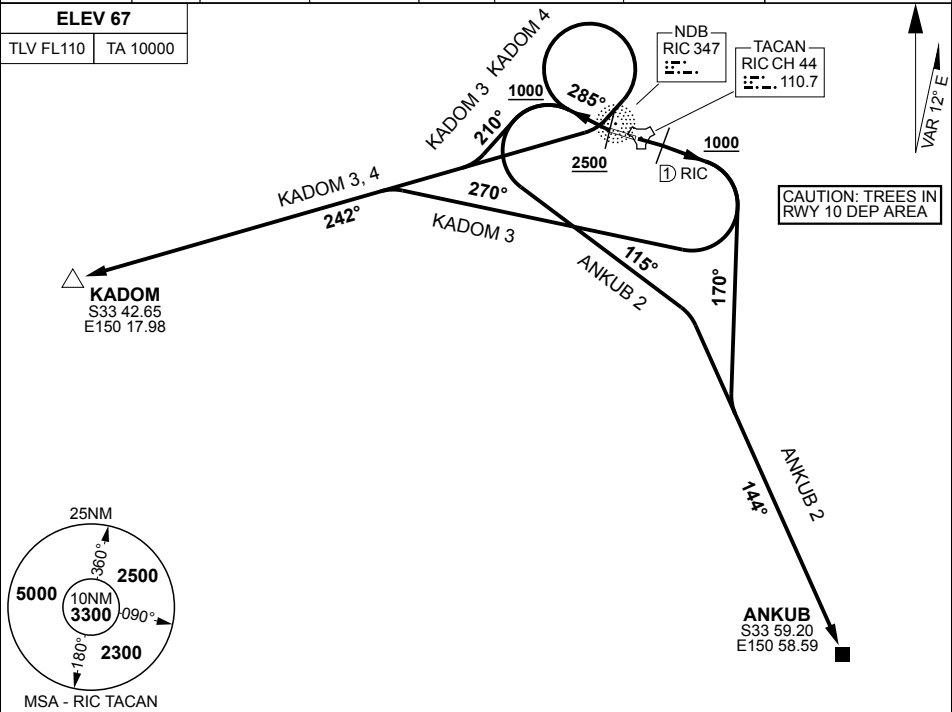


PANS-OPS, WGS 84

SID RWYS SOUTH
RICHMOND (YSRI)

ATIS/AWIS (AH)	SMC	TWR	APP (SY)	FIA (SY)	AFRU/PAL (AH)	CTAF/AFRU (AH)	ELEVATIONS IN FEET AMSL BEARINGS ARE MAGNETIC
126.3 274.55	128.25	135.5 257.3	135.9 363.8	124.55	135.5	135.5	

ELEV 67	
TLV FL110	TA 10000



ANKUB TWO

RWY 10

GRAD 3.3%, TRACK 095°, AT 1 TAC OR 1000FT, WHICHEVER IS LATER, TURN RIGHT, TRACK 170°, INTERCEPT 144° FROM RIC NDB, TRACK TO ANKUB THEN AS CLEARED

RWY 28

GRAD 4.9% UNTIL 2600FT THEN 3.3%, AT DER TURN RIGHT, TRACK 285°, AT 1000FT, TURN LEFT, TRACK 115°, INTERCEPT 144° FROM RIC NDB, TRACK TO ANKUB THEN AS CLEARED

KADOM THREE

RWY 10

GRAD 3.3%, TRACK 095°, AT 1 TAC OR 1000FT, WHICHEVER IS LATER, TURN RIGHT, TRACK 270°, INTERCEPT 242° FROM RIC NDB, TRACK TO KADOM THEN AS CLEARED

RWY 28

GRAD 4.9% UNTIL 2600FT THEN 3.3%, AT DER TURN RIGHT, TRACK 285°, AT 1000FT, TURN LEFT, TRACK 210°, INTERCEPT 242° FROM RIC NDB, TRACK TO KADOM THEN AS CLEARED

KADOM FOUR

RWY 28

GRAD 4.9% UNTIL 2600FT THEN 3.3%, AT DER TURN RIGHT, TRACK 285°, AT 1000FT, TURN RIGHT, TRACK 210°, INTERCEPT 242° FROM RIC NDB, TRACK TO KADOM THEN AS CLEARED. **REQUIREMENT:** REACH 2500FT BY OVERHEAD OR ABEAM RIC

CHANGES: AFRU/PAL (AH)

S33 36.04 E150 46.84

28 NOV 24

AIS-AF
MILITARY USE ONLY

RICHMOND (YSRI)
SID RWYS SOUTH