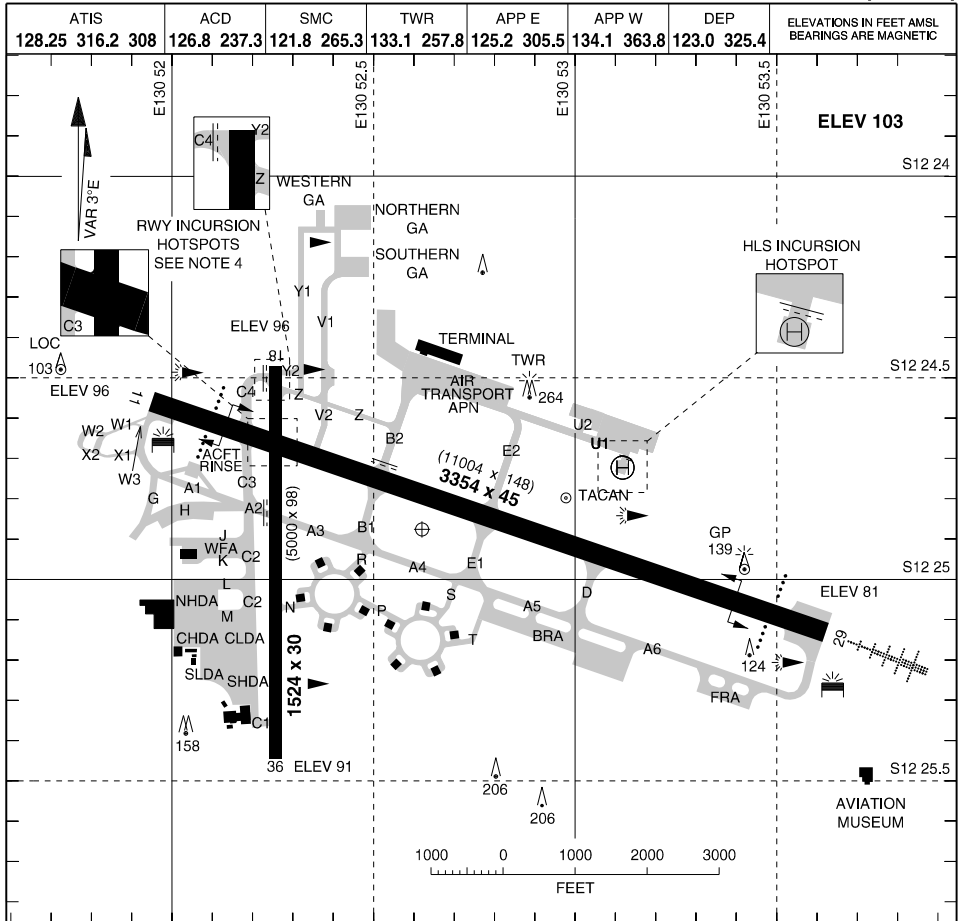


MILITARY USE ONLY

S12 24.88 E130 52.61  
PANS-OPS, WGS 84

# AERODROME CHART DARWIN INTL (YPDN)



## LIGHTING

RWY	APPROACH	THR	RUNWAY
<b>11</b> (106°)	PAPI 3.00° 65FT	GREEN	HIRL (6)
<b>29</b> (286°)	HIAL (6) PAPI 3.00° 60FT	GREEN	
<b>18</b> (177°)	NIL	NIL	NIL
<b>36</b> (357°)			

OBSTRUCTION  
ILLUMINATED WIND INDICATOR  
TWY: CL GREEN  
AIR TRANSPORT APN: TWY BLUE EDGE LGT S OF BAYS 2, 3 AND 21, 22  
TWYS C4, V2, Y & Z (WEST OF V) ARE UNLIT  
NORTHERN HELIPAD: ILLUMINATED BY WHITE LIGHTS  
NORTHERN HELIPAD TWY: GREEN CL LIGHTS

## NOTES

- RWY LIGHTS POSITIONED 3FT FROM EDGE.
- LDA FOR LAHSO:  
FM THR RWY 29 TO RWS EDGE 18 / 36 - 2687M  
FM THR RWY 36 TO RWS EDGE 11 / 29 - 1146M.
- CIRCLING TO RWY 11 / 29 NOT APPROVED UNLESS  
RWY LIGHTS ARE AT STAGE 2 OR HIGHER
- CAUTION: RWY INCURSION HOTSPOTS:  
RWY 18 / 36 AND TWY C4  
INTERSECTION OF RWY 11 / 29 AND 18 / 36  
ACFT MUST NOT VACATE/ENTER ONTO THE  
CROSSING RWY WITHOUT ATC APPROVAL.
- ROBERTSON BARRACKS (YRBK) CTAF 126.6, H24

CHANGES: RWY 11/29 MEHT

**04 SEP 25**

AIS-AF  
MILITARY USE ONLY

**DARWIN INTL (YPDN)**  
AERODROME CHART