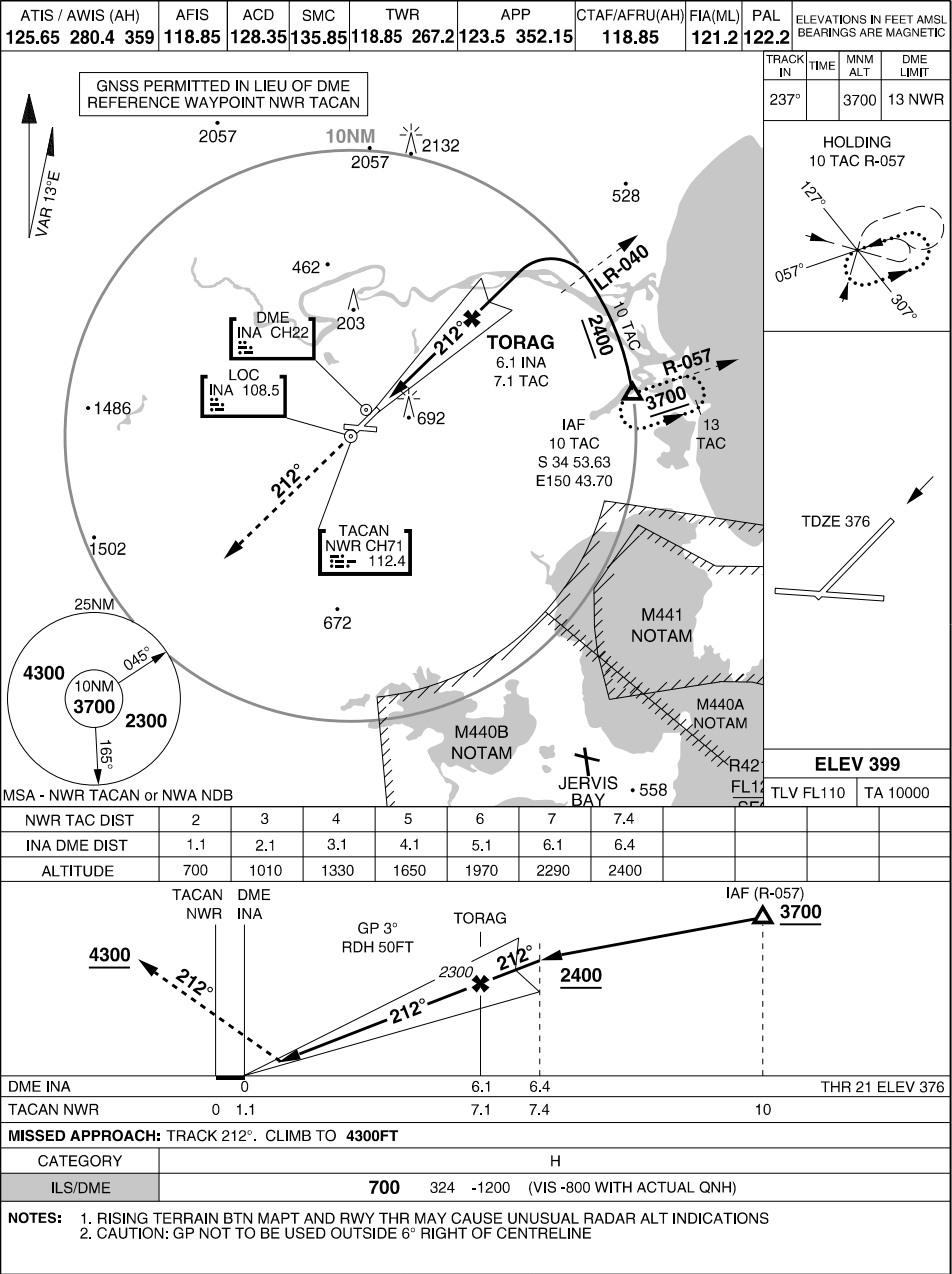


S34 56.94 E150 32.22
PANS-OPS, WGS 84

ILS-W RWY 21 USING NWR TACAN or INA DME (CAT H)
NOWRA (YSNW)



CHANGES: AMENDED PROCEDURE

12 JUN 25

AIS-AF
MILITARY USE ONLY

NOWRA (YSNW)
ILS-W RWY 21 USING NWR TACAN or INA DME (CAT H)