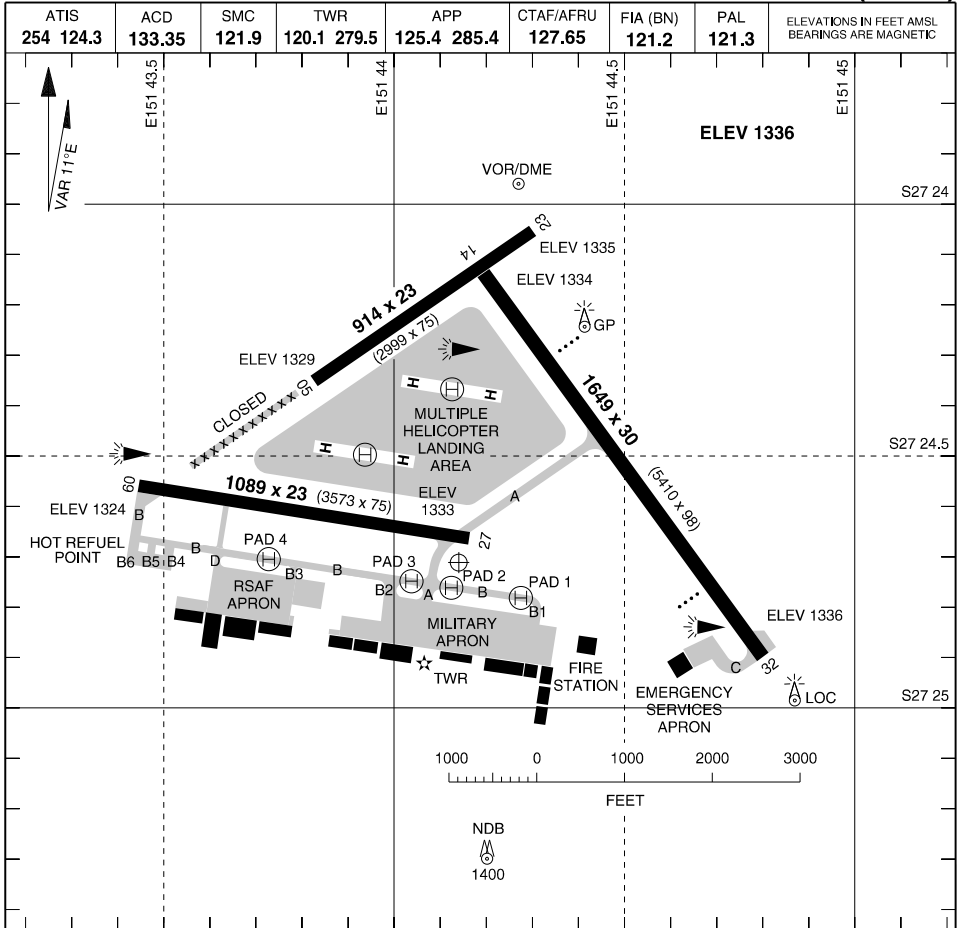


MILITARY USE ONLY

# AERODROME CHART OAKEY (YBOK)

S27 24.69 E151 44.12  
PANS-OPS, WGS 84



## LIGHTING

RWY	APPROACH	THR	RUNWAY
<b>14</b> (135°)	PAPI (6) (LEFT SIDE) 3.00° 48FT	GREEN	REDL MIRL (3)
<b>32</b> (315°)		GREEN	
<b>05</b> (044°)	NIL	NIL	NIL
<b>23</b> (224°)	NIL	NIL	
<b>09</b> (089°)	NIL	GREEN	REDL MIRL (3)
<b>27</b> (269°)	NIL	GREEN	
SDBY PWR AVBL			

ILLUMINATED WIND INDICATORS  
TAXIWAY: SIDELINE BLUE AND CENTRELINE GREEN  
OBSTRUCTION  
PAL 121.3

## NOTES

1. RWY 23, 27 AND 32 - RIGHT CIRCUIT
2. RWY 09/27 NOT AVBL TO ACFT ABOVE 22700KG.
3. MULTIPLE HEL OPS AIRFIELD CENTRE.

CHANGES: ABN REINSTATED

**05 SEP 24**

AIS-AF

MILITARY USE ONLY

**OAKEY (YBOK)**  
AERODROME CHART