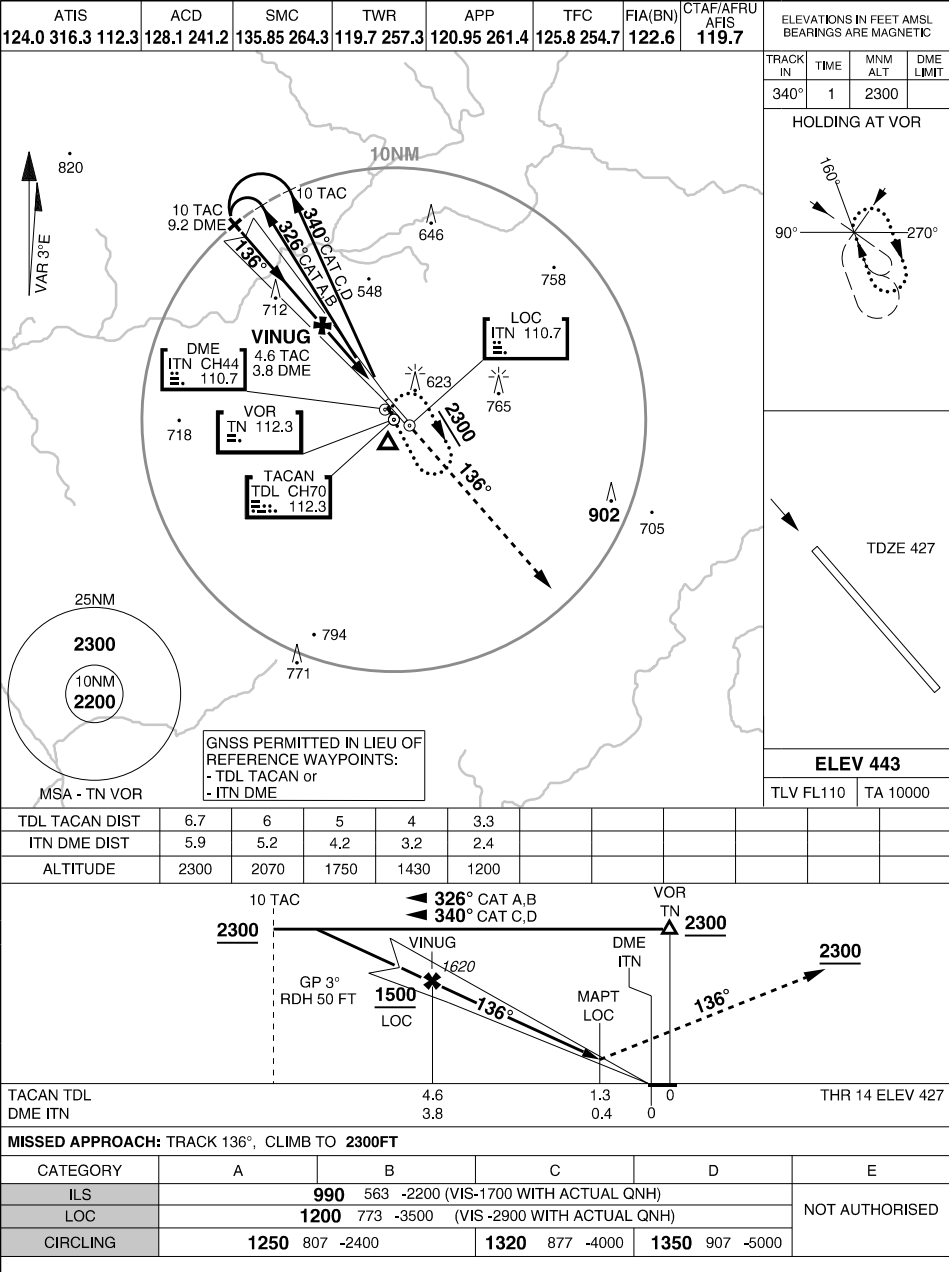


S14 31.26 E132 22.67
PANS-OPS, WGS 84

ILS-X OR LOC-X RWY 14 USING TDL TAC or ITN DME
TINDAL (YPTN)



CHANGES: ADD ILS, REVISED PROCEDURE

05 SEP 24

AIS-AF
MILITARY USE ONLY

TINDAL (YPTN)
ILS-X OR LOC-X RWY 14 USING TDL TAC or ITN DME