

MILITARY USE ONLY

COMPOSITE
TOWNSVILLE INTL (YBTL)

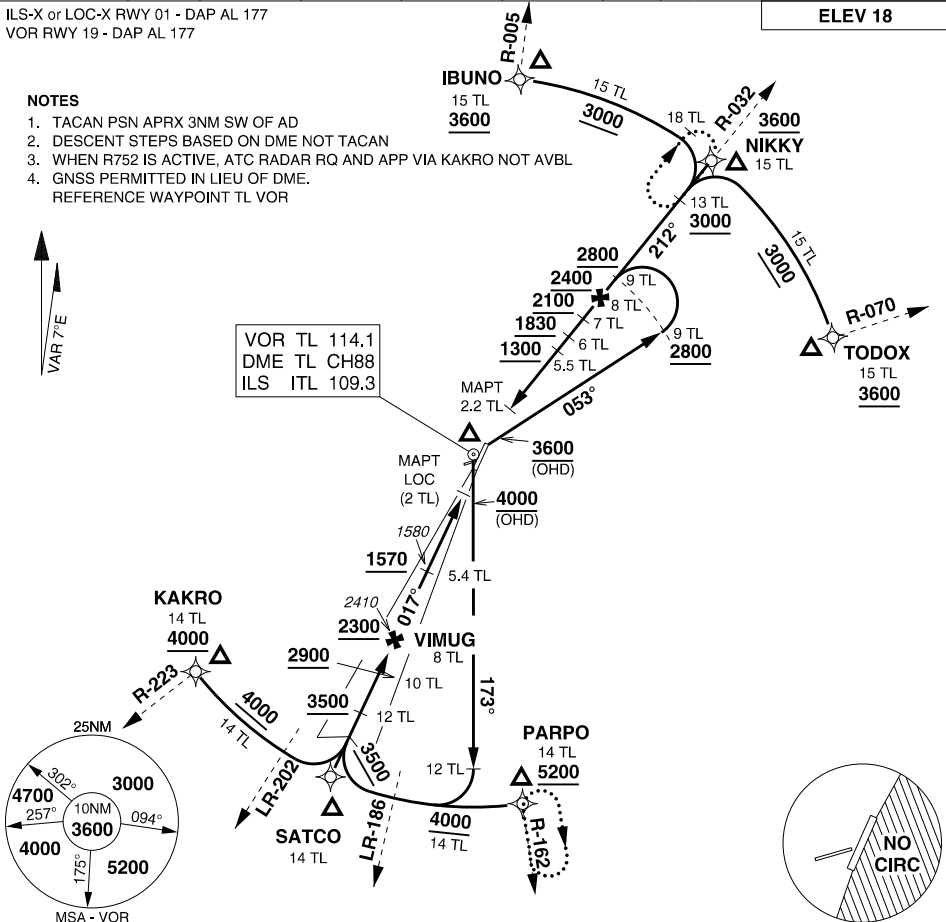
ATIS	AWIS (AH)	ACD	SMC	TWR	APP/DEP	FIA (BN)	CTAF/AFRU	ELEVATIONS IN FEET AMSL
114.1 133.5 276	133.5	128.1 236.1	121.8 264.6	118.3 257.8	126.8 307.8	120.55	/PAL 118.3	BEARINGS ARE MAGNETIC

ILS-X or LOC-X RWY 01 - DAP AL 177
VOR RWY 19 - DAP AL 177

ELEV 18

NOTES

1. TACAN PSN APRX 3NM SW OF AD 3600
 2. DESCENT STEPS BASED ON DME NOT TACAN
 3. WHEN R752 IS ACTIVE, ATC RADAR RQ AND APP VIA KAKRO NOT AVBL
 4. GNSS PERMITTED IN LIEU OF DME.
- REFERENCE WAYPOINT TL VOR



PROCEDURE	S-I MINIMA					CIRCLING				MISSED APPROACH				
						C		D						
RWY 01 ILS-X or LOC-X S-I ILS	370 352 -1600 (VIS -1200 WITH ACTUAL QNH)					1350 1332 -4000		1350 1332 -5000		TRACK 017°. AT 2.5 DME OUTBOUND TURN RIGHT, TRACK 096°. CLIMB TO 3000FT OR AS DIRECTED BY ATC. MAX IAS: IN TURN: 190KT UNTIL TRACKING 096°				
RWY 01 ILS-X or LOC-X S-I LOC/DME	880 862 -4600 (VIS -4400 WITH ACTUAL QNH)					1350 1332 -4000		1350 1332 -5000		TRACK 017°. AT 2.5 DME OUTBOUND TURN RIGHT, TRACK 096°. CLIMB TO 3000FT OR AS DIRECTED BY ATC. MAX IAS: IN TURN: 190KT UNTIL TRACKING 096°				
VOR RWY 19 S-I VOR/DME	620 602 -3100 (VIS -2800 WITH ACTUAL QNH)					1350 1332 -4000		1350 1332 -5000		TRACK TO TL VOR THEN TURN RIGHT, TRACK 290°. CONTINUE CLIMB TO 4700FT OR AS DIRECTED BY ATC.				
TL DME DIST (ILS/LOC)	13	12	11.4	10		9	8	7	6	5.4	5	4	3.2	
ALTITUDE	4000	3690	3500	3050		2730	2410	2090	1770	1580	1450	1130	880	

CHANGES: WPT IDENTs, NOTE 3, DAP AMENDMENT 177

30 NOV 23

**ACG
MILITARY USE ONLY**

TOWNSVILLE INTL (YBTL)
COMPOSITE