

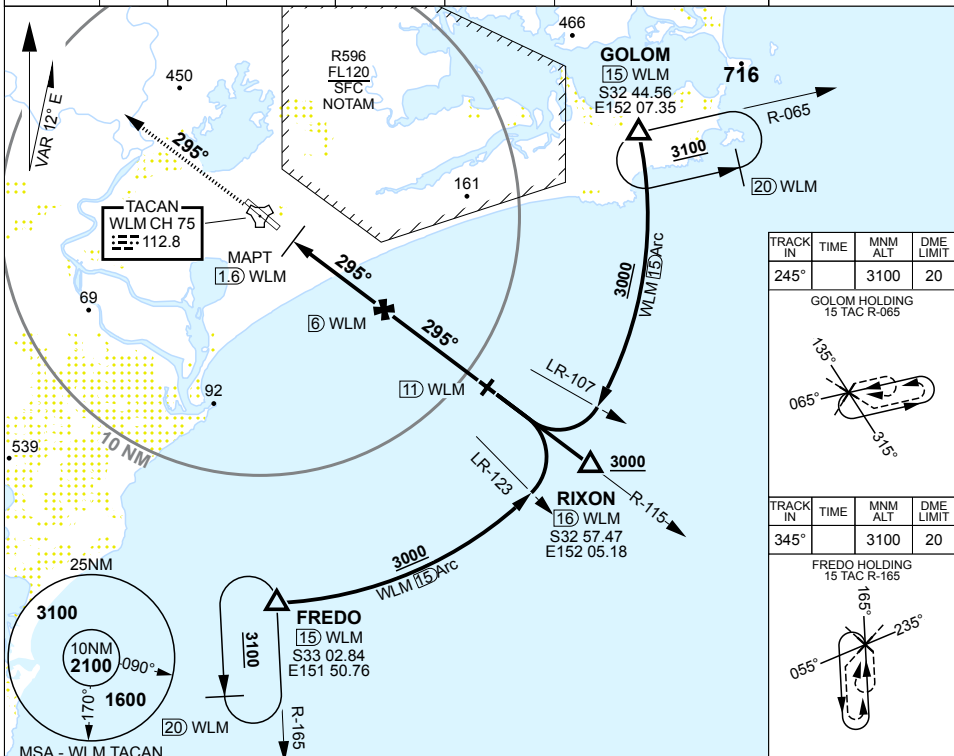
PANS-OPS, WGS-84

TACAN RWY 30
WILLIAMTOWN (YWLM)

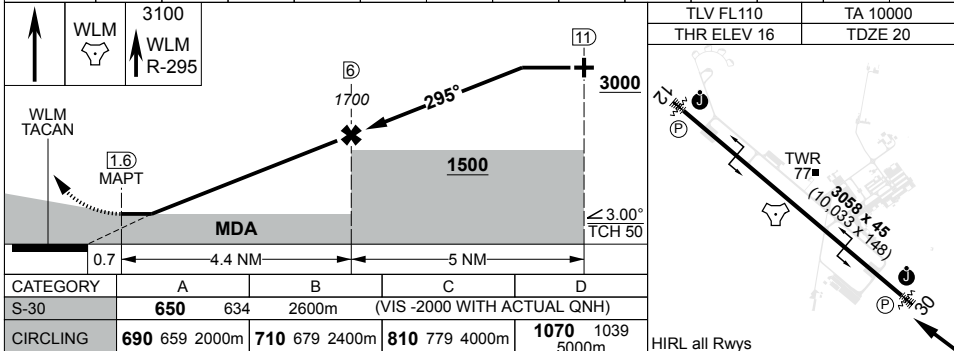
1. GOLOM NOT AVBL WHEN R596 ACTIVE UNLESS APPROVED BY ATC.

MISSED APPROACH:
TRACK DIRECT TO TACAN THEN R-295. CLIMB TO **3100FT**
OR AS DIRECTED BY ATC.

ATIS 134.45 316.1 365	ACD 130.35	SMC 121.8	TWR 118.3 280.9	WILLY APP HIGH 133.3 261.4	WILLY APP LOW 135.7 293.4	FIA (BN) 125.7	CTAF/AFRU/PAL 118.3	ELEVATIONS IN FEET AMSL BEARINGS ARE MAGNETIC
------------------------------------	----------------------	---------------------	---------------------------	---	--	--------------------------	-------------------------------	--



WLM TAC	2.7	3	4	5	6	7	8	9	10	10.1			
ALTITUDE	650	750	1070	1380	1700	2020	2340	2660	2980	3000			



CHANGES: TAC CH/FREQ

S32 47.70 E151 50.07

WILLIAMTOWN (YWLM)
TACAN RWY 30

21 MAR 24

**AIS-AF
MILITARY USE ONLY**