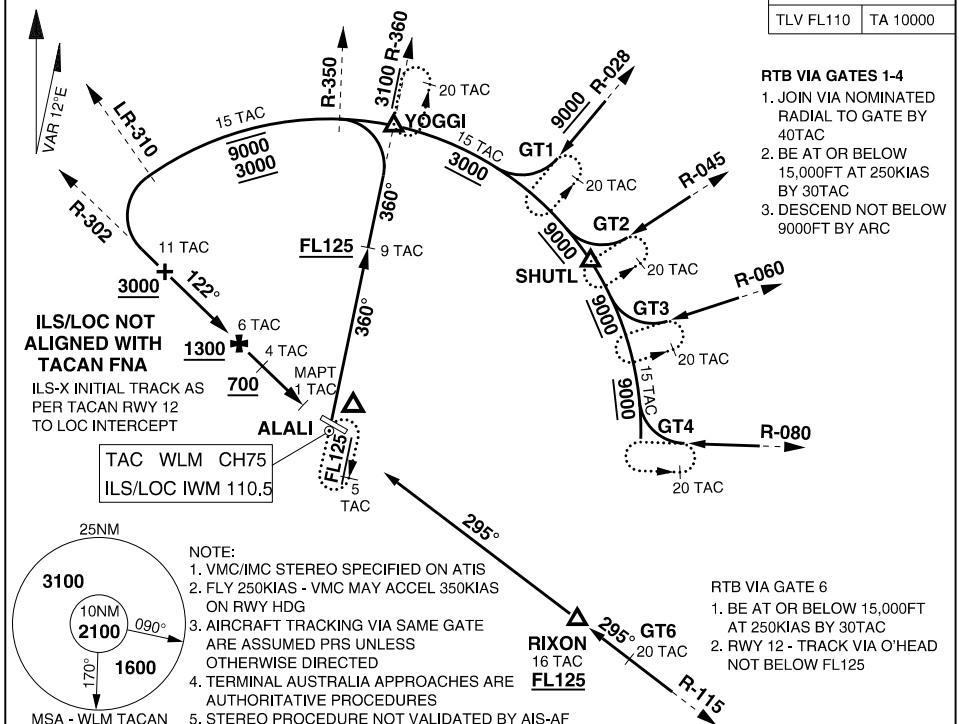


MILITARY USE ONLY

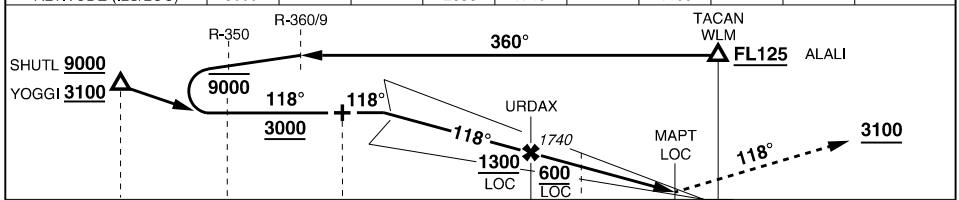
S32 47.70 E151 50.07  
PANS-OPS, WGS 84

STEREO RWY 12  
WILLIAMTOWN (YWLM)

ATIS 134.45 365 316.1	ACD 130.35	SMC 121.8	TWR 118.3 280.9	WILLY APP HIGH 133.3 261.4	WILLY APP LOW 135.7 293.4	FIA (BN) 125.7	CTAF/ AFRU/PAL 118.3	ELEVATIONS IN FEET AMSL BEARINGS ARE MAGNETIC
								ELEV 31
								TLV FL110 TA 10000



WLM TACAN DIST	10	9	8	7	6	5	4	3	2.3
ALTITUDE (ILS/LOC)	3000	2690	2370	2050	1740	1420	1100	780	560



TACAN WLM	15	ARC	15	11	6	3.5	1.2	0	THR 12 ELEV 29
-----------	----	-----	----	----	---	-----	-----	---	----------------

PROCEDURE	S-MINIMA	CIRCLING - CAT C	CIRCLING - CAT D	MISSED APPROACH
ILS-X RWY 12	370 341 -1200 (VIS -800 WITH ACTUAL QNH)	810 779 -4000	1070 1039 -5000	TRACK 118°, CLIMB TO 3100FT or AS DIRECTED BY ATC
LOC-X RWY 12	560 529 -2000 (VIS -1500 WITH ACTUAL QNH)	810 779 -4000	1070 1039 -5000	
TACAN RWY 12	640 609 -2500 (VIS -1900 WITH ACTUAL QNH)	810 779 -4000	1070 1039 -5000	TRACK DCT TO TACAN THEN R-122, CLIMB TO 3100FT or AS DIRECTED BY ATC

**NOTE:** 1. ACG USE ONLY - PROCEDURE NOT PANS-OPS 86/NATO SUPP/MOS173 COMPLIANT

CHANGES: TAC CH  
21 MAR 24

ACG  
MILITARY USE ONLY

WILLIAMTOWN (YWLM)  
STEREO RWY 12