

PANS-OPS, WGS-84

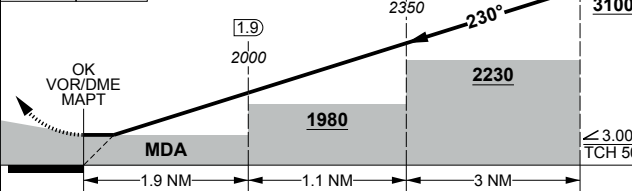
VOR RWY 23 (CAT A,B)
OAKY (YBOK)

1. NO CIRCLING SW OF RWY 09/27 AND RWY 14/32 BEYOND 2NM.

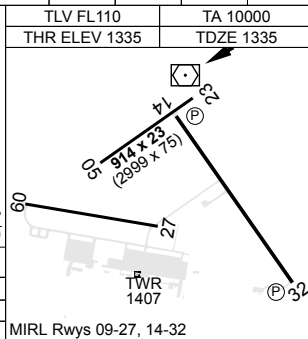
MISSED APPROACH:
TURN RIGHT. MAX IAS IN TURN: 140KT. TRACK 020°. CLIMB TO **4600FT.**

[illegible]

TLV FL110	TA 10000
THR ELEV 1335	TDZE 1335



CATEGORY	A	B	C	D
S-23	1930	594	3400m	NA
CIRCLING	2170	834	2400m	NA



CHANGES: REMOVED TFC FREQ

S27 24.69 E151 44.12

13 JUN 24

**AIS-AF
MILITARY USE ONLY**

9 E151 44.12 **OAKEY (YBOK)**
VOR RWY 23 (CAT A,B)