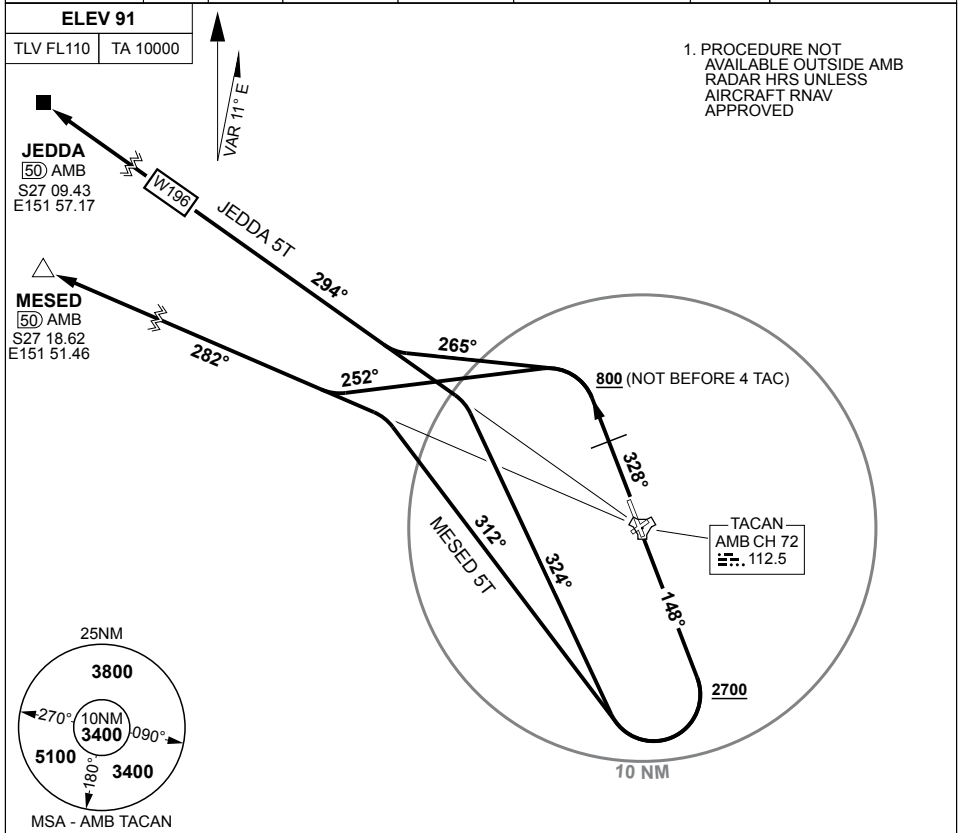


SID NORTH WEST AMBERLEY (YAMB)

PANS-OPS, WGS 84

ATIS/AWIS (AH) 123.3 316.2	ACD 134.6	SMC 129.35	TWR 118.3 264.6	APP 126.2 335.8	AFRU(AH)/PAL/CTAF 118.3	FIA(BN) 121.2	ELEVATIONS IN FEET AMSL BEARINGS ARE MAGNETIC
--------------------------------------	---------------------	----------------------	---------------------------	---------------------------	-----------------------------------	-------------------------	--



JEDDA FIVE TANGO

RWY 15

GRAD 4.3% TO 2700FT THEN 3.3%, TRACK 148°, AT 2700FT, BUT NOT BEFORE DER, TURN RIGHT, TRACK 324° TO INTCP OUTBOUND TRACK

RWY 33

GRAD 3.9% TO 800FT THEN 3.3%, TRACK 328°, AT OR ABV 800FT, BUT NOT BEFORE 4 TAC, TURN LEFT, TRACK 265° TO INTCP, OUTBOUND TRACK

MESED FIVE TANGO

RWY 15

GRAD 4.3% TO 2700FT THEN 3.3%, TRACK 148°, AT 2700FT, BUT NOT BEFORE DER, TURN RIGHT, TRACK 312° TO INTCP OUTBOUND TRACK

RWY 33

GRAD 3.9% TO 800FT THEN 3.3%, TRACK 328°, AT OR ABV 800FT, BUT NOT BEFORE 4 TAC, TURN LEFT, TRACK 252° TO INTCP OUTBOUND TRACK

CHANGES: VALIDITY INDICATOR, RTE IDENT

S27 38.44 E152 42.71

12 JUN 25

**AIS-AF
MILITARY USE ONLY**

**AMBERLEY (YAMB)
SID NORTH WEST**