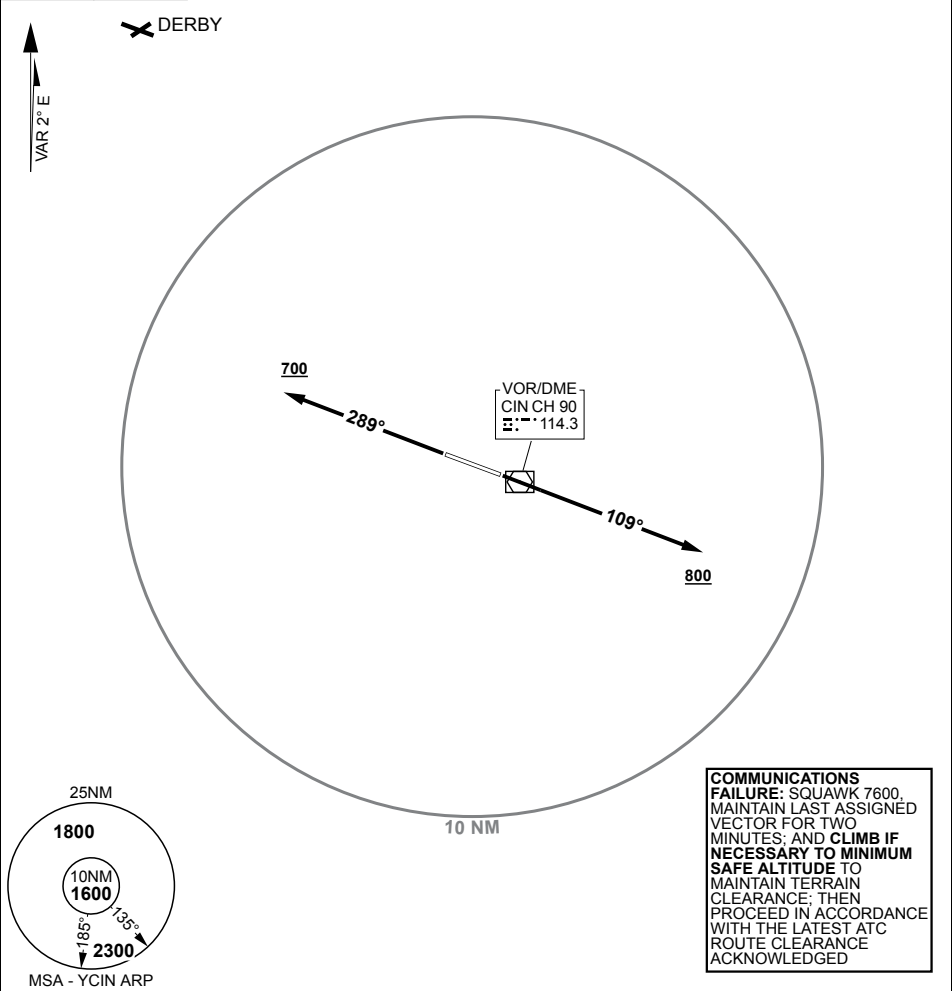


SID (RADAR) ALL RWYS
CURTIN (YCIN)

PANS-OPS, WGS 84

| | | | | |
|--------------|-----------------------|--------------------|---------------|--|
| TWR 118.3 | FIA (BN CEN) 122.1 | CTAF/AFRU 126.7 | PAL 120.35 | ELEVATIONS IN FEET AMSL BEARINGS ARE MAGNETIC |
|--------------|-----------------------|--------------------|---------------|--|

| | |
|-----------|----------|
| ELEV 300 | |
| TLV FL110 | TA 10000 |



CURTIN ONE

RWY 11

GRAD 3.3%, TRACK 109°, AT 800FT, BUT NOT BEFORE DER, TURN TO ASSIGNED HEADING OR TRACK

RWY 29

GRAD 3.3%, TRACK 289°, AT 700FT, BUT NOT BEFORE DER, TURN TO ASSIGNED HEADING OR TRACK

CHANGES: NEW CHART

S17 34.89 E123 49.69

07 SEP 23

**AIS-AF
MILITARY USE ONLY**

CURTIN (YCIN)
SID (RADAR) ALL RWYS