

PANS-OPS, WGS-84

MISSED APPROACH:
TRACK DIRECT TO TACAN, TURN RIGHT, TRACK R-270, CLIMB
TO **3500FT** OR AS DIRECTED BY ATC.

1506

VAR 13° E

99

296

R-360

(15) ESL

4500

ESL 10 DTC

2000

BRONY

(10) ESL

S37 56.36

E147 12.02

10 NM

D353

1500

SFC

MON-FRI

EXC HOL

SR-SS

99

WEST SALE

265

33

TACAN

ESL CH 18

... 108.1

831

MAPT

(1) ESL

(5) ESL

252°

LR-060

(10) ESL

R-072

LR-084

NOTAM

SFC

NOTAM

R393

D392

2000

ESL 10 DTC

LONGFORD HELI

480

207

JOSSO

(10) ESL

S38 15.90

E147 06.50

(15) ESL

4500

R-180

25NM

716

360°

4400

3500

10NM

1900

270°

3400

180°

1900

MSA - ESL TACAN

TRACK IN TIME MNM ALT DME LIMIT

180° 4500 15

BRONY HOLDING

10 TAC R-360

070° 250° 360°

TRACK IN TIME MNM ALT DME LIMIT

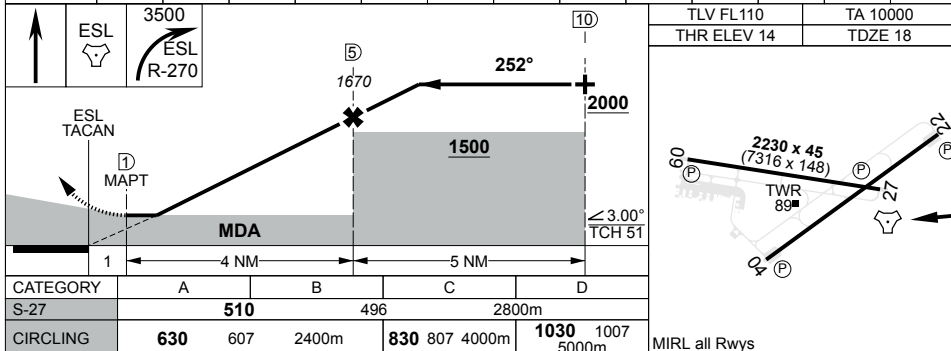
360° 4500 15

JOSSO HOLDING

10 TAC R-180

070° 180° 250°

ESL TAC	1.3	2	3	4	5	6							
ALTITUDE	510	720	1040	1360	1670	2000							



MIRL all Rwys

CHANGES: CIRCLING

S38 05.94 E147 08.97

04 SEP 25

**AIS-AF
MILITARY USE ONLY**

EAST SALE (YMES)
TACAN RWY 27