

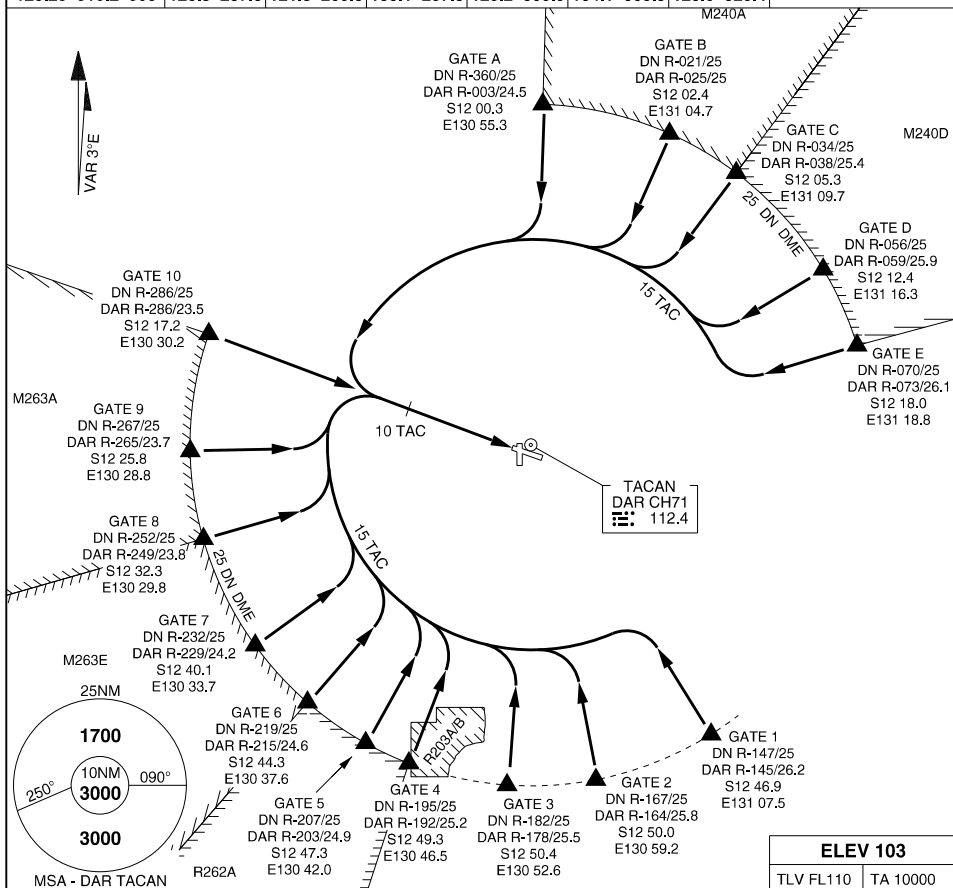
STAR RWY 11 (ACG USE ONLY)

PANS-OPS. WGS 84

MILITARY USE ONLY

DARWIN INTL (YPDN)

ATIS			ACD		SMC		TWR		APP E		APP W		DEP		ELEVATIONS IN FEET AMSL BEARINGS ARE MAGNETIC
128.25	316.2	308	126.8	237.3	121.8	265.3	133.1	257.8	125.2	305.5	134.1	363.8	123.0	325.4	



DISCO THREE ARRIVAL

- MAX IAS 250KT BY ASSIGNED GATE
- INTERCEPT ASSIGNED GATE PRIOR TO LEAVING ACTIVE MILITARY OPERATING/ RESTRICTED AREA
- FROM ASSIGNED GATE TRACK DCT DAR TAC
- INTERCEPT 15 TAC DAR ARC TO INBOUND TRACK RWY 11

IMC

- MAKE TACAN OR VOR/DME RWY 11 APPROACH

VMC

- DESCEND NOT BELOW 4000FT UNTIL 10 TAC DAR, THEN
- TRACK FOR INITIAL AND PITCH OR FOR STRAIGHT-IN VISUAL APCH

- **FOR INITIAL AND PITCH**
 - **TRACK FOR STRAIGHT INITIAL**
 - **AT 10 TAC DAR DES AND REACH 2000FT BY 5 TAC**
 - **MAINTAIN NOT BELOW 2000FT UNTIL BASE TURN**

- FOR STRAIGHT-IN VISUAL APCH
- TRACK FOR STRAIGHT-IN VISUAL APCH RWY 11

CHANGES: SUA IDENTIS, EDITORIAL

28 NOV 24

MILITARY USE ONLY

AIS-AF

DARWIN INTL (YPDN)

STAR RWY 11 (ACG USE ONLY)