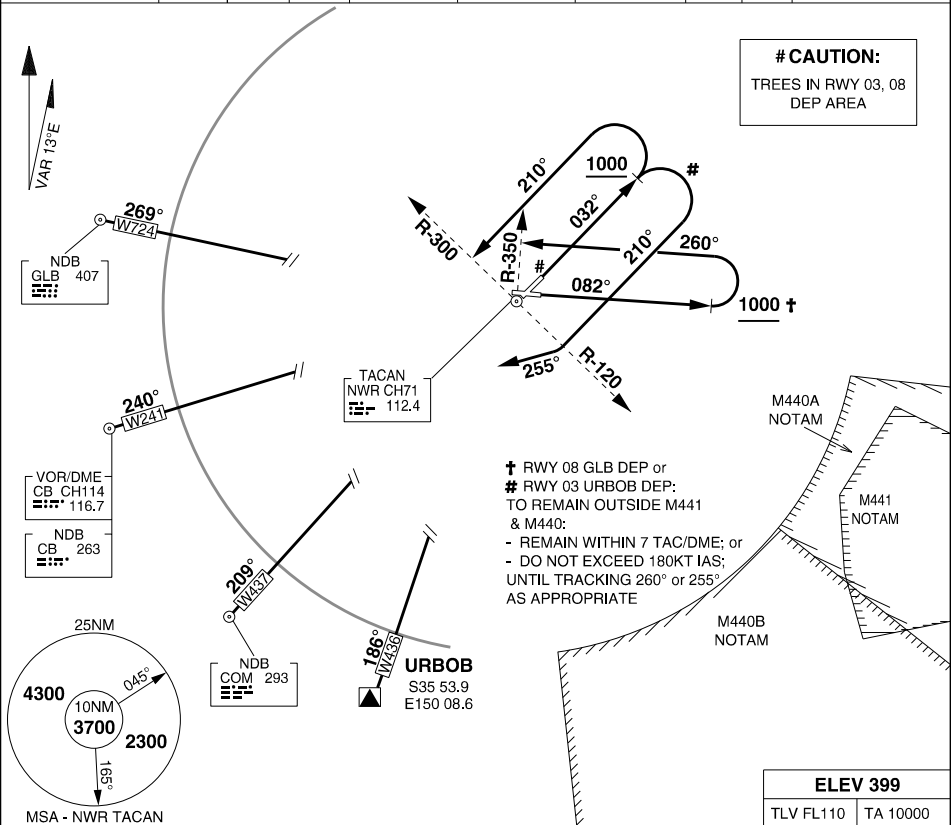


S34 56.94 E150 32.22
PANS-OPS, WGS 84

SID SOUTH & WEST RWYS 03/08
MILITARY USE ONLY
NOWRA (YSNW)

ATIS / AWIS (AH)	AFIS	ACD	SMC	TWR	APP	CTAF/AFRU(AH)	FIA(ML)	PAL	ELEVATIONS IN FEET AMSL BEARINGS ARE MAGNETIC
125.65 280.4 359	118.85	128.35	135.85	118.85 267.2	123.5 352.15	118.85	121.2	122.2	



**URBBOB THREE TANGO DEPARTURE
COOMA (COM) FIVE TANGO DEPARTURE
CANNBERRA (CB) FIVE TANGO DEPARTURE
GOULBURN (GLB) FIVE TANGO DEPARTURE**

RWY 03

- GRAD 4.8% TO 2600FT THEN 3.3% (EXC URBBOB)
- TRACK 032°
- AT 1000FT BUT NOT BEFORE DER:

FOR URBBOB #

- GRAD 3.3%
- TURN RIGHT, TRACK 210°
- AFTER CROSSING NWR R-120, TURN RIGHT
- TRACK 255° TO INTERCEPT OUTBOUND TR

FOR COM & CB

- TURN LEFT, TRACK 210°
- AFTER CROSSING NWR R-300, TURN LEFT
- INTERCEPT OUTBOUND TRACK

RWY 08 †

- GRAD 3.8% TO 2600FT THEN 3.3%
- TRACK 082°
- AT 1000FT BUT NOT BEFORE DER:

FOR GLB

- TURN LEFT, TRACK 260°
- AFTER CROSSING NWR R-350, TURN LEFT
- INTERCEPT OUTBOUND TRACK

CHANGES: CAUTION NOTE.

27 NOV 25

MILITARY USE ONLY
AIS-AF

NOWRA (YSNW)
SID SOUTH & WEST RWYS 03/08