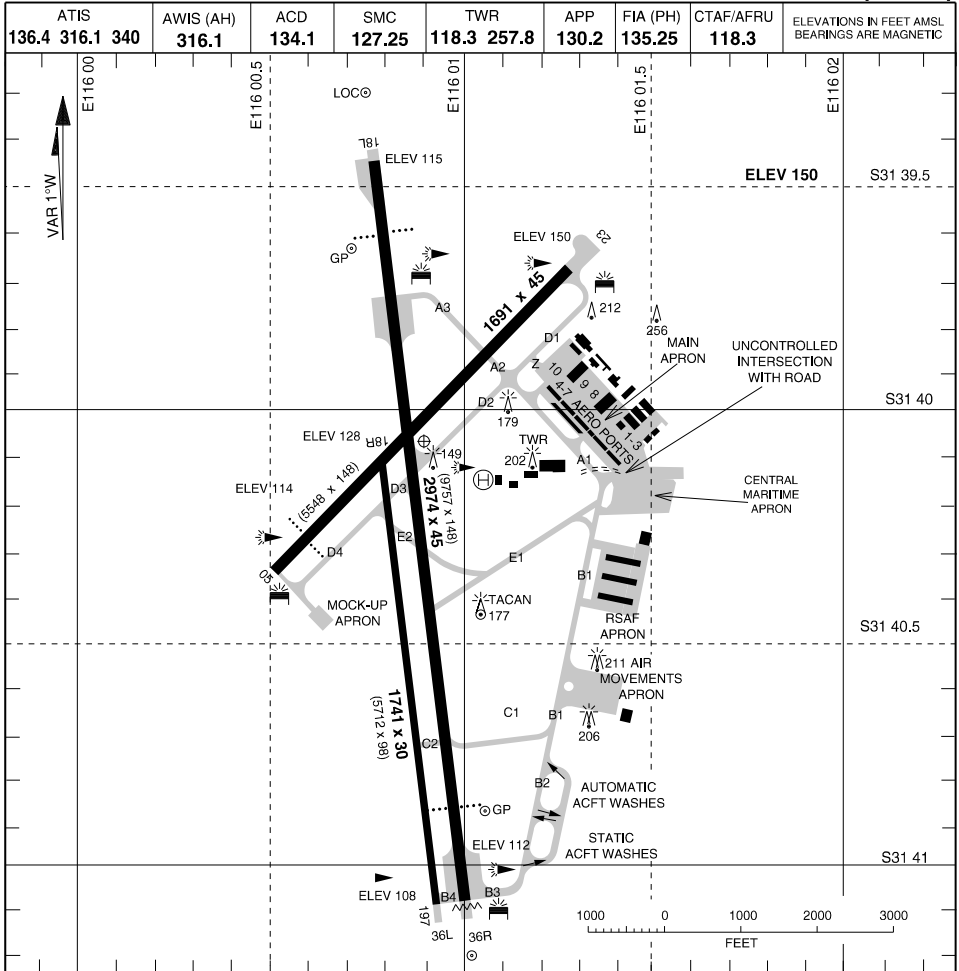


MILITARY USE ONLY

S31 40.06 E116 00.90  
PANS-OPS, WGS 84

AERODROME CHART  
PEARCE (YPEA)



LIGHTING				NOTES RWY 18 & 23 - RIGHT CIRCUIT  CAUTION CONTINUOUS HEL OPS
RWY	APPROACH	THR	RUNWAY	
18L (175°)	PAPI (6) - 3.00° 47FT	GREEN	MIRL (3)	
36R (355°)	PAPI (6) - 3.00° 68FT			
18R (175°)	NIL	NIL	NIL	
36L (355°)				
05 (046°)	PAPI (6) - 3.00° 39FT	GREEN	MIRL (3)	
23 (226°)	NIL			
TAXIWAY: A,B,C,D AND Z - CENTRELINE LIGHTING, E,C2,B3 - UNLIT OBSTRUCTION & HAZARD BEACONS EMERGENCY: PORTABLE ELECTRIC LIGHTING ON 15 MIN NOTICE SDRY PWR AVBL				

CHANGES: B3 & B4 TWY, RWY 05 PAPI, RWY 05 / 23 WINDSOCKS

04 SEP 25

AIS-AF  
MILITARY USE ONLY

PEARCE (YPEA)  
AERODROME CHART