

**PANS-OPS, WGS-84**

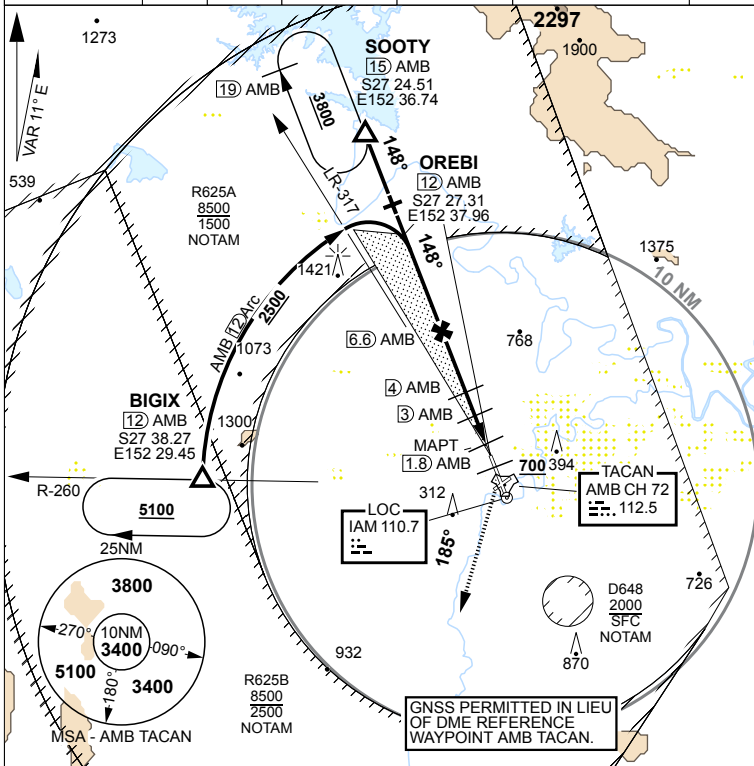
LOC-Y RWY 15  
**AMBERLEY (YAMB)**

1. SOOTY HOLDING TOLERANCES NOT CONTAINED  
WITHIN AMB RESTRICTED AIRSPACE.

**MISSED APPROACH:**

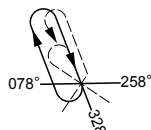
TRACK 148°, AT 700FT TURN RIGHT, TRACK 185°, CLIMB  
TO 5100FT.

ATIS/AWIS (AH) <b>123.3 316.2</b>	ACD <b>134.6</b>	SMC <b>129.35</b>	TWR <b>118.3 264.6</b>	APP <b>126.2 335.8</b>	AFRU(AH)/PAL/CTAF <b>118.3</b>	FIA(BN) <b>121.2</b>	ELEVATIONS IN FEET AMSL BEARINGS ARE MAGNETIC
--------------------------------------	---------------------	----------------------	---------------------------	---------------------------	-----------------------------------	-------------------------	--



TRACK IN	TIME	MNM ALT	DME LIMIT
148°		3800	19

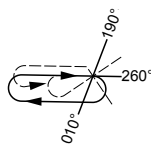
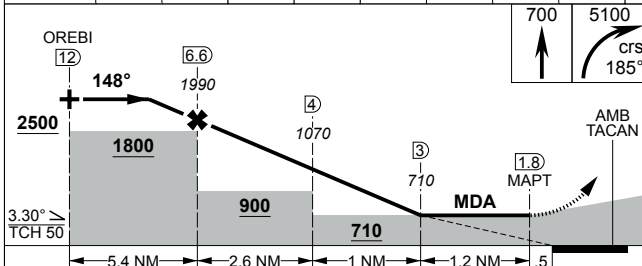
SOOTY HOLDING  
15 TAC R-327



MAX IAS: SECTOR  
1 ENTRY: 180KT

TRACK IN	TIME	MNM ALT	DME LIMIT
080°	1	5100	

BIGIX HOLDING  
12 TAC R-260

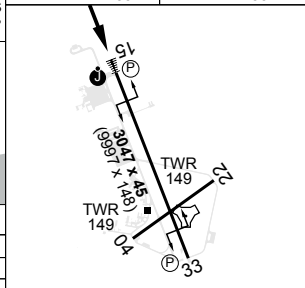
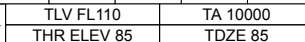
[illegible]

	STAFF	ENG	FIN	HEALTH	IS
CATEGORY	A	B	C	D	

CATEGORY	A	B	C	D
SLUG 15	310	610	2200	

S-LOC 15	710	619	2300m	
			1550	1150

CIRCLING	<b>790</b> 699 2000m	<b>890</b> 799 2400m	<b>1090</b> 999 4000m	<b>1350</b> 1459 5000m
----------	----------------------	----------------------	-----------------------	---------------------------



MIRL Rwy 04-22	HIRL Rwy 15-33
----------------	----------------

CHANGES: REMOVED CIRCLING RESTRICTION	S27 38.44	E152 42.71
---------------------------------------	-----------	------------

19 MAR 26

**AIS-AF**  
**MILITARY USE ONLY**

**AMBERLEY (YAMB)**  
LOC-Y RWY 15