

TACAN ESL Chan 18	APCH CRS 091°	RWY LDG THR ELEV AD ELEV	7316 23 23
----------------------	------------------	--------------------------------	------------------

PANS-OPS, WGS-84

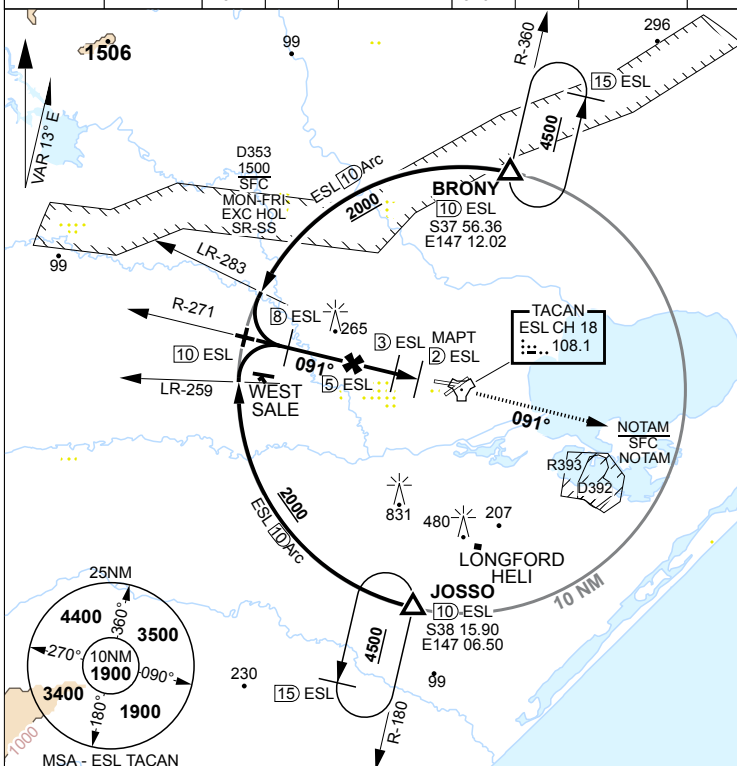
TACAN RWY 09 EAST SALE (YMES)

MISSED APPROACH:

TRACK DIRECT TO TACAN THEN R-091, CLIMB TO 3500FT OR AS DIRECTED BY ATC.

ATIS 125.4 350	AWIS (AH) 125.4	ACD 133.6 134.1	SMC 127.25	TWR 118.3 257.8	APP 123.3 340.2	ACC 135.8	CTAF/AFRU 118.3	FIA (ML) 124.0
-------------------	--------------------	-----------------------	---------------	--------------------	-----------------------	--------------	--------------------	-------------------

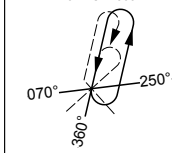
ELEVATIONS IN FEET AMSL
BEARINGS ARE MAGNETIC



TRACK IN	TIME	MNM ALT	DME LIMIT
----------	------	---------	-----------

180° 4500 15

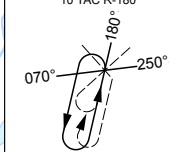
BRONY HOLDING
10 TAC R-360



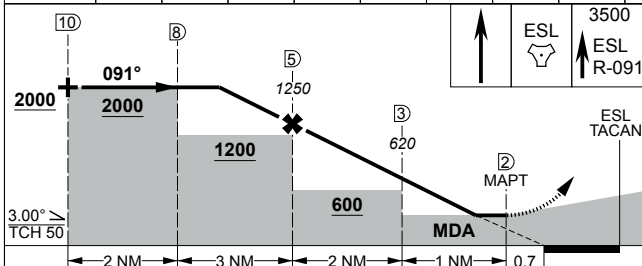
TRACK IN	TIME	MNM ALT	DME LIMIT
----------	------	---------	-----------

360° 4500 15

JOSJO HOLDING
10 TAC R-180

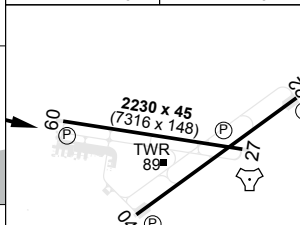


ESL TAC	7.3	7	6	5	4	3	2.8												
ALTITUDE	2000	1890	1570	1250	940	620	540												



CATEGORY	A	B	C	D
S-09	540	517	2800m	
CIRCLING	630	607	2400m	830 807 4000m 1030 1007 5000m

TLV FL110	TA 10000
THR ELEV 23	TDZE 23



MIRL all Rwy's

CHANGES: CIRCLING

S38 05.94 E147 08.97

04 SEP 25

AIS-AF
MILITARY USE ONLY

EAST SALE (YMES)
TACAN RWY 09