

LOC/DME IPC 111.9 Chan 56	APCH CRS 355°	RWY LDG THR ELEV 112 AD ELEV 150
---------------------------------	------------------	--

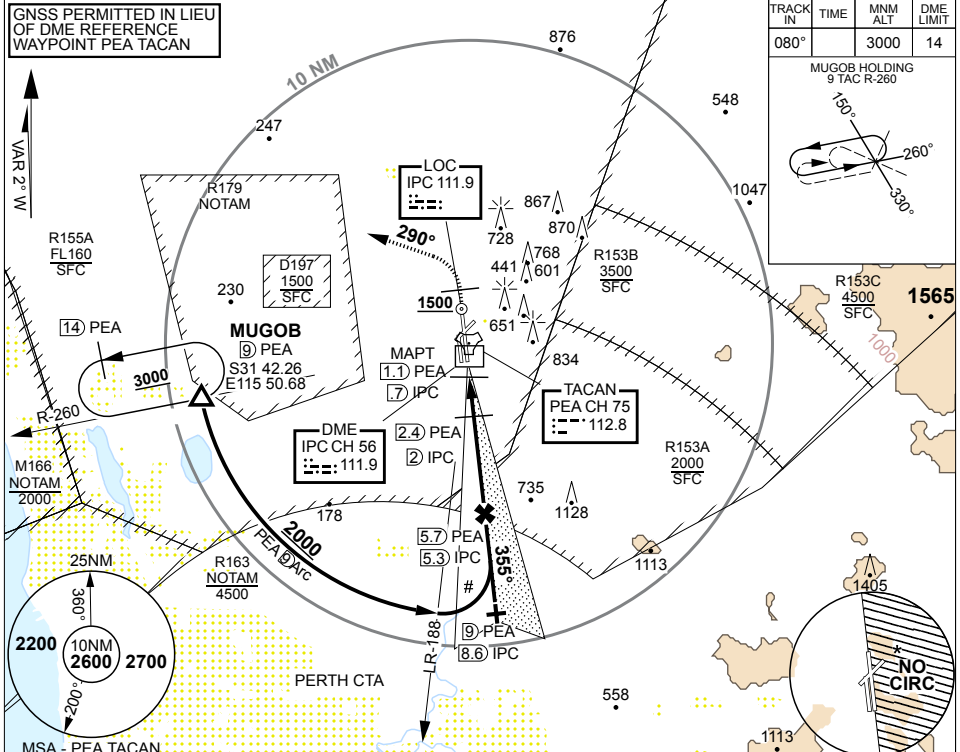
PANS-OPS, WGS-84

LOC-Z RWY 36R
PEARCE (YPEA)

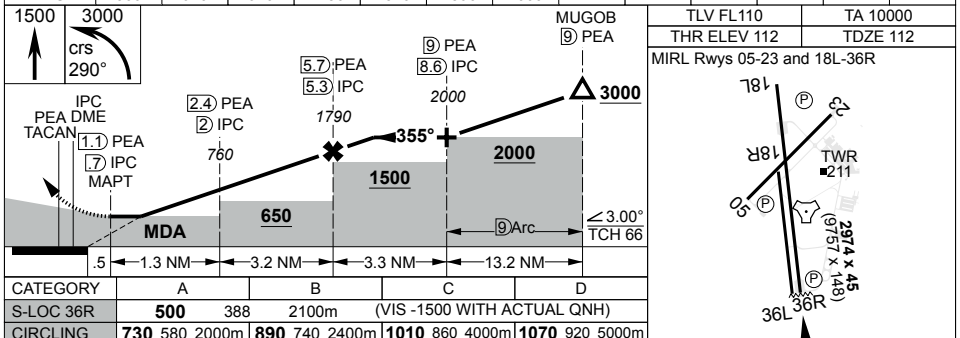
1. NO CIRCLING EAST OF RWY 18L/36R.
2. PROC NOT AVBL DRG CTAF HR UNLESS CLEARED BY PH APP.
- #3. MAX IAS IN TURN 210KT.

MISSED APPROACH:
TRACK 355° AT 1500FT TURN LEFT, TRACK 290°, CLIMB TO 3000FT.

ATIS 136.4 316.1 340	AWIS (AH) 316.1	ACD 134.1	SMC 127.25	TWR 118.3 257.8	APP 130.2	FIA (PH) 135.25	CTAF /AFRU 118.3	ELEVATIONS IN FEET AMSL BEARINGS ARE MAGNETIC
-------------------------	--------------------	--------------	---------------	--------------------	--------------	--------------------	---------------------	--



MSA - PEA TACAN	1.6	2	3	4	5	6	6.3												
PEA TAC	1.6	2	3	4	5	6	6.3												
IPC DME	1.2	1.6	2.6	3.6	4.6	5.6	5.9												
ALTITUDE	500	620	940	1250	1570	1890	2000												



CATEGORY	A	B	C	D
S-LOC 36R	500	388	2100m	(VIS -1500 WITH ACTUAL QNH)
CIRCLING	730 580 2000m	890 740 2400m	1010 860 4000m	1070 920 5000m

CHANGES: TCH, ALT, MSA, MAGVAR

S31 40.06 E116 00.90

19 MAR 26

AIS-AF
MILITARY USE ONLY

PEARCE (YPEA)
LOC-Z RWY 36R