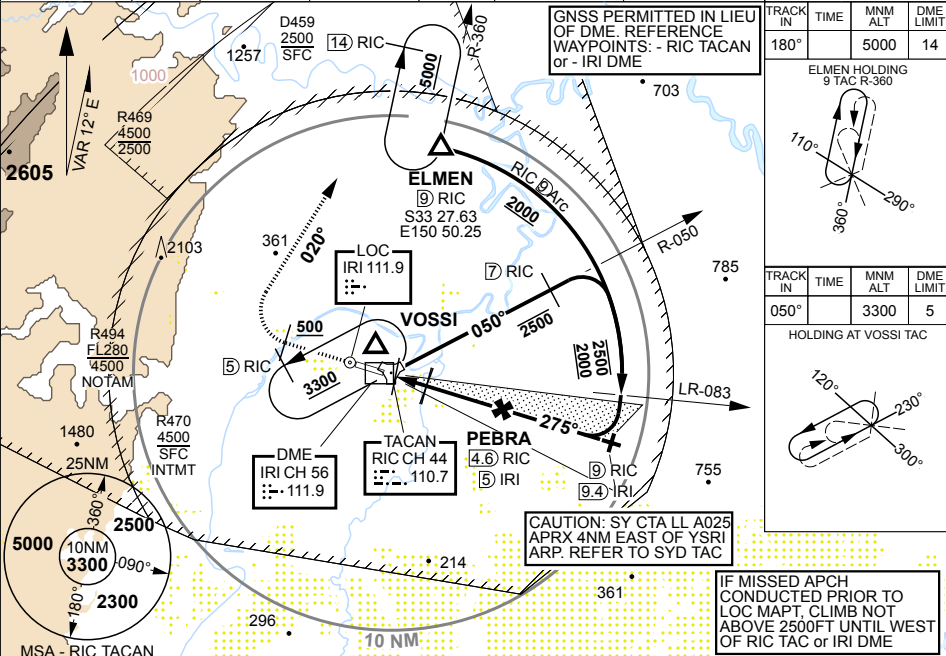
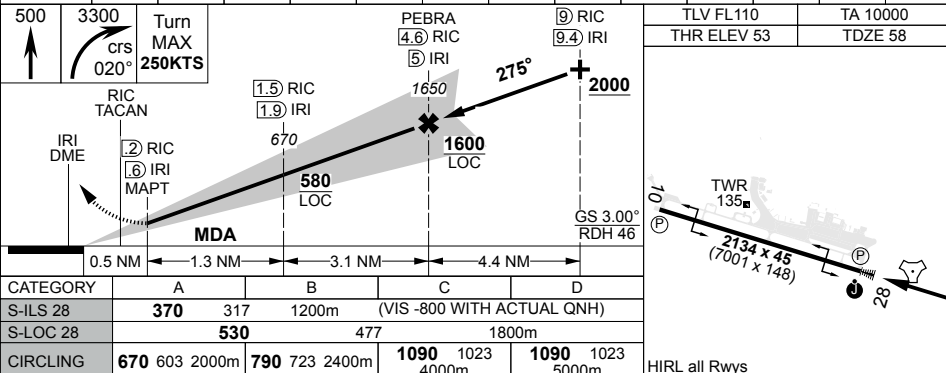


ILS-Y or LOC-Y RWY 28 USING RIC TAC or IRI DME
PANS-OPS, WGS-84 **RICHMOND (YSRI)**

- MISSED APPROACH:**
TRACK 275°, AT 500FT TURN RIGHT, MAX IAS
IN TURN: 250KT. TRACK 020°, CLIMB TO
3300FT OR AS DIRECTED BY ATC.

123.5	274.55	123.25	133.5	237.5	133.5	333.5	124.55	133.5	133.5
-------	--------	--------	-------	-------	-------	-------	--------	-------	-------

[illegible]

S33 36.04 E150 46.84

AL S33 36.04 E150 46.84 **RICHMOND (YSRI)**
 ILS-Y or LOC-Y RWY 28 USING RIC TAC or IRI DME
 AIS-AF: MILITARY USE ONLY