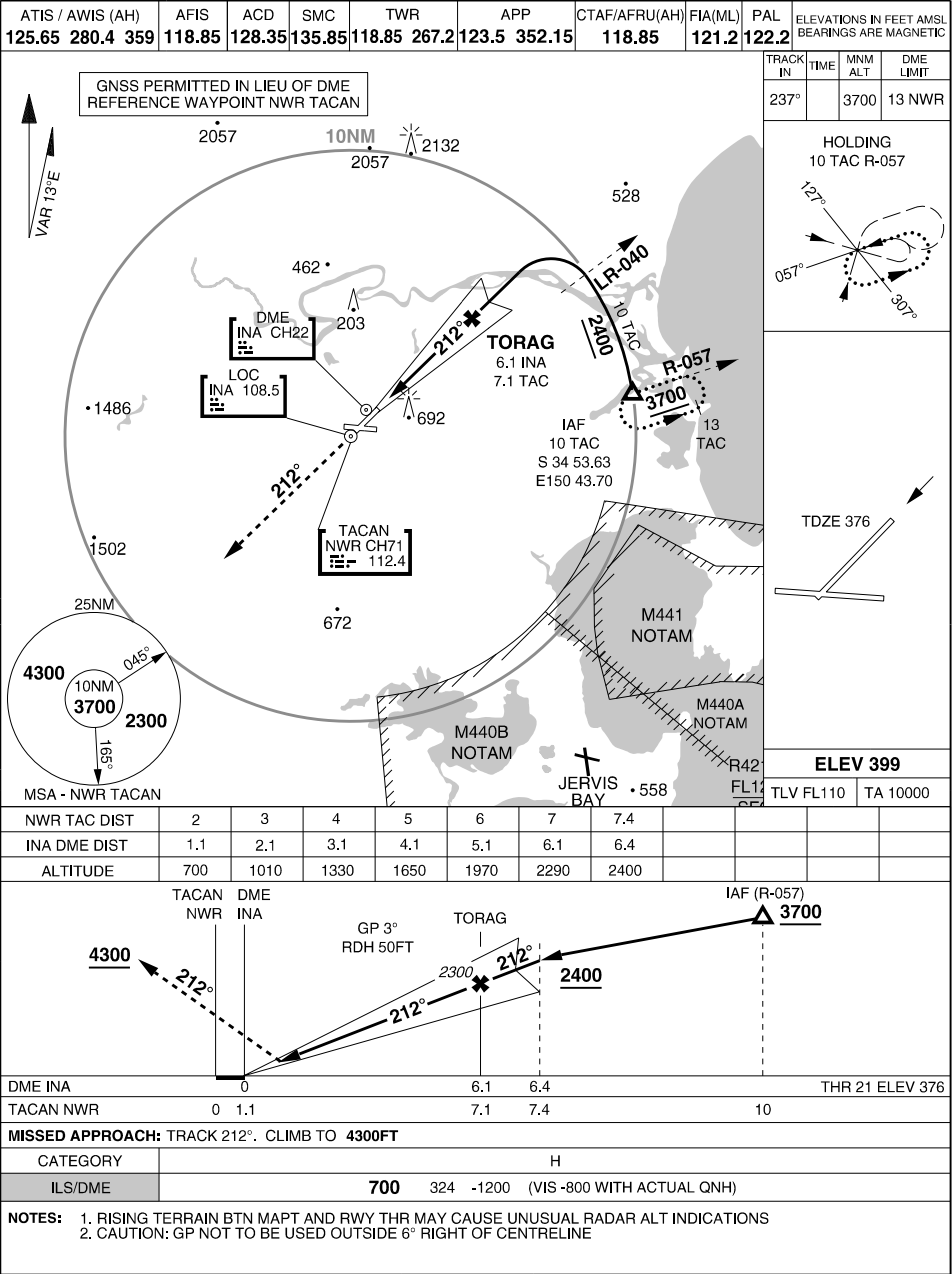


S34 56.94 E150 32.22  
PANS-OPS, WGS 84

ILS-W RWY 21 USING NWR TACAN or INA DME (CAT H)  
**MILITARY USE ONLY**  
**NOWRA (YSNW)**



CHANGES: MSA  
**19 MAR 26**

**AIS-AF**  
**MILITARY USE ONLY**  
**NOWRA (YSNW)**  
ILS-W RWY 21 USING NWR TACAN or INA DME (CAT H)