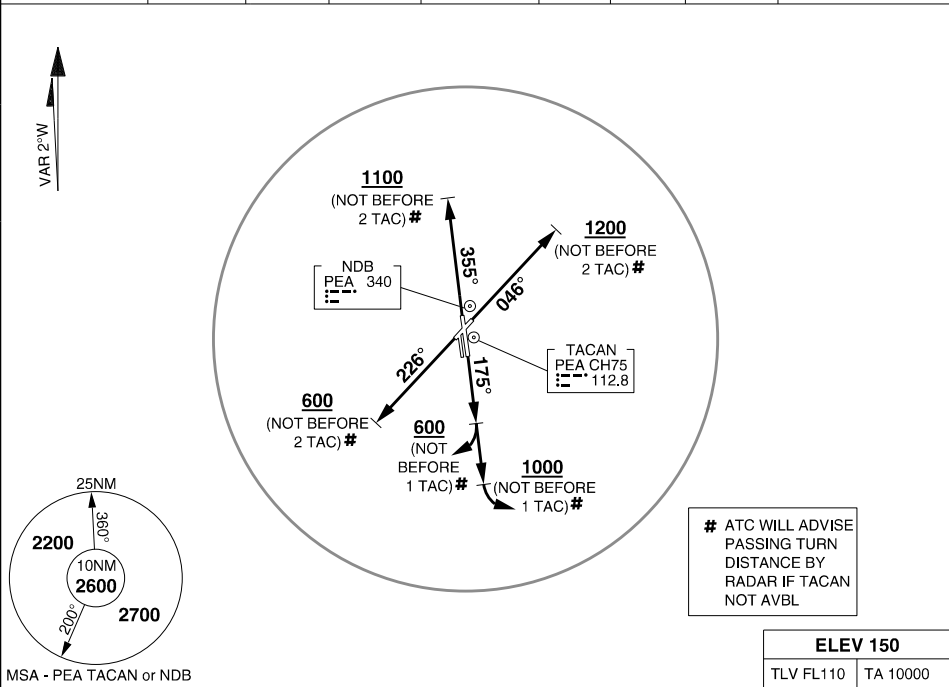


SID (RADAR) RWYS 05, 18L, 23 & 36R
MILITARY USE ONLY
PEARCE (YPEA)

ATIS	AWIS (AH)	ACD	SMC	TWR	APP	FIA (PH)	CTAF/AFRU	ELEVATIONS IN FEET AMSL BEARINGS ARE MAGNETIC
136.4 316.1 340	316.1	134.1	127.25	118.3 257.8	130.2	135.25	118.3	



MSA - PEA TACAN or NDB

PEARCE SIX TANGO DEPARTURE

RWY 05

- GRAD 7.9% TO 900FT THEN 3.3%
- TRACK 046°
- AT 1200FT BUT NOT BEFORE 2 TACAN # TURN TO ASSIGNED HDG OR TRACK

RWY 23

- GRAD 4.3% TO 1000FT THEN 3.3%
- TRACK 226°
- AT 600FT BUT NOT BEFORE 2 TACAN # TURN TO ASSIGNED HDG OR TRACK

RWY 18L EAST

- GRAD 4.8% TO 1200FT THEN 3.3%
- TRACK 175°
- AT 1000FT BUT NOT BEFORE 1 TACAN # TURN EAST TO ASSIGNED HDG OR TRACK

RWY 18L WEST

- GRAD 4.8% TO 600FT THEN 3.3%
 - TRACK 175°
 - AT 600FT BUT NOT BEFORE 1 TACAN # TURN WEST TO ASSIGNED HDG OR TRACK
- REQUIREMENT - EST IN TURN NO LATER THAN 2 TACAN TO AVOID PH CTA

RWY 36R

- GRAD 4.7% TO 1100FT THEN 3.3%
- TRACK 355°
- AT 1100FT BUT NOT BEFORE 2 TACAN # TURN TO ASSIGNED HDG OR TRACK

COMMUNICATIONS FAILURE PROCEDURE

ON RECOGNITION OF COMMUNICATIONS FAILURE:

- SQUAWK 7600
- MAINTAIN LAST ASSIGNED VECTOR FOR TWO MINUTES; AND
- CLIMB IF NECESSARY TO MINIMUM SAFE ALTITUDE TO MAINTAIN TERRAIN CLEARANCE; THEN
- PROCEED IN ACCORDANCE WITH THE LATEST ATC ROUTE CLEARANCE ACKNOWLEDGED

CHANGES: REINSTATED CHART, MAGVAR

19 MAR 26

AIS-AF
MILITARY USE ONLY

PEARCE (YPEA)
SID (RADAR) RWYS 05, 18L, 23 & 36R