

TACAN ESL Chan 18	APCH CRS 211°	RWY LDG THR ELEV AD ELEV	7995 14 23
----------------------	------------------	--------------------------------	------------------

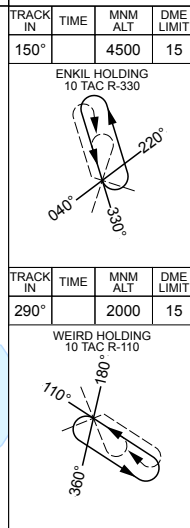
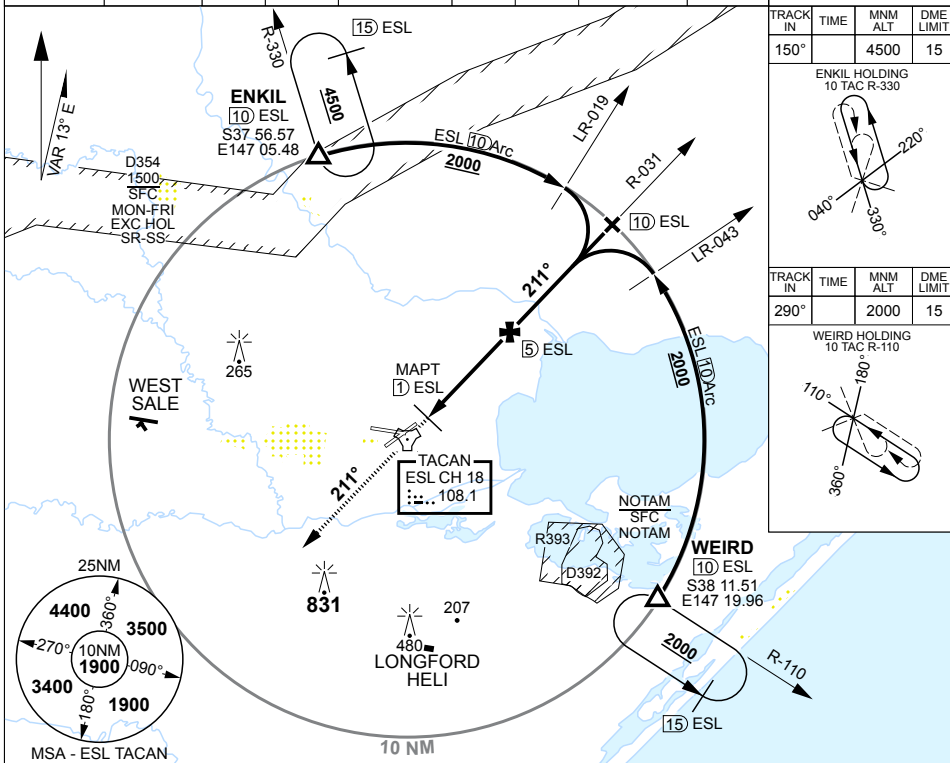
PANS-OPS, WGS-84

TACAN RWY 22 EAST SALE (YMES)

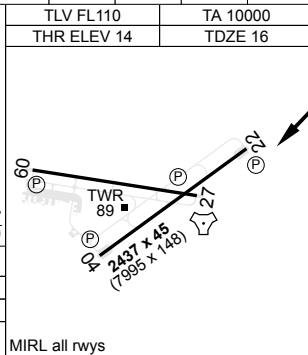
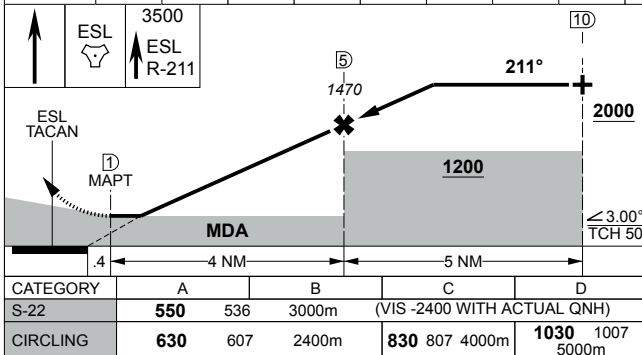
MISSED APPROACH:

TRACK DIRECT TO TACAN THEN R-211, CLIMB TO 3500FT OR AS DIRECTED BY ATC.

ATIS 125.4 350	AWIS (AH) 125.4	ACD 133.6 134.1	SMC 127.25	TWR 118.3 257.8	APP 123.3 340.2	ACC 135.8	CTAF/AFRU 118.3	FIA (ML) 124.0	ELEVATIONS IN FEET AMSL BEARINGS ARE MAGNETIC
-------------------	--------------------	-----------------------	---------------	--------------------	-----------------------	--------------	--------------------	-------------------	--



ESL TAC	2.1	3	4	5	6	6.7													
ALTITUDE	550	830	1150	1470	1790	2000													



CHANGES: SUA IDENT

S38 05.94 E147 08.97

09 JUL 26

AIS-AF
MILITARY USE ONLY

EAST SALE (YMES)
TACAN RWY 22