

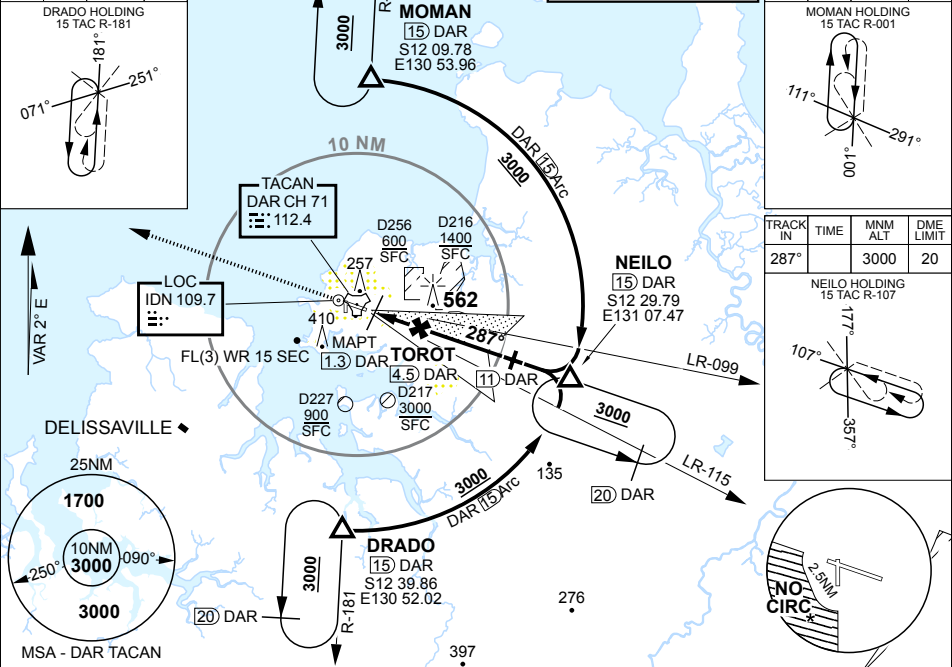
LOC IDN 109.7	APCH CRS 287°	RWY LDG THR ELEV AD ELEV	11,004 81 103
-------------------------	-------------------------	--------------------------------	--

ILS-Y OR LOC-Y RWY 29 (USING DAR TACAN CH71) PANS-OPS, WGS-84 **DARWIN INTL (YPDN)**

1. NO CIRCLING IN SECTOR SOUTH WEST OF RWYS 11/29 AND 18/36 BEYOND 2.5NM. 2. ACFT MAY BE RADAR VECTORED TO FINAL.	ALSF-1 	MISSED APPROACH: TRACK 287°. CLIMB TO 3000FT OR AS DIRECTED BY ATC.
--	------------	--

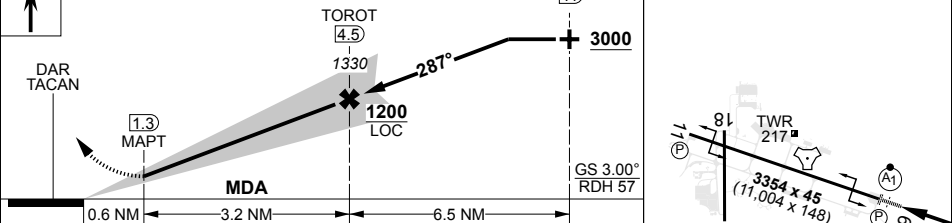
ATIS 128.25 316.2 308	ACD 126.8 237.3	SMC 121.8 265.3	TWR 133.1 257.8	APP E 125.2 305.5	APP W 134.1 363.8	DEP 123.0 325.4	ELEVATIONS IN FEET AMSL BEARINGS ARE MAGNETIC
---	---------------------------	---------------------------	---------------------------	-----------------------------	-----------------------------	---------------------------	--

TRACK IN 001°	TIME	MNM ALT 3000	DME LIMIT 20	GNSS PERMITTED IN LIEU OF DME REFERENCE WAYPOINT DAR TACAN	TRACK IN 181°	TIME	MNM ALT 3000	DME LIMIT 20
------------------	------	-----------------	-----------------	---	------------------	------	-----------------	-----------------

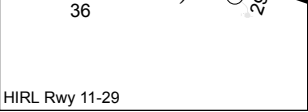


DAR TAC	2.3	3	4	5	6	7	8	9	9.7				
---------	-----	---	---	---	---	---	---	---	-----	--	--	--	--

ALTITUDE	650	860	1180	1490	1810	2130	2450	2770	3000				
----------	-----	-----	------	------	------	------	------	------	------	--	--	--	--



CATEGORY	A	B	C	D	E
S-ILS 29		400	319		800m
S-LOC 29	650	569	2200m		(VIS -1700 WITH ACTUAL QNH)
CIRCLING	790	687	2400m	900 797 4000m	1100 997 5000m 1420 1317 7000m



CHANGES: MAGVAR, FNA TR, MA TR, LEAD RDL, EDITORIAL S12 24.88 E130 52.61

09 JUL 26

DARWIN INTL (YPDN)

ILS-Y OR LOC-Y RWY 29 (USING DAR TACAN CH71)

AIS-AF: MILITARY USE ONLY