

TACAN DAR Chan 71	APCH CRS 104°	RWY LDG 11,004 THR ELEV 96 AD ELEV 103
----------------------	------------------	--

PANS-OPS, WGS-84

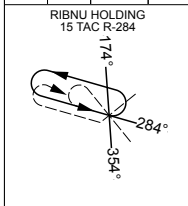
TACAN RWY 11 DARWIN INTL (YPDN)

1. NO CIRCLING IN SECTOR SOUTH WEST OF RWYS 11/29
AND 18/36 BEYOND 2.5NM.

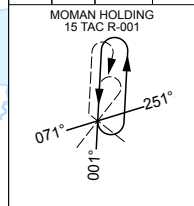
MISSED APPROACH:
TRACK DIRECT TO TACAN THEN R-104, CLIMB TO 3000FT OR
AS DIRECTED BY ATC.

ATIS 128.25 316.2 308	ACD 126.8 237.3	SMC 121.8 265.3	TWR 133.1 257.8	APP E 125.2 305.5	APP W 134.1 363.8	DEP 123.0 325.4	ELEVATIONS IN FEET AMSL BEARINGS ARE MAGNETIC
-----------------------------	--------------------	--------------------	--------------------	----------------------	----------------------	--------------------	--

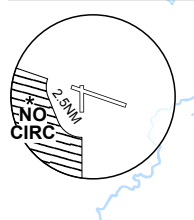
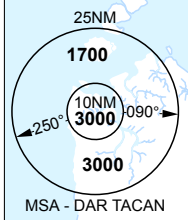
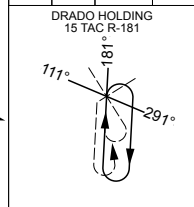
TRACK IN	TIME	MNM ALT	DME LIMIT
104°		3000	20



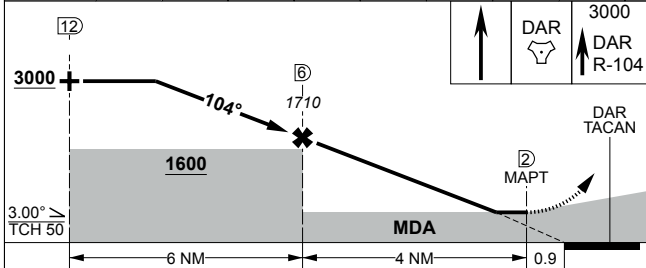
TRACK IN	TIME	MNM ALT	DME LIMIT
181°		3000	20



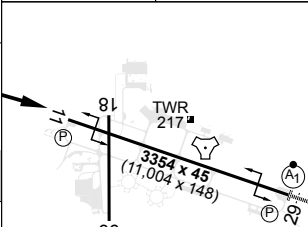
TRACK IN	TIME	MNM ALT	DME LIMIT
001°		3000	20



DAR TAC	10	9	8	7	6	5	4	3	2.4				
ALTITUDE	3000	2670	2350	2030	1710	1390	1070	760	580				



TLV FL110	TA 10000
THR ELEV 96	TDZE 101



CATEGORY	A	B	C	D	E
S-11	580		477	2600m	
CIRCLING	790	687	2400m	900 797 4000m	1100 997 5000m 1420 1317 7000m

CHANGES: MAGVAR S12 24.88 E130 52.61

09 JUL 26

AIS-AF
MILITARY USE ONLY

DARWIN INTL (YPDN) TACAN RWY 11