


TACAN DAR Chan 71	APCH CRS 290°	RWY LDG 11,004 THR ELEV 81 AD ELEV 103
----------------------	------------------	--

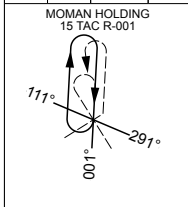
PANS-OPS, WGS-84

TACAN RWY 29 DARWIN INTL (YPDN)

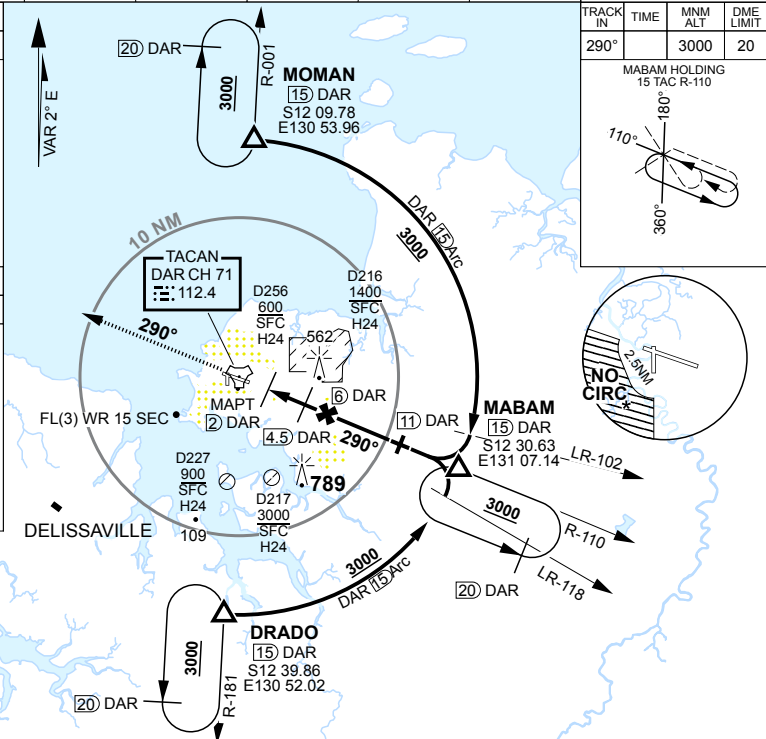
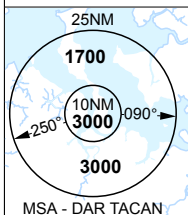
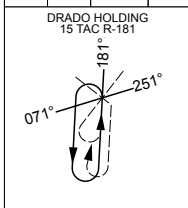
1. NO CIRCLING IN SECTOR SOUTH WEST OF RWYS 11/29 AND 18/36 BEYOND 2.5NM.	ALSF-1 	MISSED APPROACH: TRACK DIRECT TO TACAN THEN R-290, CLIMB TO 3000FT OR AS DIRECTED BY ATC.
---	---	--

ATIS 128.25 316.2 308	ACD 126.8 237.3	SMC 121.8 265.3	TWR 133.1 257.8	APP E 125.2 305.5	APP W 134.1 363.8	DEP 123.0 325.4	ELEVATIONS IN FEET AMSL BEARINGS ARE MAGNETIC
---	---------------------------	---------------------------	---------------------------	-----------------------------	-----------------------------	---------------------------	--

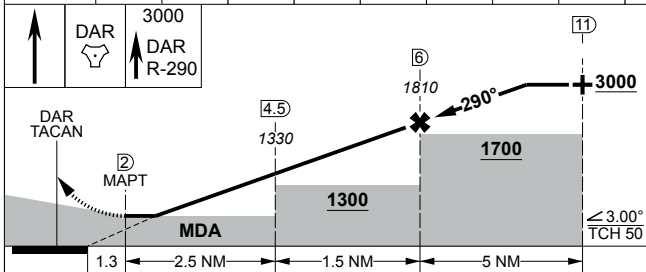
TRACK IN	TIME	MNM ALT	DME LIMIT
181°		3000	20



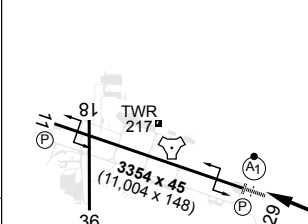
TRACK IN	TIME	MNM ALT	DME LIMIT
001°		3000	20



DAR TAC	2.3	3	4	5	6	7	8	9	9.7				
ALTITUDE	630	850	1170	1490	1810	2130	2440	2760	3000				



TLV FL110	TA 10000
THR ELEV 81	TDZE 90



CATEGORY	A	B	C	D	E
S-29	630	549	2200m	(VIS -1600 WITH ACTUAL QNH)	
CIRCLING	790	647	2400m	900 797 4000m	1100 997 5000m
				1420 1317 7000m	

CHANGES: MAGVAR

S12 24.88 E130 52.61

09 JUL 26

AIS-AF
MILITARY USE ONLY

DARWIN INTL (YPDN)
TACAN RWY 29