

**PANS-OPS, WGS-84**

**LOC-Z RWY 36R  
PEARCE (YPEA)**

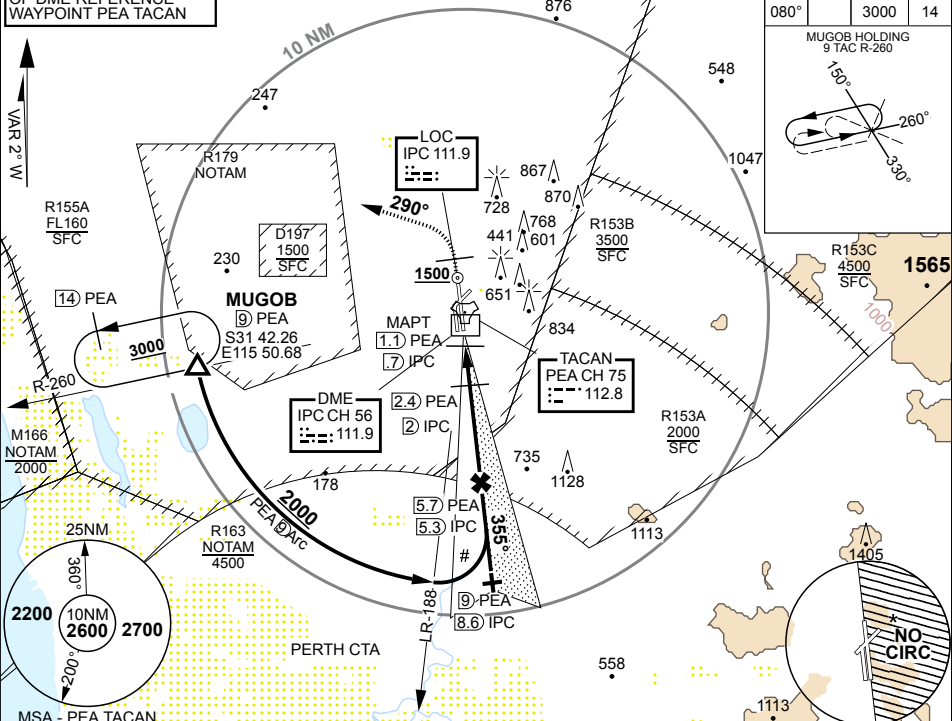
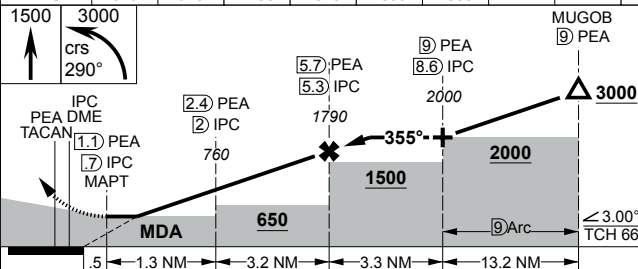
1. NO CIRCLING EAST OF RWY 18L/36R.
2. PROC NOT AVBL DRG CTAF HR UNLESS CLEARED BY PH APP.
- #3. MAX IAS IN TURN 210KT.

**MISSED APPROACH:**  
TRACK 355°, AT 1500FT TURN LEFT, TRACK 290°,  
CLIMB TO 3000FT.

ATIS	AWIS (AH)	ACD	SMC	TWR	APP	FIA (PH)	CTAF /AFRU	ELEVATIONS IN FEET AMSL BEARINGS ARE MAGNETIC
136.4 316.1 340	316.1	134.1	127.25	118.3 257.8	130.2	135.25	118.3	

GNSS PERMITTED IN LIEU  
OF DME REFERENCE  
WAYPOINT PEA TACAN

TRACK IN	TIME	MNM ALT	DME LIMIT
080°		3000	14

[illegible]

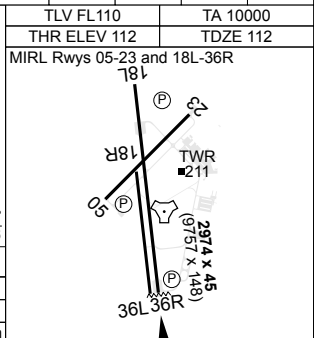
CATEGORY	A	B	C	D
S-LOC 36R	610 498	2700m	(VS -2100 WITH ACTUAL QNH)	
CIRCLING	730 580 2000m	880 730 2400m	980 830 4000m	1090 940 5000m

CHANGES: MINIMA, DIST-ALT TABLE

S31	40.06	E116	00.90
-----	-------	------	-------

09 JUL 26

**AIS-AF  
MILITARY USE ONLY**



**PEARCE (YPEA)**  
LOC-Z RWY 36R