

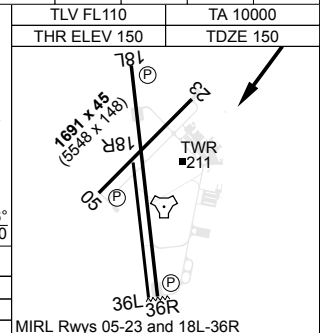


TACAN RWY 23 (2FTS USE ONLY)
PANS-OPS, WGS-84 **PEARCE (YPEA)**

MISSED APPROACH:
TRACK DIRECT TO TACAN THEN R-218, AT 1500FT TURN
RIGHT. TRACK 260°. CLIMB TO **4000FT**.

		TLV FL110	TA 10000
		THR ELEV 150	TDZE 150



CATEGORY	A	B	C	D
S-23	990	840	4800m	NA
CIRCLING	NOT AUTHORISED			

CHANGES: MSA, MAGVAR, GRADIENT	S31 40.06 E116 00.90
--------------------------------	----------------------

09 JUL 26

AIS-AF: MILITARY USE ONLY

E116 00.90	PEARCE (YPEA)
TACAN RWY 23 (2FTS USE ONLY)	