

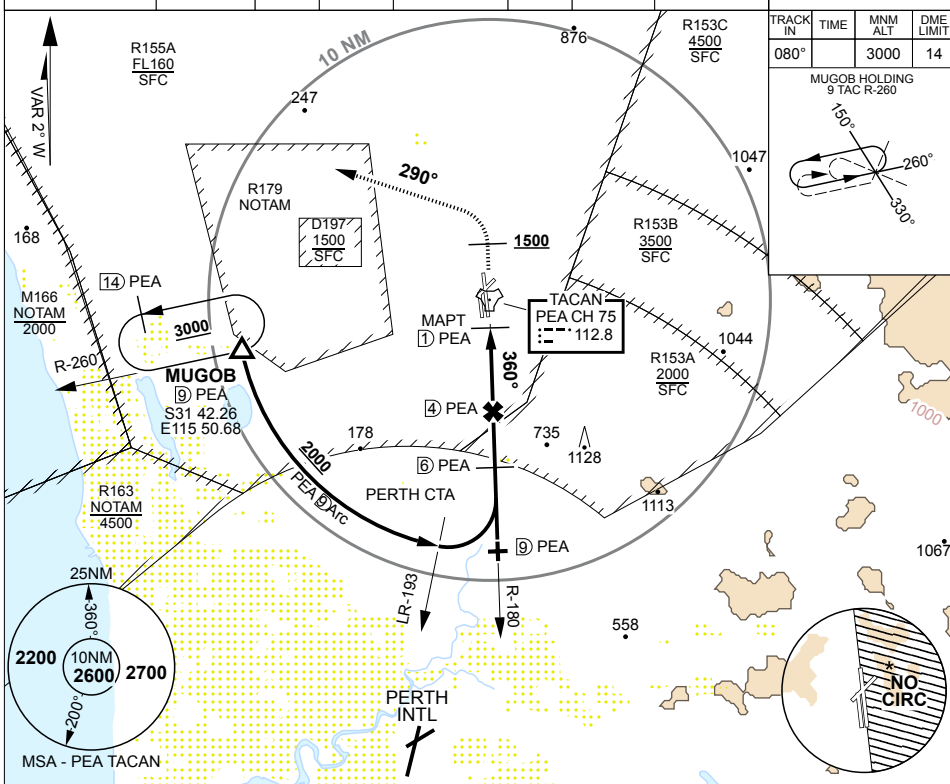
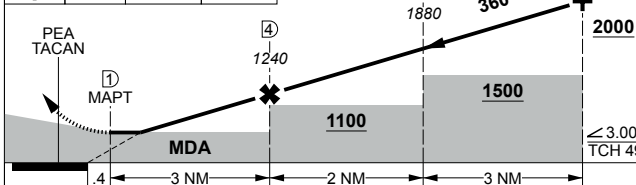
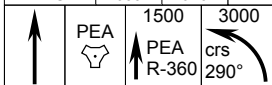
PANS-OPS, WGS-84

TACAN-Z RWY 36R
PEARCE (YPEA)

1. NO CIRCLING EAST OF RWY 18L/36R.
2. PROCEDURE NOT AVBL DRG CTAF HRS UNLESS CLEARED BY PERTH APPROACH.

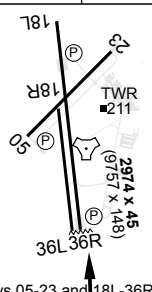
MISSED APPROACH:
TRACK DIRECT TO TACAN THEN R-360. AT 1500FT TURN LEFT,
TRACK 290°. CLIMB TO **3000FT**.

ATIS	AWIS (AH)	ACD	SMC	TWR	APP	FIA (PH)	CTAF /AFRU	ELEVATIONS IN FEET AMSL BEARINGS ARE MAGNETIC
136.4 316.1 340	316.1	134.1	127.25	118.3 257.8	130.2	135.25	118.3	

[illegible]

CATEGORY	A	B	C	D
S-36R	630 518	2900m	(VIS -2300 WITH ACTUAL QNH)	
CIRCLING	730 580 2000m	880 730 2400m	980 830 4000m	1090 940 5000m

TLV FL110	TA 10000
THR ELEV 112	TDZE 112



MIRL Rwy 05-23 and 18L-36R

CHANGES: MSA, MAGVAR, MINIMA, LEAD RADIAL S31 40.06 E116 00.90

09 JUL 26

AIS-AF
MILITARY USE ONLY

PEARCE (YPEA)
TACAN-Z RWY 36R