

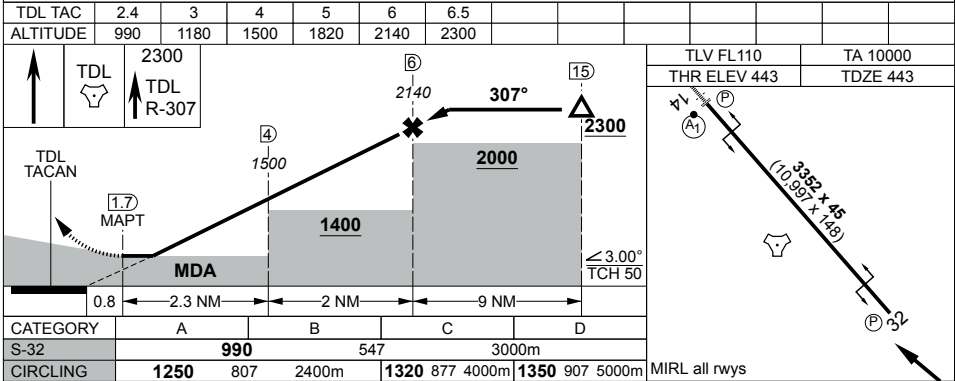
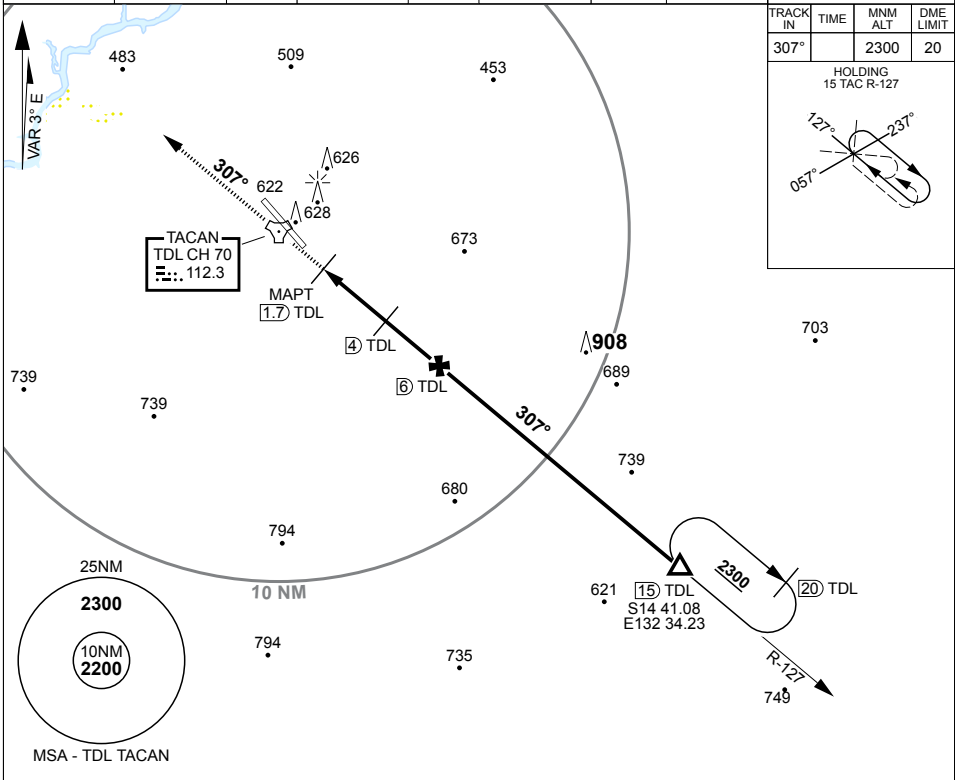
TACAN TDL Chan 70	APCH CRS 307°	RWY LGT 10,997 THR ELEV 443 AD ELEV 443
----------------------	------------------	--

PANS-OPS, WGS-84

TACAN RWY 32
TINDAL (YPTN)

						MISSED APPROACH: TRACK DIRECT TO TACAN THEN R-307, CLIMB TO 2300FT.	
--	--	--	--	--	--	--	--

ATIS 112.3 124.0 316.3	ACD 128.1 241.2	SMC 135.85 264.3	TWR 119.7 257.3	APP 120.95 261.4	TFC 125.8 254.7	FIA(BN) 122.6	CTAF/ AFRU/AFIS 119.7	ELEVATIONS IN FEET AMSL BEARINGS ARE MAGNETIC
------------------------------	--------------------	------------------------	--------------------	------------------------	--------------------	------------------	-----------------------------	--



CHANGES: RWY LGT, EDITORIAL

S14 31.26 E132 22.67

09 JUL 26

AIS-AF
MILITARY USE ONLY

TINDAL (YPTN)
TACAN RWY 32