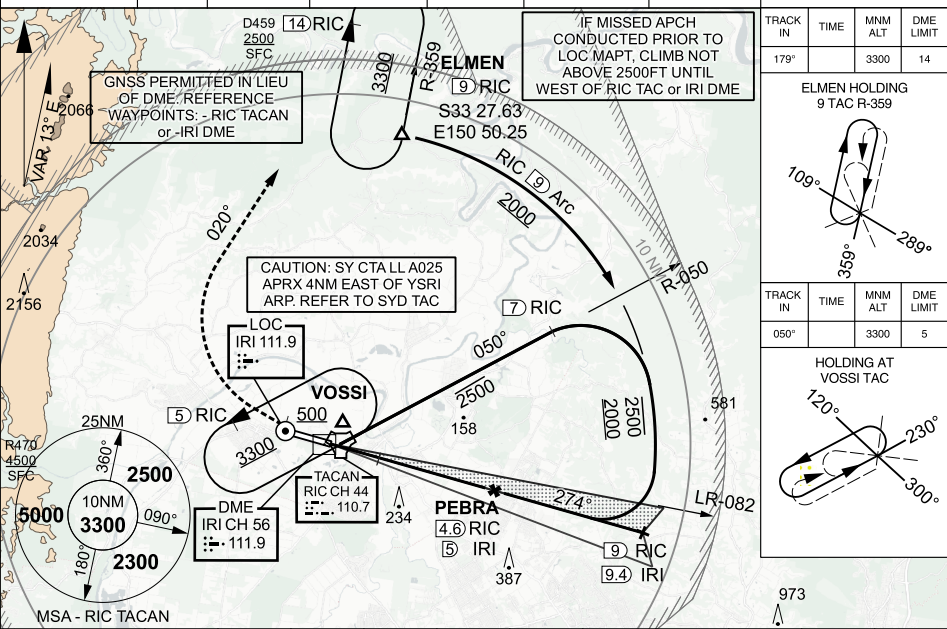


LOC/DME IRI 111.9 Chan 56	APCH CRS 274°	RWY LDG THR ELEV AD ELEV	7001 53 67
---	-------------------------	--------------------------------	------------------

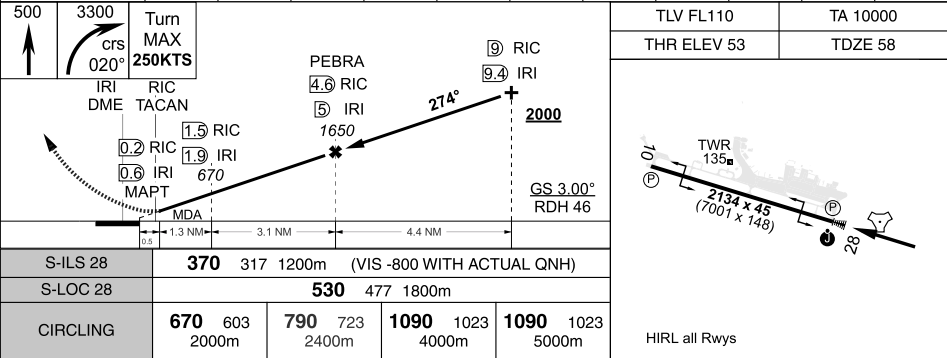
ILS-Y or LOC-Y RWY28 USING RIC TAC or IRI DME PANS-OPS, WGS 84 **RICHMOND (YSRI)**

<p>1. DURING INITIAL APCH THERE IS A POSSIBILITY OF CONFLICTION WITH ACFT OPR ON FIA FREQ CLOSE TO CTRCTAF BDRY.</p> <p>2. ACFT EQPT WITH GPWS MAY EXPERIENCE WARNINGS IF APCH FLOWN WITH HIGH INTERMEDIATE APCH SPEEDS.</p> <p>3. USE OF GP RESTRT TO WI 7° OF RWY CL.</p>	<p>MISSED APPROACH: TRACK R-274. AT 500FT TURN RIGHT, MAX IAS IN TURN 250KT. TRACK 020°. CLIMB TO 3300FT OR AS DIRECTED BY ATC.</p>
---	--

ATIS/AWIS (AH)	SMC	TWR	APP (SY)	FIA (SY)	AFRU/PAL (AH)	CTAF / AFRU (AH)	ELEVATIONS IN FEET AMSL BEARINGS ARE MAGNETIC
126.3 274.55	128.25	135.5 257.3	135.9 363.8	124.55	135.5	135.5	



RIC TAC	1.1	2	3	4	5	6	7	7.3			
IRI DME	1.5	2.5	3.5	4.5	5.5	6.5	7.5	7.7			
ALTITUDE	530	830	1150	1460	1780	2100	2420	2500			



CHANGES: NEW PROCEDURE S33 36.04 E150 46.84

09 JUL 26 **RICHMOND (YSRI)** ILS-Y or LOC-Y RWY28 USING RIC TAC or IRI DME