

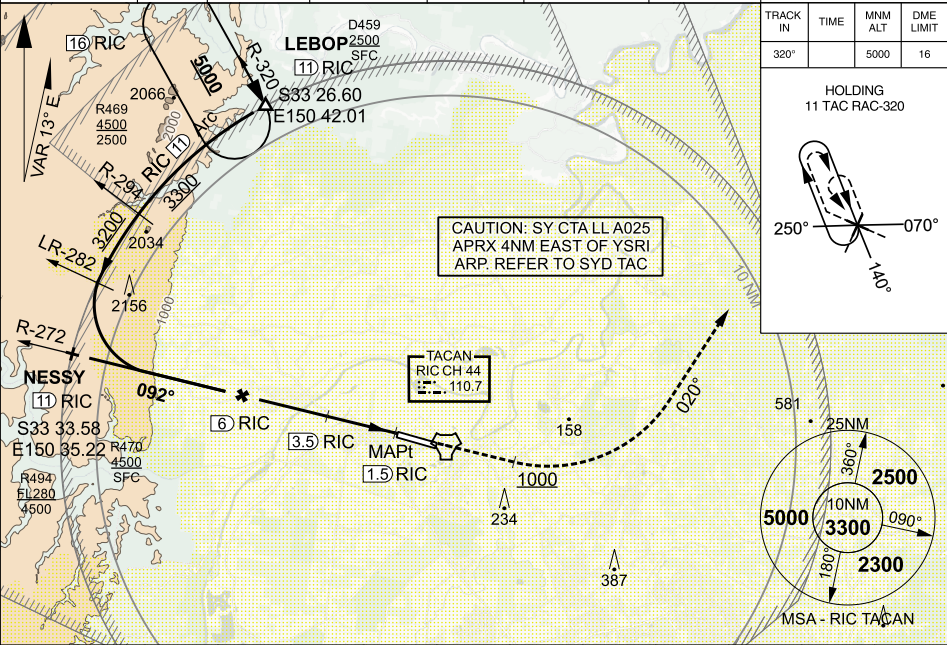
TACAN RIC Chan 44	APCH CRS 092°	RWY LDG THR ELEV AD ELEV	7001 67 67
-----------------------------	-------------------------	--------------------------------	------------------

PANS-OPS, WGS 84

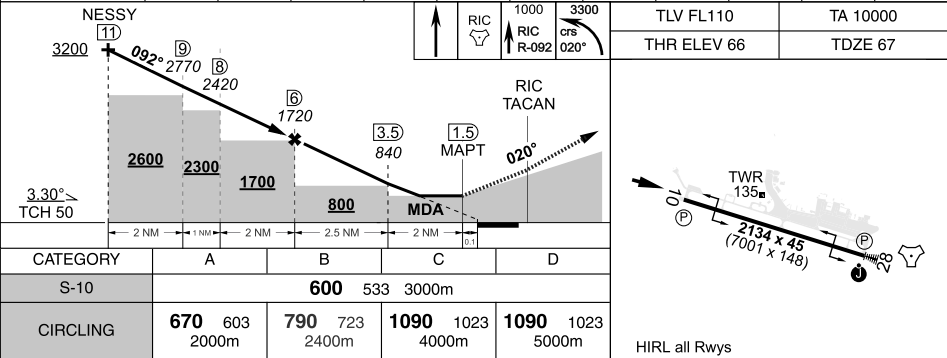
TACAN RWY 10 RICHMOND (YSRI)

1. FNA GRADIENT FAF - THR RWY 10 = 5.7% (3.3° OR 346 FT/NM) 2. DURING CTAF HRS ENSURE AN AWY CLR TO RE-ENTER CTA IS REC PRIOR TO COMMENCING THIS APPROACH. 3. ACFT EQPT WITH GPWS MAY EXPERIENCE WARNINGS IF APCH FLOWN WITH HIGH INTERMEDIATE APCH SPEEDS.	MISSED APPROACH: TRACK DIRECT TO TACAN THEN R-092. AT 1000FT TURN LEFT, TRACK 020°. CLIMB TO 3300FT OR AS DIRECTED BY ATC.
---	--

ATIS/AWIS (AH)	SMC	TWR	APP (SY)	FIA (SY)	AFRU/PAL (AH)	CTAF / AFRU (AH)	ELEVATIONS IN FEET AMSL BEARINGS ARE MAGNETIC
126.3 274.55	128.25	135.5 257.3	135.9 363.8	124.55	135.5	135.5	



RIC TAC	11	10	9	8	7	6	5	4	3	2.8	
ALTITUDE	3470	3120	2770	2420	2070	1720	1370	1020	670	600	



CHANGES: NEW PROCEDURE

S33 36.04 E150 46.84

09 JUL 26

**AIS-AF
MILITARY USE ONLY**

**RICHMOND (YSRI)
TACAN RWY 10**