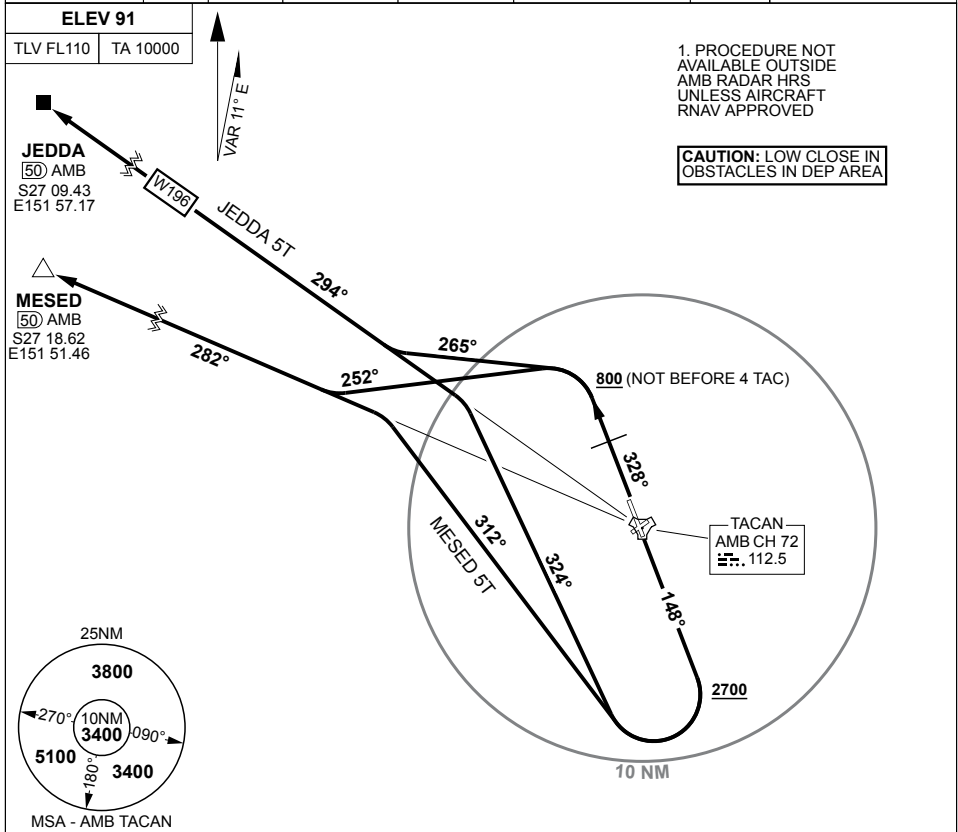


# SID NORTH WEST AMBERLEY (YAMB)

PANS-OPS, WGS 84

ATIS/AWIS (AH) <b>123.3 316.2</b>	ACD <b>134.6</b>	SMC <b>129.35</b>	TWR <b>118.3 264.6</b>	APP <b>126.2 335.8</b>	AFRU(AH)/PAL/CTAF <b>118.3</b>	FIA(BN) <b>121.2</b>	ELEVATIONS IN FEET AMSL BEARINGS ARE MAGNETIC
--------------------------------------	---------------------	----------------------	---------------------------	---------------------------	-----------------------------------	-------------------------	--



## JEDDA FIVE TANGO

### RWY 15

GRAD 4.3% TO 2700FT THEN 3.3%, TRACK 148°, AT 2700FT, BUT NOT BEFORE DER, TURN RIGHT, TRACK 324° TO INTCP OUTBOUND TRACK

### RWY 33

GRAD 3.9% TO 800FT THEN 3.3%, TRACK 328°, AT OR ABV 800FT, BUT NOT BEFORE 4 TAC, TURN LEFT, TRACK 265° TO INTCP, OUTBOUND TRACK

## MESED FIVE TANGO

### RWY 15

GRAD 4.3% TO 2700FT THEN 3.3%, TRACK 148°, AT 2700FT, BUT NOT BEFORE DER, TURN RIGHT, TRACK 312° TO INTCP OUTBOUND TRACK

### RWY 33

GRAD 3.9% TO 800FT THEN 3.3%, TRACK 328°, AT OR ABV 800FT, BUT NOT BEFORE 4 TAC, TURN LEFT, TRACK 252° TO INTCP OUTBOUND TRACK

CHANGES: CAUTION NOTE

S27 38.44 E152 42.71

**19 MAR 26**

**AIS-AF  
MILITARY USE ONLY**

**AMBERLEY (YAMB)  
SID NORTH WEST**