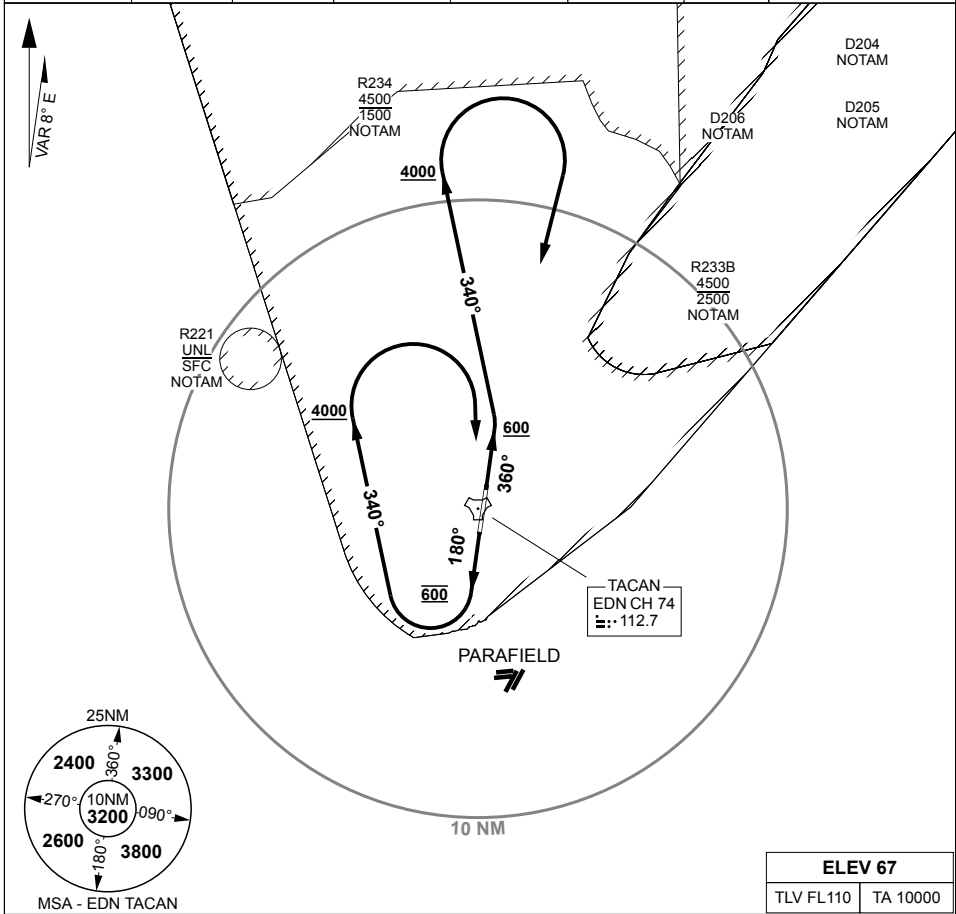


PANS-OPS, WGS 84

SID RWY 18/36
EDINBURGH (YPED)

ATIS	AWIS (AH)	SMC /ACD	TWR	APP (AD)	CTAF /AFRU	FIA (AD)	ELEVATIONS IN FEET AMSL BEARINGS ARE MAGNETIC
126.25 316.3	316.3	134.1	118.3 257.8	128.6 306.3	118.3	130.45	



ALL DEPARTURES

DRG CTAF HR, ENSURE AWY CLR AND CONTROLLED AIRSPACE ENTRY INSTRUCTIONS ARE RECEIVED PRIOR TO RWY ENTRY, CONTACT ADELAIDE APP ON LEAVING 1500FT, EXPECT RADAR VECTORS AFTER LEAVING 3000FT

NORTH TWO

RWY 18

PROCEDURE NOT AVAILABLE WHEN R221 ACTIVE, GRAD 3.3%, TRACK 180°, AT 600FT BUT NOT BEFORE DER, TURN RIGHT, TRACK 340°, AT 4000FT TURN RIGHT, TRACK DIRECT TO EDN TACAN, INTERCEPT CLEARED ROUTE

CAUTION: PARAFIELD CTR 3NM SOUTH OF AD

RWY 36

GRAD 3.3%, TRACK 360°, AT OR ABV 600FT BUT NOT BEFORE DER, TURN LEFT, TRACK 340°, AT 4000FT TURN RIGHT, TRACK DIRECT TO EDN TACAN, INTERCEPT CLEARED ROUTE

CHANGES: REMOVE WPT DOLVU

S34 42.15 E138 37.25

12 JUN 25

AIS-AF
MILITARY USE ONLY

EDINBURGH (YPED)
SID RWY 18/36