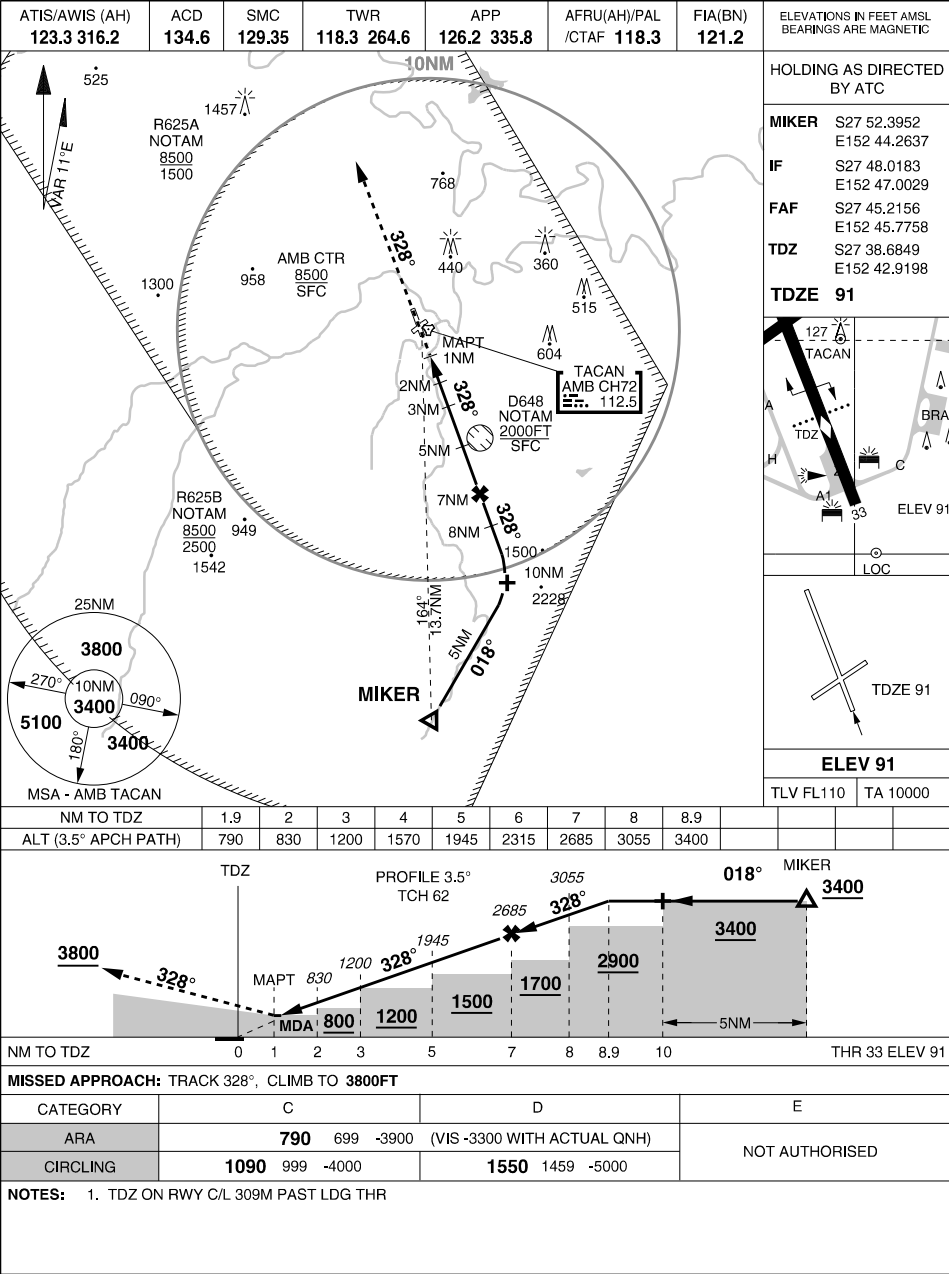


MILITARY USE ONLY

S27 38.44 E152 42.71
PANS-OPS, WGS 84, AATCP-1

ARA RWY 33
AMBERLEY (YAMB)



CHANGES: CIRCLING RESTRICTION REMOVED, EDITORIAL

19 MAR 26

AIS-AF
MILITARY USE ONLY

AMBERLEY (YAMB)
ARA RWY 33