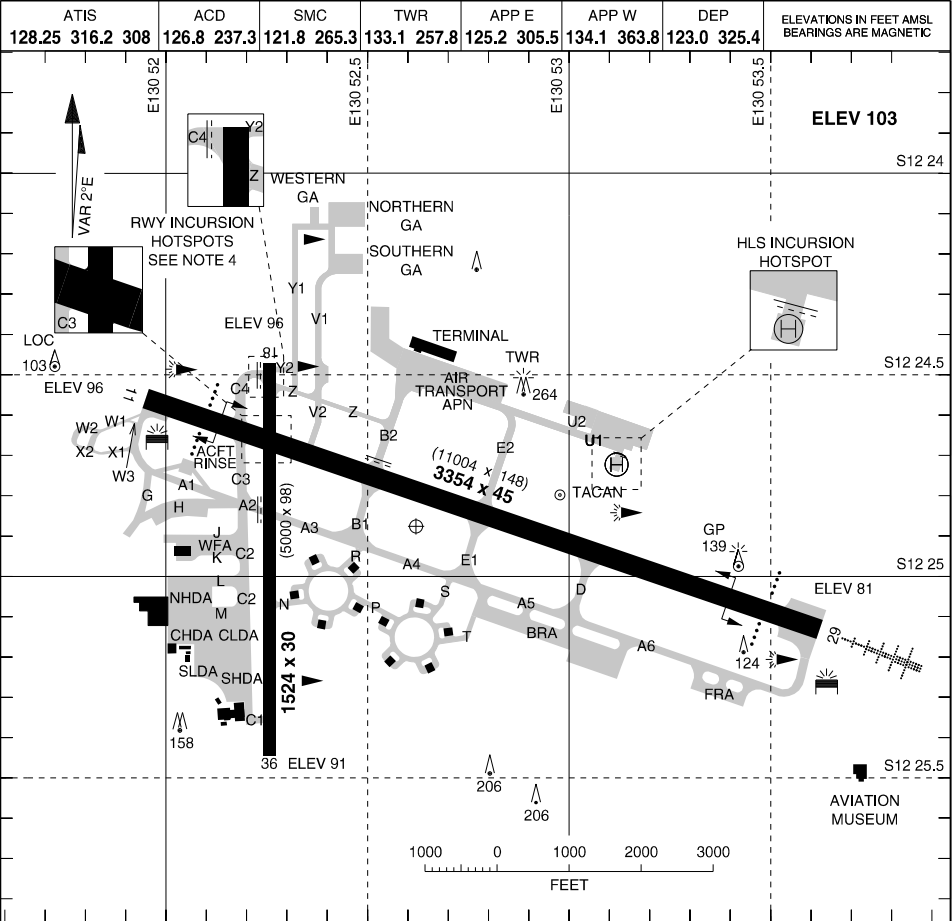


MILITARY USE ONLY

S12 24.88 E130 52.61
PANS-OPS, WGS 84

AERODROME CHART
DARWIN INTL (YPDN)



LIGHTING				NOTES
RWY	APPROACH	THR	RUNWAY	
11 (107°)	PAPI 3.00° 65FT	GREEN	HIRL (6)	
29 (287°)	HIAL (6) PAPI 3.00° 60FT	GREEN		
18 (177°)	NIL	NIL	NIL	
36 (357°)				
OBSTRUCTION ILLUMINATED WIND INDICATOR TWY: CL GREEN AIR TRANSPORT APN: TWY BLUE EDGE LGT S OF BAYS 2, 3 AND 21, 22 TWYS C4, V2, Y & Z (WEST OF V) ARE UNLIT NORTHERN HELIPAD: ILLUMINATED BY WHITE LIGHTS NORTHERN HELIPAD TWY: GREEN CL LIGHTS				

1. RWY LIGHTS POSITIONED 3FT FROM EDGE.
2. LDA FOR LAHSO: FM THR RWY 29 TO RWS EDGE 18 / 36 - 2687M FM THR RWY 36 TO RWS EDGE 11 / 29 - 1146M.
3. CIRCLING TO RWY 11 / 29 NOT APPROVED UNLESS RWY LIGHTS ARE AT STAGE 2 OR HIGHER
4. CAUTION: RWY INCURSION HOTSPOTS: RWY 18 / 36 AND TWY C4 INTERSECTION OF RWY 11 / 29 AND 18 / 36 ACFT MUST NOT VACATE/ENTER ONTO THE CROSSING RWY WITHOUT ATC APPROVAL.
5. ROBERTSON BARRACKS (YRBK) CTAF 126.6, H24

CHANGES: MAGVAR, RWY 11/29 HDG

09 JUL 26

AIS-AF
MILITARY USE ONLY

DARWIN INTL (YPDN)
AERODROME CHART