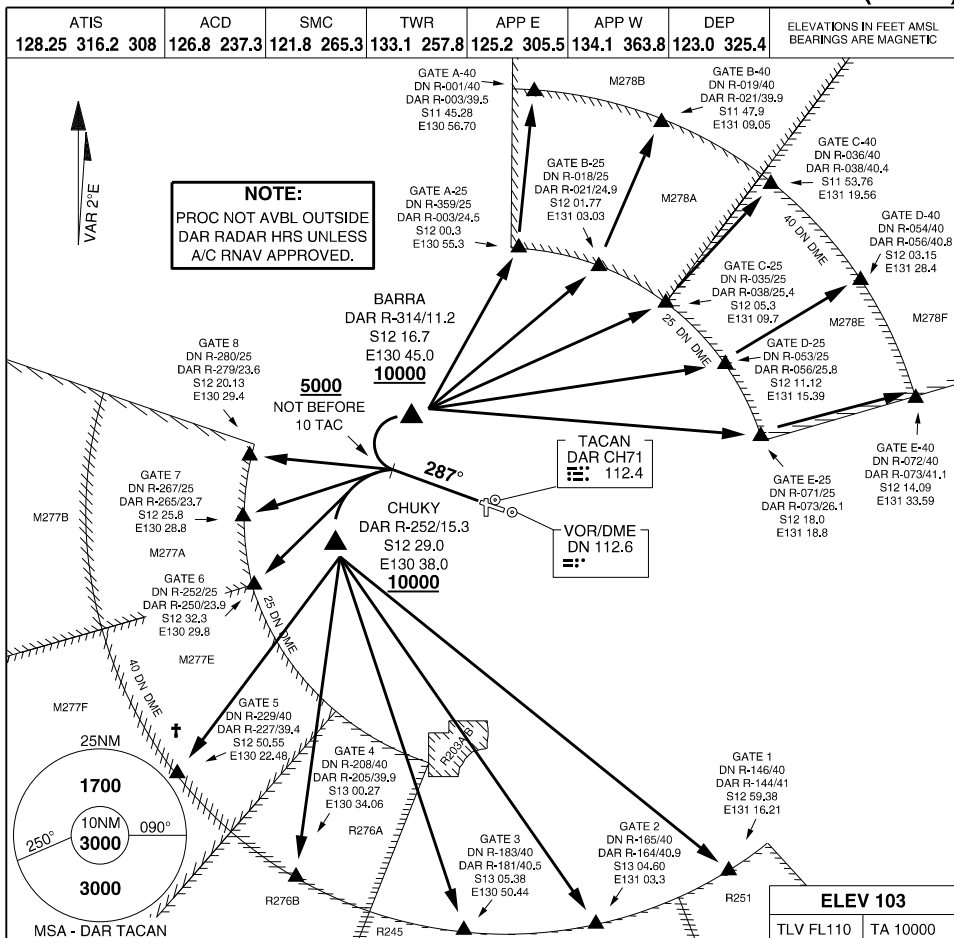


S12 24.88 E130 52.61
PANS-OPS, WGS 84

SID RWY 29 (FAST JET ONLY)
MILITARY USE ONLY
DARWIN INTL (YPDN)



SPECIAL REQUIREMENT

- †
- AIRCRAFT TRACKING VIA GATE 5 ARE TO REACH FL210 BY 37 TAC DAR / 37.7 DME DN IF UNABLE TO COMPLY, ADVISE ATC
 - INITIAL CLIMB AT 3.3% BEFORE TURN IS PANSOPS COMPLIANT TO 3000 AND OR 10 TAC. THIS IS MIL FAST JET ONLY HIGHER CG AND BANK MAY BE REQUIRED TO MEET NOMINAL TRACK AND WPT REQUIREMENTS.

RWY 29
TURTL THREE DEPARTURE

CHUKY (GATES 1-5)

- GRAD 3.3%
- TRACK 287°
- AT OR ABV 5000FT, BUT NOT BFR 10 TAC, TURN LEFT
- TRACK TO CHUKY
- REACH 10000FT BY CHUKY
- TRACK TO CLEARED GATE
- GATE 5 REACH FL210 BY 37 TAC

BARRA (GATES A-E)

- GRAD 3.3%
- TRACK 287°
- AT OR ABV 5000FT, BUT NOT BFR 10 TAC, TURN RIGHT
- TRACK TO BARRA, REACH 10000FT BY BARRA
- TRACK TO CLEARED GATE (DIRECT TO A-40 TO E-40 ON ATC DISCRETION ONLY)

DIRECT (GATES 6,7,8)

- GRAD 3.3%
- TRACK 287°
- AT OR ABV 5000FT, BUT NOT BFR 10 TAC
- TURN LEFT, TRACK TO CLEARED GATE

CHANGES: REVISED PROC

09 JUL 26

MILITARY USE ONLY

AIS-AF

DARWIN INTL (YPDN)

SID RWY 29 (FAST JET ONLY)