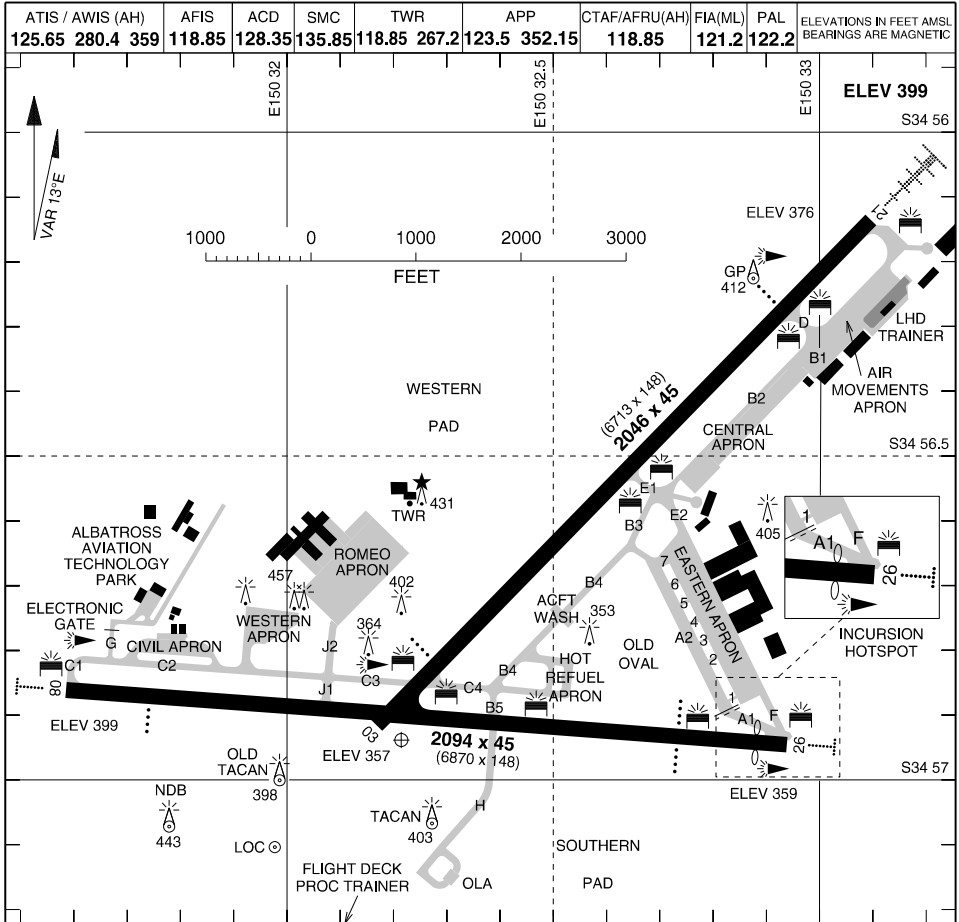


MILITARY USE ONLY

AERODROME CHART NOWRA (YSNW)

S34 56.94 E150 32.22
PANS-OPS, WGS 84



LIGHTING				NOTES
RWY	APPROACH	THR	RUNWAY	
03 (032°)	PAPI (6) (LEFT SIDE) 3.00° 52FT	GREEN /RED	HIRL (6) PAL 122.2 PTBL 30 MIN PN	
21 (212°)	HIAL (6) (724M) PAPI (6) (RIGHT SIDE) 3.00° 51FT ALIGNED WITH ILS GP			
08 (082°)	SALS (3) PAPI (6) (RIGHT SIDE) 3.00° 57FT			
26 (262°)	SALS (6) PAPI (6) (BOTH SIDES) 3.00° 52FT	GREEN/RED DISP 299FT		
AERODROME BEACON ALT WG 10 SEC TAXIWAY: GREEN CENTRELINE, TWY G ACT BY PAL +AA 120.45 EMERGENCY: SDBY PWR AVBL (15 SEC DLA) PAL FAILURE CTC RFFS ON CTAF FREQ (10 MIN DLA)				

1. RWYS 08 AND 21 - RIGHT CIRCUIT
2. RWY 26 THR DISPLACED 91M (299FT).
3. RWY 03/21 PARTIALLY GROOVED
4. RISING TERRAIN APP RWY 08/ TKOF RWY 26 MARKED BY BI-DIRECTIONAL RED LGT

CAUTION
SEVERE DOWNDRAFTS WITHIN 1NM OF THR ON APCH TO RWY 26 WHEN WIND ABV 7KT FROM WEST
TRANSITIONAL SFC AT E END RWY 08/26 MAY BE INFRINGED BY TRANSIENT VEHICLES

CHANGES: NOTES

09 JUL 26

AIS-AF
MILITARY USE ONLY

NOWRA (YSNW)
AERODROME CHART