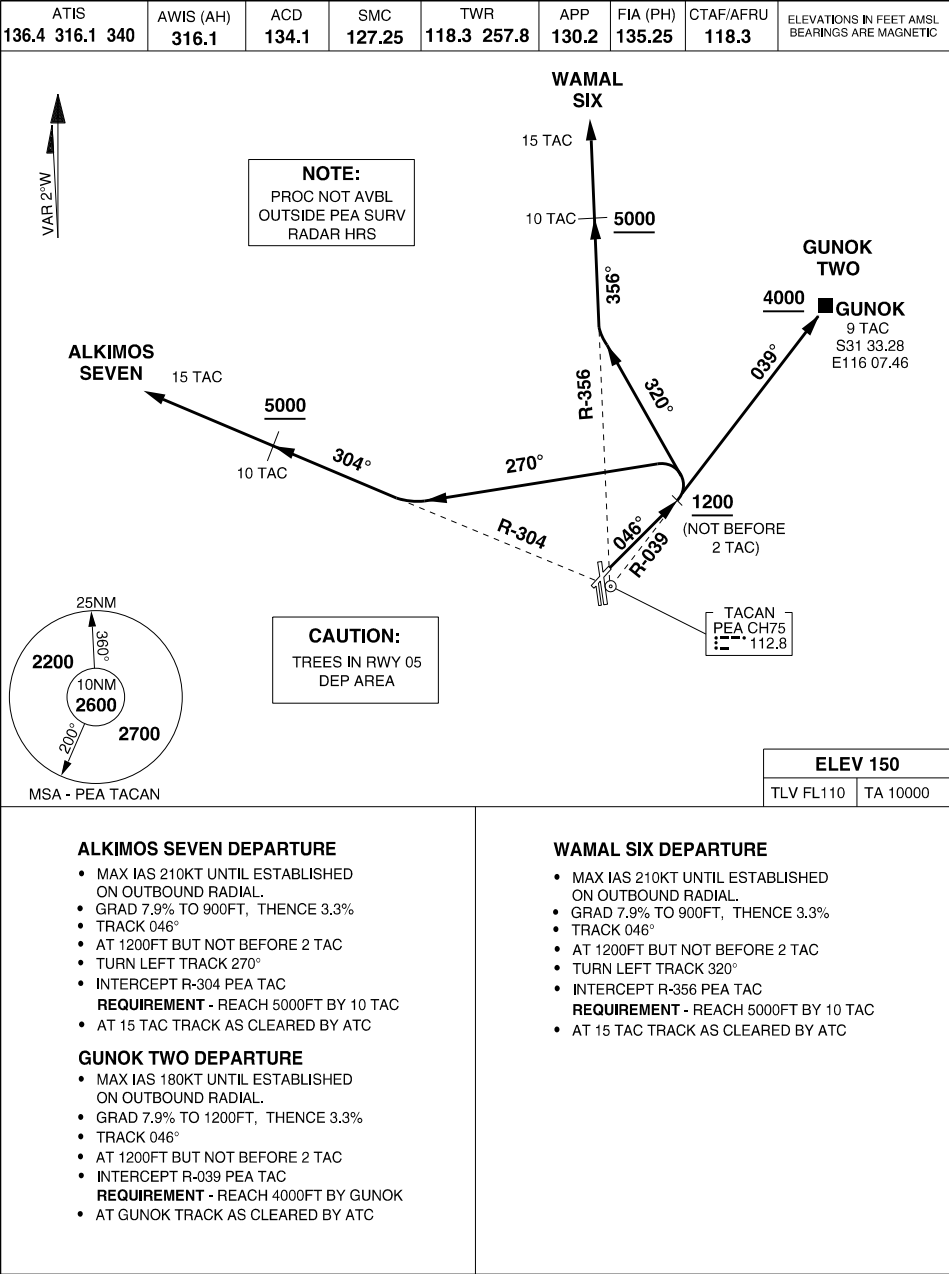


MILITARY USE ONLY

S31 40.06 E116 00.90  
PANS-OPS, WGS 84

SID RWY 05 (CAT A, B, C)  
PEARCE (YPEA)



CHANGES: MAGVAR, CAUTION NOTE

09 JUL 26

AIS-AF  
MILITARY USE ONLY

PEARCE (YPEA)  
SID RWY 05 (CAT A, B, C)