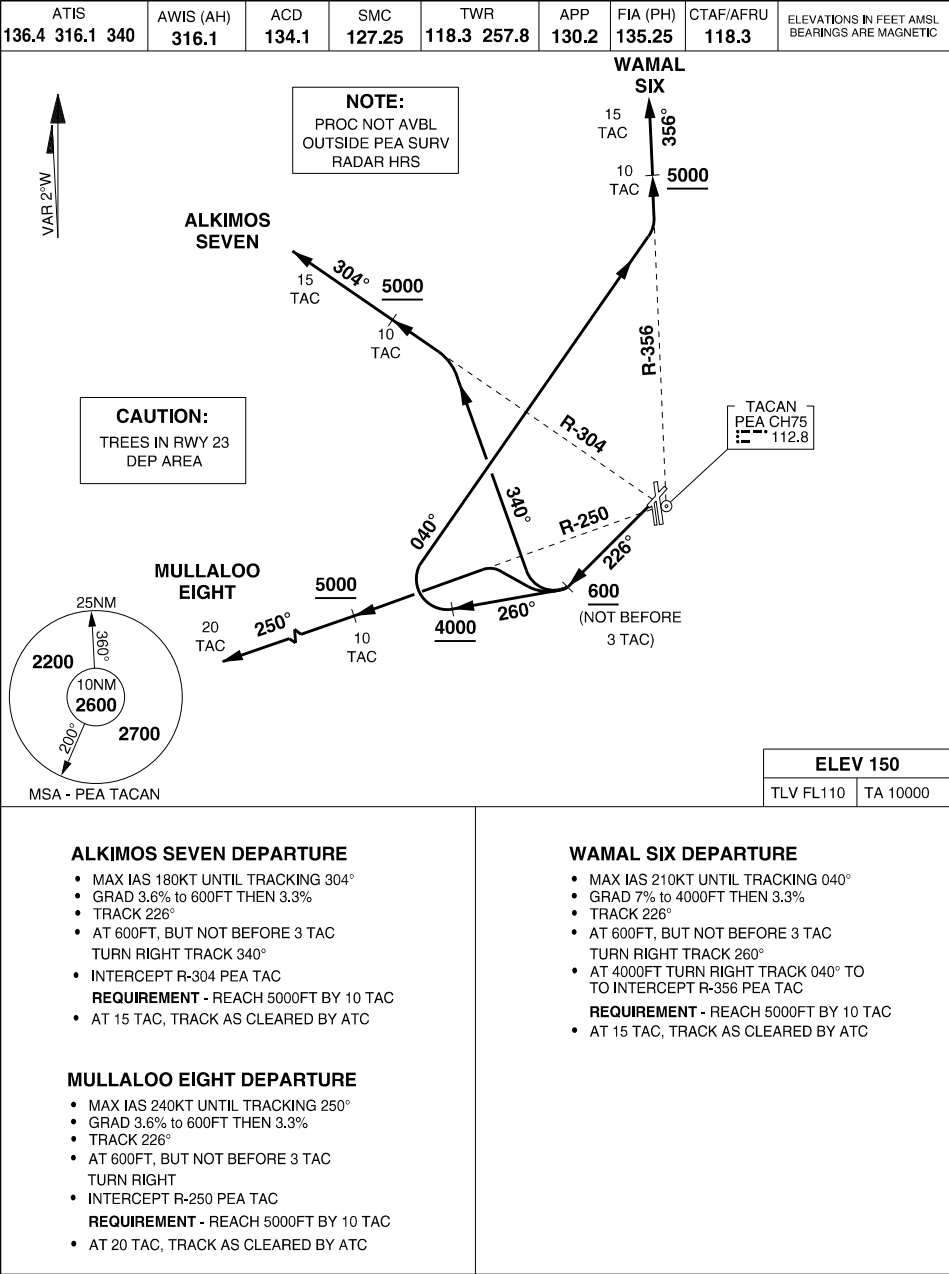


MILITARY USE ONLY

SID RWY 23 (CAT A, B, C)
PEARCE (YPEA)

S31 40.06 E116 00.90
PANS-OPS, WGS 84



CHANGES: MAGVAR

09 JUL 26

AIS-AF
MILITARY USE ONLY

PEARCE (YPEA)
SID RWY 23 (CAT A, B, C)